

Ring Lights

LKR series

Refer to our website for product details.

CCS LKR

Search



You can also use your smartphone or cell phone.

Use a search engine.

Provides diffused light from an angled emitting surface

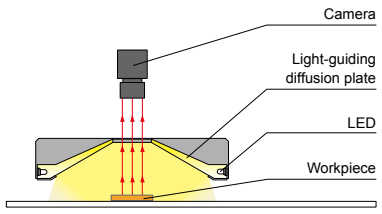


Applications Soldering inspection, parts identification with color, inspection for stains on glossy surfaces, character recognition on metal parts, and dent inspection on metal parts, etc.

Characteristics

LEDs embedded around a circular light-guiding diffusion plate. Uniformly diffused light from an emitting surface angled with respect to the workpiece.

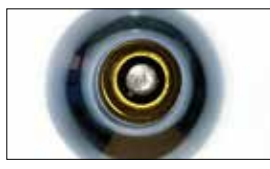
Example configuration (LKR-125)



We accept custom orders. Please feel free to inquire.

- Change to format
- Increase brightness
- Change to wavelength, etc.

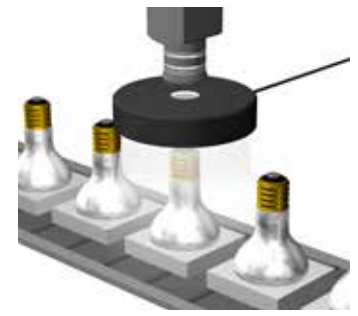
Imaging example: Imaging of soldering at the cap of a light bulb



Workpiece: Light bulb



It is difficult to evenly illuminate the whole solder.



It is possible to evenly illuminate the whole solder, including the cap.

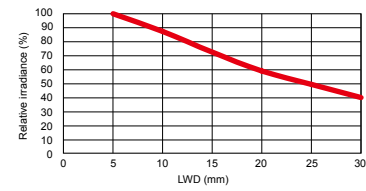
Data: Relative irradiance graph/Uniformity graph (Representative example)

* The graph included is for reference only and does not guarantee the quality of this product.

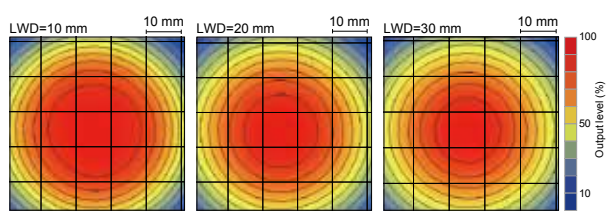
LKR-70RD2

Relative irradiance graph (LWD Characteristics)^{*1}

*1: Irradiance on the optical axis
*2: Illuminating distance from the Light Unit to the workpiece



Uniformity graph (Relative irradiance)



LDR2	Direct Lighting
LDR2-LA	Direct Lighting
LDR-LA1	Direct Lighting
SQR	Direct Lighting
SQR-TP	Direct Lighting
HLDR-IP	Convergent Lighting
HPR2	Diffused Lighting
HPR	Diffused Lighting
LFR	Diffused Lighting
LKR	Diffused Lighting
FPR	Diffused Lighting
FPQ2	Direct Lighting
LDL2	Direct Lighting
LDLB	Direct Lighting
HLDL2	Direct Lighting
TH	Diffused Lighting
LFL	Diffused Lighting
HPD2	Diffused Lighting
HPD	Diffused Lighting
LDM2	Diffused Lighting
LAV	Diffused Lighting
PDM	Diffused Lighting
LFX2	Diffused Lighting
LFX3	Diffused Lighting
LFV2	Diffused Lighting
MSU	Collimated Lighting
MFU	Collimated Lighting
UV2	Ultraviolet Lighting
UV	Ultraviolet Lighting
LNSP-UV-FN	Ultraviolet Lighting
IR2	Infrared Lighting
HLV2	Spot Lighting, Etc.
LV	Spot Lighting, Etc.
LSP	Spot Lighting, Etc.
HFS/HFR	Spot Lighting, Etc.
HLV2-NR	Spot Lighting, Etc.
HLV2-3M-RGB-3W	Spot Lighting, Etc.
PFB2	Spot Lighting, Etc.
PFBR	Spot Lighting, Etc.
LNSP	Convergent Lighting
CU-LNSP	Convergent Lighting
LNSP-FN	Convergent Lighting
LN/LN-HK	Convergent Lighting
LNSD	Diffused Lighting
LND2	Diffused Lighting
HLND	Diffused Lighting
LT	Diffused Lighting
LNW/HLDN	Diffused Lighting
LNIS	Oblique Angled Lighting
LNIS-FN	Oblique Angled Lighting
Telecentric Lens	Lenses
Macro Lens	Lenses

We have various materials.

- PDF Drawings
- DXF Drawings
- 3D CAD
- Instruction Guides
- Product Filers
- Imaging Samples
- Data Sheets
- Examples of Custom Ordered Products

Download here. <http://www.ccs-grp.com/dl/>

Lineup

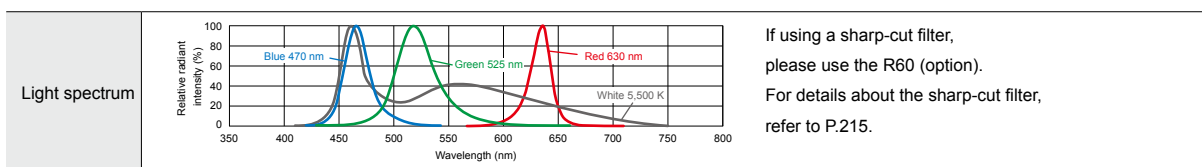
Model name	LED color	Power consumption	Peak wavelength/ correlated color temperature	Options	Recommended Control Units	Weight				
LKR-70RD2	Red	24 V / 2.6 W	630 nm	-	<table border="1"> <tr> <td>PD3</td> <td>CC-ST-1024</td> </tr> <tr> <td>PSB</td> <td>PTU2</td> </tr> </table>	PD3	CC-ST-1024	PSB	PTU2	125 g
PD3	CC-ST-1024									
PSB	PTU2									
LKR-70SW2	White	24 V / 3.8 W	5,500 K			130 g				
LKR-70BL2	Blue		470 nm	125 g						
LKR-70GR2	Green		525 nm	125 g						
LKR-70-8RD2	Red	24 V / 2.6 W	630 nm	-	<table border="1"> <tr> <td>PD3</td> <td>CC-ST-1024</td> </tr> <tr> <td>PSB</td> <td>PTU2</td> </tr> </table>	PD3	CC-ST-1024	PSB	PTU2	140 g
PD3	CC-ST-1024									
PSB	PTU2									
LKR-70-8SW2	White	24 V / 3.8 W	5,500 K			140 g				
LKR-70-8BL2	Blue		470 nm	140 g						
LKR-70-8GR2	Green		525 nm	140 g						
LKR-125RD2	Red	24 V / 4.6 W	630 nm	-	<table border="1"> <tr> <td>PD3</td> <td>CC-ST-1024</td> </tr> <tr> <td>PSB</td> <td>PTU2</td> </tr> </table>	PD3	CC-ST-1024	PSB	PTU2	295 g
PD3	CC-ST-1024									
PSB	PTU2									
LKR-125SW2	White	24 V / 5.7 W	5,500 K			300 g				
LKR-125BL2	Blue		470 nm	490 g						
LKR-125GR2	Green		525 nm	490 g						

Extension Cables ▶ P.222

Control Unit Selection Guide ▶ P.181

Control Unit Page ▶ P.185

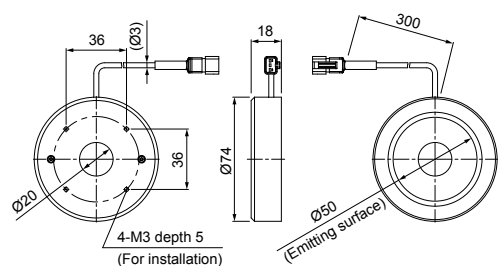
LED properties



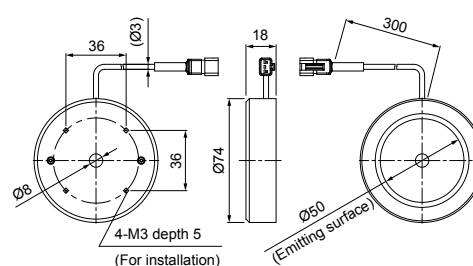
Be sure to read the "Instruction Guide" included with the product before use and observe cautionary information. The data included is for reference only and does not guarantee the quality of this product.

Dimensions (mm)

LKR-70RD2/SW2/BL2/GR2

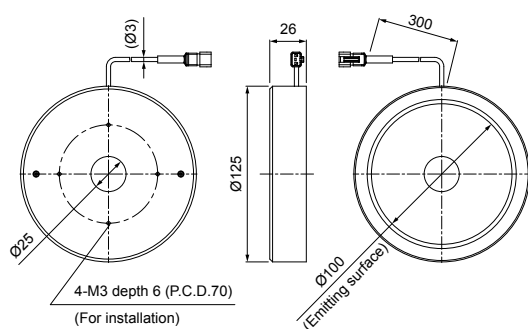


LKR-70-8RD2/SW2/BL2/GR2



* The emitting surface for the LKR-70-8SW2/BL2/GR2 is Ø49.2.

LKR-125RD2/SW2/BL2/GR2



You can change the connectors of the Light Unit cable. Choose between M12 connectors and flying leads. Refer to P.125 for details.