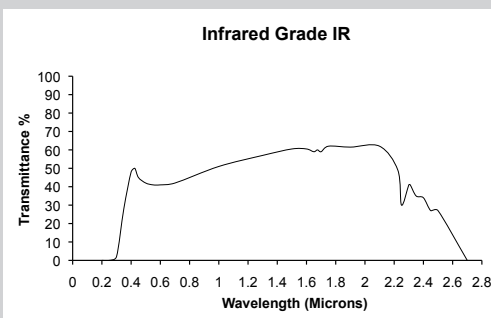
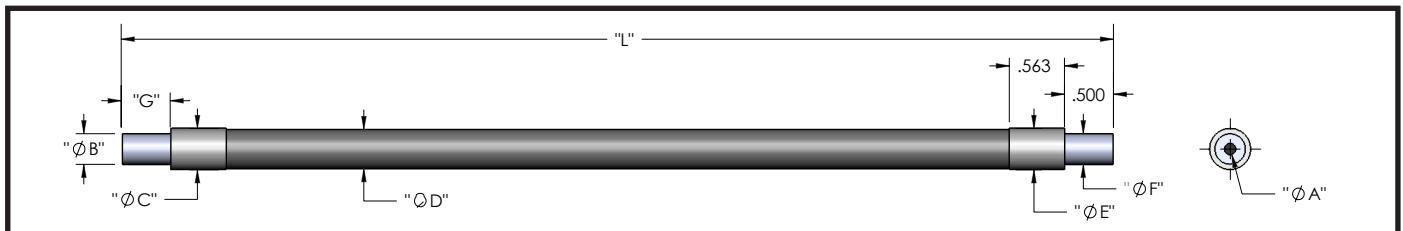


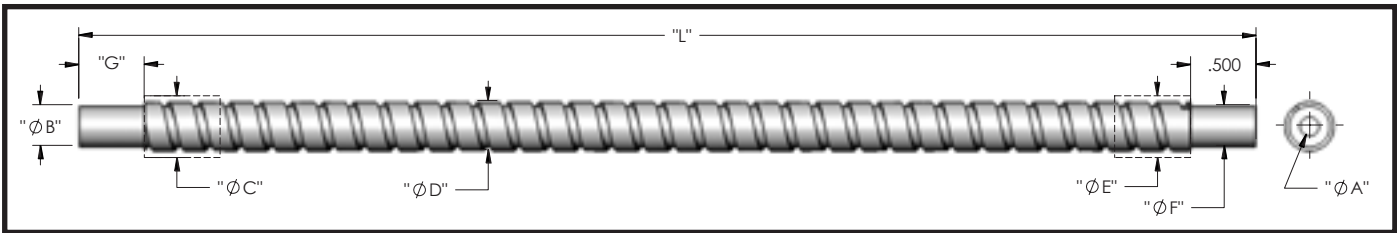
## Extended Infrared Grade IR - Silica core/PCS clad

Spectral Curve	Specifications	
 <p style="text-align: center;"><b>Infrared Grade IR</b></p>	Individual Fiber Diameter	0.010" (0.25 mm)
	Acceptance Cone	35.0°
	Numerical Aperture	.30
	Fiber Material	Core: Fused Silica    Cladding: Siloxane Polymer
	Temperature capabilities	-40°F to 372°F (-40°C to 175°C)
	Spectral Transmittance	300nm-2700nm (.30-2.7 microns)
	Minimum Bend Radius	1 ½" for 1/8" and 1/16" bundle diameter / 3" for ¼" bundle dia.
	Maximum Breakage	10%



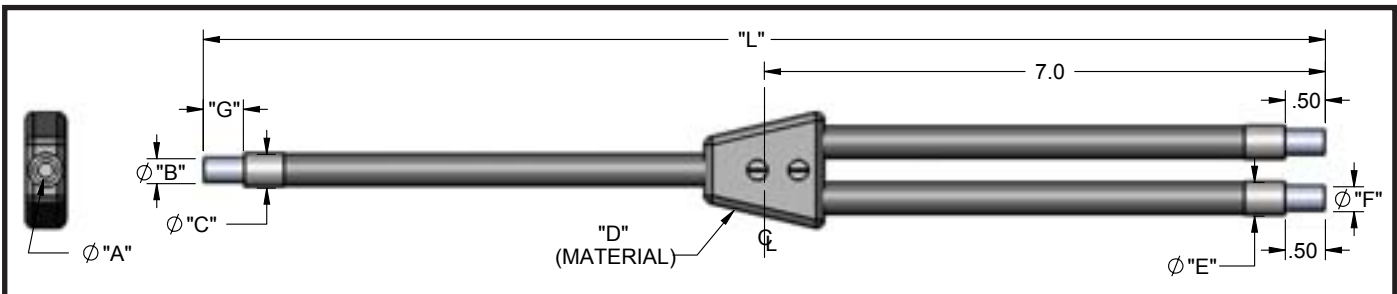
## BIR - Standard End Ferrule, PVC Monocoil Sheathing, Rated for -40°F to 221°F

Model	Part #	A	B	C	D	E	F	G	L
BIR624	002012026024								24" (609.60 mm)
BIR636	002012026036	.062"	.187"	.205"	.190"	.205"	.187"	.50"	36" (914.40 mm)
BIR672	002012026072	(1.59mm)	(4.75mm)	(5.2mm)	(4.8mm)	(5.2mm)	(4.75mm)	(12.7mm)	72" (1828.8 mm)
BIR824	002012028024								24" (609.6 mm)
BIR836	002012028036	.125"	.187"	.312"	.268"	.312"	.187"	.50"	36" (914.40 mm)
BIR848	002012028048	(3.18mm)	(4.75mm)	(7.92mm)	(6.81mm)	(7.92mm)	(4.75mm)	(12.7mm)	48" (1219.2 mm)
BIR878	002012028078								78" (1981.2 mm)
BIR424	002012024024	.250"	.312"	.468"	.430"	.468"	.312"	.50"	24" (609.60 mm)
BIR448	002012024048	(6.35mm)	(7.92mm)	(11.9mm)	(10.9mm)	(11.9mm)	(7.92mm)	(12.7mm)	48" (1219.2 mm)



### BXIR - Standard End Ferrule, Stainless Steel Sheathing, Rated for -40°F to 347°F

Model	Part #	A	B	C	D	E	F	G	L
BXIR624	002014026024	.062"	.187"	.286"	.203"	.286"	.187"	.50"	24" (609.60 mm)
BXIR636	002014026036	(1.59mm)	(4.75mm)	(7.23mm)	(5.15 mm)	(7.23mm)	(4.75mm)	(12.7mm)	36" (914.40 mm)
BXIR812	002014028012								12" (304.80 mm)
BXIR824	002014028024								24" (609.60 mm)
BXIR836	002014028036	.125"	.187"	.375"	.345"	.375"	.187"	.50"	36" (914.40 mm)
BXIR848	002014028048	(3.18mm)	(4.75mm)	(9.52mm)	(8.76mm)	(9.52mm)	(4.75mm)	(12.7mm)	48" (1219.2 mm)
BXIR884	002014028084								84" (2133.6 mm)
BXIR8108	002014028108								108" (2743.2 mm)
BXIR412	002014024012	.250"	.312"	.615"	.560"	.615"	.312"	.50"	12" (304.80 mm)
BXIR424	002014024024	(6.35mm)	(7.92mm)	(15.6mm)	(14.22mm)	(15.6mm)	(7.92mm)	(12.7mm)	24" (609.60 mm)
BXIR460	002014024060								60" (1524.0 mm)



### EIR- Standard End Ferrule, PVC Monocoil Sheathing, Rated for -40°F to 221°F

Model	Part #	A	B	C	D	E	F	G	L
EIR812	002022058012	.125"	.187"	.312"	PVC Heat	.253"	.187"	.50"	12" (304.80 mm)
EIR824	002022058024	(3.18mm)	(4.75mm)	(7.92mm)	Shrink	(6.42mm)	(4.75mm)	(12.7mm)	24" (609.60 mm)
EIR836	002022058036								36" (914.40 mm)
EIR448	002022054048	.250"	.312"	.468"	PVC Heat	.422"	.312"	.50"	48" (1219.2 mm)
		(6.35mm)	(7.92mm)	(11.9mm)	Shrink	(10.7mm)	(7.92mm)	(12.7mm)	

#### Vision Light Tech B.V.

Protonenlaan 22, 5405 NE UDEN, P.O. Box 345, 5400 AH UDEN, The Netherlands

Phone: +31 (0)413 26 00 67, Fax +31 (0)413 26 09 38, E-mail: inquiry@vlt.nl, Website: www.vlt.nl

Trade register No. 17150044, VAT No. NL8112.30.946.B01