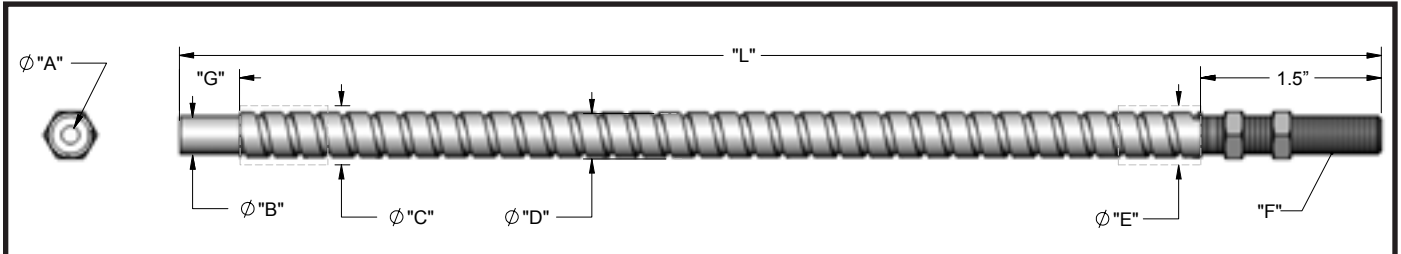


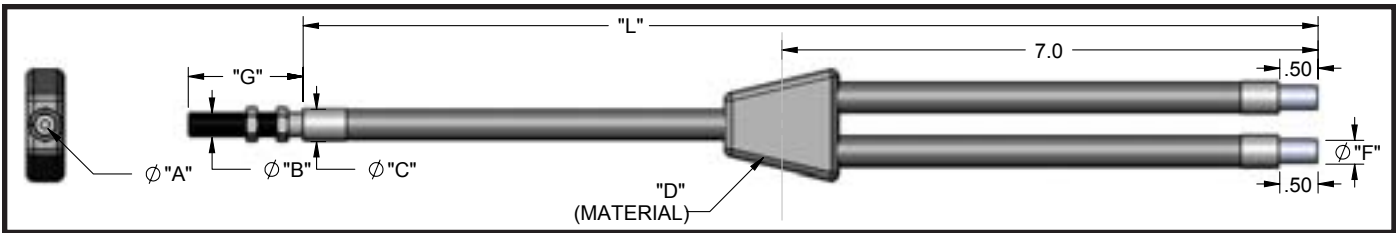
BT - Threaded End Ferrule, PVC Monocoil Sheathing, Rated for -40°F to 225°F

| Model | Part # | A | B | C | L | Thread |
|--------|--------------|--------------------|--------------------|--------------------|-------------------|-------------|
| BT636 | 002112106036 | .063" | .187" | .190" | 36" (914.40 mm) | 5/16-24 UNF |
| BT672 | 002112106072 | (1.60 mm) | (4.75 mm) | (4.83 mm) | 72" (1828.80 mm) | |
| BT824 | 002112108024 | .125" (3.18 mm) | .187" (4.75 mm) | .230" (5.84 mm) | 24" (609.60 mm) | 5/16-24 UNF |
| BT836 | 002112108036 | | | | 36" (914.40 mm) | |
| BT848 | 002112108048 | | | | 48" (1219.20 mm) | |
| BT872 | 002112108072 | | | | 72" (1828.80 mm) | |
| BT896 | 002112108096 | | | | 96" (2438.40mm) | |
| BT8120 | 002112108120 | | | | 120" (3048.01 mm) | |
| BT536 | SK96830036 | .156" (3.96 mm) | .187" (4.75 mm) | .268" (6.81 mm) | 36" (914.40 mm) | 5/16-24 UNF |
| BT548 | SK96830048 | | | | 48" (1219.20 mm) | |
| BT572 | SK96830072 | | | | 72" (1828.80 mm) | |
| BT436 | 700002434036 | .250" (6.35mm) | .312" (7.92 mm) | .400 (10.15mm) | 36" (914.40 mm) | 1/2-20 UNF |
| BT448 | 700002434048 | | | | 48" (1219.20 mm) | |
| BT472 | 700002434072 | | | | 72" (1828.80 mm) | |



BXT - Threaded End Ferrule, Stainless Steel Sheathing, Rated for -40°F to 500°F

| Model | Part # | A | B | C | L | Thread |
|---------|--------------|--------------------|--------------------|--------------------|-------------------|-------------|
| BXT618 | 002114106018 | .063" (1.60 mm) | .187" (4.75 mm) | .203" (5.16 mm) | 18" (457.20 mm) | 5/16-24 UNF |
| BXT624 | 002114106024 | | | | 24" (609.60 mm) | |
| BXT636 | 002114106036 | | | | 36" (914.40 mm) | |
| BXT648 | 002114106048 | | | | 48" (1219.20 mm) | |
| BXT672 | 002114106072 | | | | 72" (1828.80 mm) | |
| BXT812 | 002114108012 | .125" (3.18 mm) | .187" (4.75 mm) | .244" (6.20 mm) | 12" (304.80 mm) | 5/16-24 UNF |
| BXT824 | 002114108024 | | | | 24" (609.60 mm) | |
| BXT836 | 002114108036 | | | | 36" (914.40 mm) | |
| BXT848 | 002114108048 | | | | 48" (1219.20 mm) | |
| BXT860 | 002114108060 | | | | 60" (1524.00 mm) | |
| BXT872 | 002114108072 | | | | 72" (1828.80 mm) | |
| BXT896 | 002114108096 | | | | 96" (2438.40mm) | |
| BXT8120 | 002114108120 | | | | 120" (3048.01 mm) | |
| BXT536 | 002114105036 | .156" (3.96 mm) | .187" (4.75 mm) | .306" (7.77 mm) | 36" (914.40 mm) | 5/16-24 UNF |
| BXT436 | SK83490036 | .250" (6.35mm) | .312" (7.92 mm) | .422" (10.7mm) | 36" (914.40 mm) | 1/2-20 UNF |
| BXT448 | SK83490048 | | | | 48" (1219.20 mm) | |
| BXT460 | SK83490060 | | | | 60" (1524.00 mm) | |

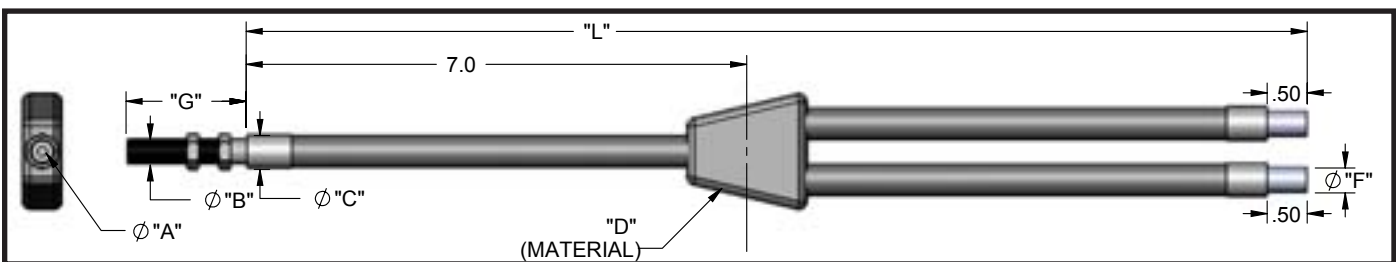


ET - Bifurcated Light Guide, Randomized, PVC Monocoil Sheathing, Threaded End, Rated for -40°F to 225°F

| Model | Part # | A | B | C | D | E | F | G | L |
|----------------------------------|--|--------------------|-------------|-------------------|-----------------|-------------------|--------------------|------------------|--|
| ET624 ET636 ET672 | 002122106024 002122106036 002122106072 | .063" (1.60 mm) | 5/16-24 UNF | .312" (7.9 mm) | PVC Heat Shrink | .205" (5.2 mm) | .187" (4.75 mm) | 1.50" (38 mm) | 24" (609.6 mm) 36" (914.4 mm) 72" (1828.8 mm) |
| ET824 ET836 ET848 ET872 | 002122108024 002122108036 002122108048 002122108072 | .125" (3.18 mm) | 5/16-24 UNF | .312" (7.9 mm) | PVC Heat Shrink | .250" (6.3 mm) | .187" (4.75 mm) | 1.50" (38 mm) | 24" (609.6 mm) 36" (914.4 mm) 48" (1219.2 mm) 72" (1828.8 mm) |
| ET536 ET572 | 002122105036 002122105072 | .156" (3.96 mm) | 5/16-24 UNF | .312" (7.9 mm) | PVC Heat Shrink | .250" (6.3 mm) | .187" (4.75 mm) | 1.50" (38 mm) | 36" (914.4 mm) 72" (1828.8 mm) |

EXT, EPXT - Bifurcated Light Guide, Randomized, Stainless Steel Sheathing, Threaded End

| Model | Part # | A | B | C | D | E | F | G | L |
|--------------------------------------|--|--------------------|-------------|-------------------|------------------|---|--------------------|------------------|--|
| EXT624 EXT636 EXT672 | 002124106024 002124106036 002124106072 | .063" (1.60 mm) | 5/16-24 UNF | .312" (7.9 mm) | Metal Transition | - | .187" (4.75 mm) | 1.50" (38 mm) | 24" (609.6 mm) 36" (914.4 mm) 72" (1828.8 mm) |
| EXT824 EXT836 EXT848 EXT872 | 002124108024 002124108036 002124108048 002124108072 | .125" (3.18 mm) | 5/16-24 UNF | .312" (7.9 mm) | Metal Transition | - | .187" (4.75 mm) | 1.50" (38 mm) | 24" (609.6 mm) 36" (914.4 mm) 48" (1219.2 mm) 72" (1828.8 mm) |
| EPXT624 EPXT636 | 002124316024 002124316036 | .063" (1.60 mm) | 5/16-24 UNF | .312" (7.9 mm) | PVC Heat Shrink | - | .187" (4.75 mm) | 1.50" (38 mm) | 24" (609.6 mm) 36" (914.4 mm) |
| EPXT824 EPXT836 | 002124318024 002124318036 | .125" (3.18 mm) | 5/16-24 UNF | .312" (7.9 mm) | PVC Heat Shrink | - | .187" (4.75 mm) | 1.50" (38 mm) | 24" (609.6 mm) 36" (914.4 mm) |



EET - Bifurcated Light Guide, Randomized, PVC Monocoil Sheathing, Threaded End, Rated for -40°F to 225°F

| Model | Part # | A | B | C | D | E | F | G | L |
|--------|--------------|--------------------|-------------|-------------------|-----------------|-------------------|--------------------|------------------|-----------------|
| EET648 | 002122386048 | .063" (1.60 mm) | 5/16-24 UNF | .312" (7.9 mm) | PVC Heat Shrink | .205" (5.2 mm) | .187" (4.75 mm) | 1.50" (38 mm) | 48" (1219.2 mm) |
| EET848 | 002122390048 | .125" (3.18 mm) | 5/16-24 UNF | .312" (7.9 mm) | PVC Heat Shrink | .250" (6.3 mm) | .187" (4.75 mm) | 1.50" (38 mm) | 48" (1219.2 mm) |
| EET548 | 002122370048 | .156" (3.96 mm) | 5/16-24 UNF | .312" (7.9 mm) | PVC Heat Shrink | .250" (6.3 mm) | .187" (4.75 mm) | 1.50" (38 mm) | 48" (1219.2 mm) |

Vision Light Tech B.V.

Protonenlaan 22, 5405 NE UDEN, P.O. Box 345, 5400 AH UDEN, The Netherlands

Phone: +31 (0)413 26 00 67, Fax +31 (0)413 26 09 38, E-mail: inquiry@vlt.nl, Website: www.vlt.nl

Trade register No. 17150044, VAT No. NL8112.30.946.B01