



Low-angle Square Lights

FPQ2 Series

Even, diffused side lighting

Low-angle, diffuse illumination enables characters and defects to be uniformly illuminated with no LED glare.



High-output Low-angle Light Unit

This square-shaped Light Unit was developed with a high shutter speed and low angle, while still maintaining a high output.

Previous Model: FPQ series (Red)



Shutter speed: 1/1,000 sec.
Light intensity: 100% dimming



FPQ2 series (Red)



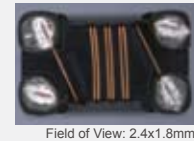
Shutter speed: 1/1,000 sec.
Light intensity: 100% dimming

Perfect Compact Size for Extremely Small Parts

The 20 x 20-mm compact size of this Light Unit makes it perfect for chip parts, integrated circuits, and other extremely small parts.

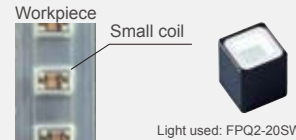


Imaging example: Imaging exterior of a coil



The entire outer surface of the coil is irradiated uniformly.

Field of View: 2.4x1.8mm



Workpiece

Small coil

Light used: FPQ2-20SW

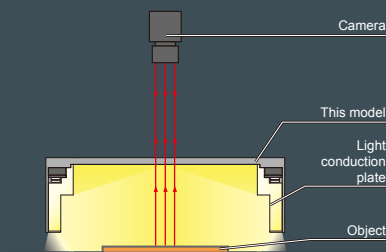
A Lineup of Light Units for a Wide Range of Applications

Select from six sizes: 20 x 20 mm, 32 x 32 mm, 48 x 48 mm, 75 x 75 mm, 96 x 96 mm, or 120 x 120 mm. There is a selection of three LED light colors: red, white, and blue. The lineup offers 18 size and color combinations.



Illumination structure of FPQ2-96

The object is illuminated from a low angle by uniform diffuse light through the light conduction plate.



Examples of low-angle Square Light images

Imaging Exterior of Food Packs

The entire outer surface of the square-shaped pack is uniformly illuminated.

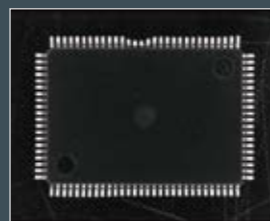
Light used: FPQ2-96RD



The lead of the IC is uniformly illuminated

The lead of the IC is uniformly illuminated.

Light Unit used: FPQ2-75SW



Imaging Exterior of Food Products

Even the entire surface of this rounded shape is illuminated uniformly.

Light used: FPQ2-75SW



Direct Number : A direct number is a 7-digit number assigned to a CCS product. You can easily access the web page providing information on any desired product by simply entering the direct number in the space provided on the CCS website pages for machine vision. (Refer to the back cover of this brochure.)

Product Lineup Table

Series	Direct Number	Model Name	Color	Power Consumption	Option	Dimension
FPQ2	1005263	FPQ2-20RD	●	24V / 1.5W		1
	1005264	FPQ2-20SW	○	24V / 2.6W	—	
	1005265	FPQ2-20BL	●	24V / 1.8W		
	1005266	FPQ2-32RD	●	24V / 6.1W		2
	1005267	FPQ2-32SW	○	24V / 5.1W	—	
	1005268	FPQ2-32BL	●	24V / 3.1W		
	1005269	FPQ2-48RD	●	24V / 5.8W		3
	1005270	FPQ2-48SW	○	24V / 11W	—	
	1005271	FPQ2-48BL	●	24V / 7.1W		
	1005272	FPQ2-75RD	●	24V / 17W		4
	1005273	FPQ2-75SW	○	24V / 16W	—	
	1005274	FPQ2-75BL	●	24V / 9.1W		
	1005275	FPQ2-96RD	●	24V / 15W		5
	1005276	FPQ2-96SW	○	24V / 21W	—	
	1005277	FPQ2-96BL	●	24V / 13W		
	1005278	FPQ2-120RD	●	24V / 18W		6
1005279	FPQ2-120SW	○	24V / 21W	—		
1005280	FPQ2-120BL	●	24V / 11W			

Dimension Diagrams (Unit: mm)

