

Micro Fiber Head Dedicated Light Sources

HLV2-22-NR-3W series

Refer to our website for product details.

CCS HLV2-22-NR-3W

Search



You can also use your smartphone or cell phone.

Use a search engine.

Provides high output spot lighting using an original optical design



Example connection with the HFS-14-500



Example connection with the HFR-25-30

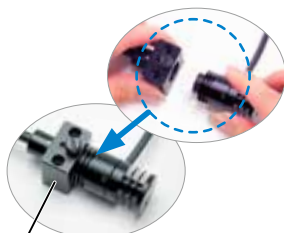


Characteristics

The micro fiber head dedicated light source allows for easy installation and removal. Select the perfect emitted color for workpiece imaging to achieve accurate characteristic extraction.

We accept custom orders. Please feel free to inquire.

- Change to format
- Increase brightness
- Change to wavelength, etc.



HFS/HFR accessory: Connection adapter (AD-HF)

For the light source of a micro fiber head



Micro Fiber Head Product Page ▶ P.117

For the light source of a full color blending unit



Full Color Blending Unit Product Page ▶ P.120

Lineup

Model name	LED color	Power consumption	Peak wavelength/ correlated color temperature	Options	Recommended Control Units	Weight
HLV2-22RD-NR-3W	Red	2.8 W	645 nm	-	<input type="checkbox"/> PD3* <input type="checkbox"/> CC-PJ-0707 <input type="checkbox"/> PJ	37 g
HLV2-22SW-NR-3W	White		5,300 K			
HLV2-22BL-NR-3W	Blue		465 nm			
HLV2-22GR-NR-3W	Green		520 nm			

LED Properties: Light Spectrum ▶ P.234

Extension Cables ▶ P.222

Control Unit Selection Guide ▶ P.181

Control Unit Page ▶ P.185

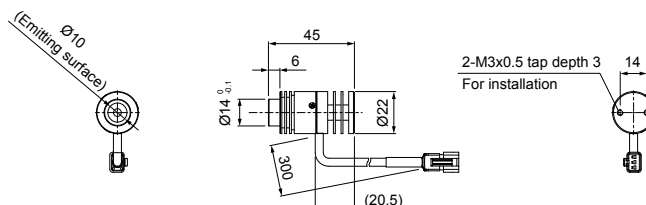
* The PD3-3024-3 and PD3-5024-3 series are not applicable to these products.

Caution

- The length of the extension cable must be 5 m or less. If you would like to use longer than 5 m, please contact your CCS sales representative.
- Branch cables cannot be used. Use the FCB series (straight cable) or the FRCB series (robot cable).

Dimensions (mm)

HLV2-22RD-NR-3W/SW-NR-3W/BL-NR-3W/GR-NR-3W



We have various materials.

PDF Drawings

DXF Drawings

3D CAD

Instruction Guides

Product Filers

Imaging Samples

Data Sheets

Examples of Custom Ordered Products

Download here.

<http://www.ccs-grp.com/dl/>