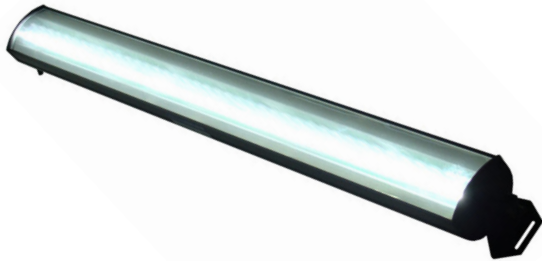


MetaBright™ Exolight

Model#: ISO-23

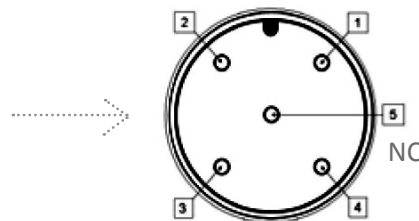


- ExoLight™ Isotropic diffused 23" fluorescent replacement style LED light.
- Whiter, brighter light with better stability than high frequency ballast T2 Fluorescent tubes.
- About 3 times brighter than fluorescent tubes.
- Our fluorescent replacement lights can be configured for wavelength and other specifications.
- Patent Pending technology.

Part #	Color	Power Supply	Specifications:
ISO-23-W-24	White 6000 K	24 volt power supply available upon request.	Current Consumption 1.2A
ISO-23-R-24	Red 630nm		Finish Black Anodized
ISO-23-B-24	Blue 470nm		Intensity Uniformity +/-5%
ISO-23-G-24	Green 530nm		Weight 3.0lb / 1360.78g
ISO-23-IRN-24	Infrared 850nm		Operating Temperature 120° F Max
ISO-23-IRL-24	Infrared 880nm		Illuminance 165,000 Lux
ISO-23-UVL-24	UV 395nm		Compliance CE/RoHS
ISO-23-UVS-24	UV 365nm		Lifetime Hours 75,000 Hours

10 ft. flying leads come standard on all products.
 Light features built-in constant current driver.
 No expensive controller required.

M12 Connector	
PIN #	Function
1	+24VDC
2	0-10VDC
3	Ground
4	Intensity Control Ground



Wiring Diagram

Flying Leads	Function
RED	+24VDC
BLACK	Ground
WHITE	0~10V
GREEN	Ground

24 AWG 4 WIRES CABLE X 1
 When not using intensity control, connect 0-10V control line to +24 (Max Intensity Control = 25V) and intensity control ground to ground

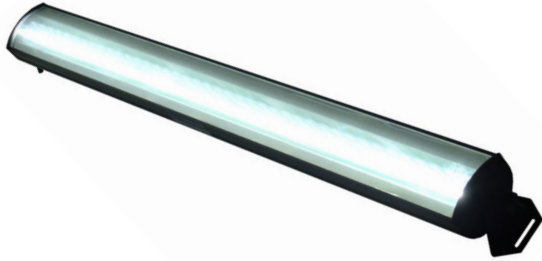
ORDERING INFORMATION:

• I S O - 2 3 - - 2 4 -

W	White 5500k	*BLANK	10 ft. Flying Leads
R	Red 630nm	T	M12 Quick Disconnect
G	Green 530nm	ILD	In Line Dimmer
B	Blue 470 nm	ILS	In Line Strobe (customer provide trigger info)
IRL	Infrared 880nm		
UVL	(long) 395nm		
UVS	(short) 365nm		

MetaBright™ Exolight

Model#: ISO-30



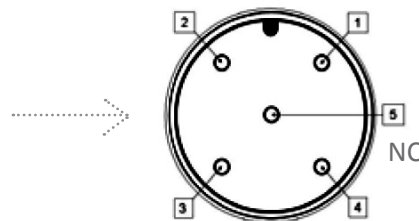
- ExoLight™ Isotropic diffused 30" fluorescent replacement style LED light.
- Whiter, brighter light with better stability than high frequency ballast T2 Fluorescent tubes.
- About 3 times brighter than fluorescent tubes.
- Our fluorescent replacement lights can be configured for wavelength and other specifications.
- Patent Pending technology.

Part #	Color	Power Supply	Specifications:
ISO-30-W-24	White 6000 K	24 volt power supply available upon request.	Current Consumption 1.2A
ISO-30-R-24	Red 630nm		Finish Black Anodized
ISO-30-B-24	Blue 470nm		Intensity Uniformity +/-5%
ISO-30-G-24	Green 530nm		Weight 3.0lb / 1360.78g
ISO-30-IRN-24	Infrared 850nm		Operating Temperature 120° F Max
ISO-30-IRL-24	Infrared 880nm		Illuminance 165,000 Lux
ISO-30-UVL-24	UV 395nm		Compliance CE/RoHS
ISO-30-UVS-24	UV 365nm		Lifetime Hours 75,000 Hours

10 ft. flying leads come standard on all products.
 Light features built-in constant current driver.
 No expensive controller required.

M12 Connector

PIN #	Function
1	+24VDC
2	0-10VDC Intensity Control
3	Ground
4	Signal Ground



Wiring Diagram

Flying Leads	Function
RED	+24VDC
BLACK	Ground
WHITE	+24VDC
GREEN	Ground

24 AWG 4 WIRES CABLE X 1

When not using intensity control, connect 0-10V control line to +24 (Max Intensity Control = 25V) and intensity control ground to ground

ORDERING INFORMATION:

• I S O - 3 0 - - 2 4 -

W	White 5500k	*BLANK	10 ft. Flying Leads
R	Red 630nm	T	M12 Quick Disconnect
G	Green 530nm	ILD	In Line Dimmer
B	Blue 470 nm	ILS	In Line Strobe (customer provide trigger info)
IRL	Infrared 880nm		
UVL	(long) 395nm		
UVS	(short) 365nm		