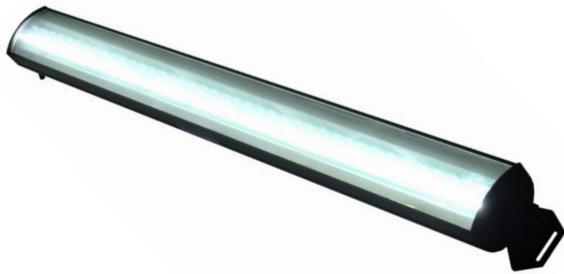




# MetaBright™ Exolight

Model#: ISO-30



- ExoLight™ Isotropic diffused 30" fluorescent replacement style LED light.
- Whiter, brighter light with better stability than high frequency ballast T2 Fluorescent tubes.
- About 3 times brighter than fluorescent tubes.
- Our fluorescent replacement lights can be configured for wavelength and other specifications.
- Patent Pending technology.

Part #	Color	Power Supply	Specifications:	
ISO-30W-24	White 6000 K	24 volt power supply available upon request.	Current Consumption	1.2A
ISO-30-R-24	Red 630nm		Finish	Aluminum
ISO-30-B-24	Blue 455nm		Intensity Uniformity	+/-5%
ISO-30-G-24	Green 530nm		Weight	
ISO-30-IRN-24	Infrared 850nm		Operating Temperature	120° F Max
ISO-30-IRL-24	Infrared 880nm		Compliance	CE/RoHS
ISO-30-UVL-24	UV 395nm		Lifetime Hours	75,000 Hours
ISO-30-UVS-24	UV 365nm			

10 ft. flying leads come standard on all products.  
Light features built-in constant current driver.  
No expensive controller required.

Active Area	Dimensions
30in	30.50in x 31.75in x 32.24in

## ORDERING INFORMATION:

• I S O - 3 0 -  - 2 4 -

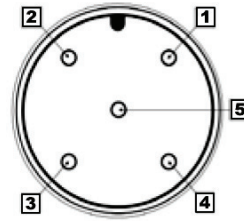
<b>W</b>	White 5500k	<b>*BLANK</b>	10 ft. Flying Leads
<b>R</b>	Red 630nm	<b>T</b>	M12 Quick Disconnect
<b>G</b>	Green 530nm	<b>ILD</b>	In Line Dimmer
<b>B</b>	Blue 455 nm	<b>ILS</b>	In Line Strobe (customer provide trigger info)
<b>IRL</b>	Infrared 880nm		
<b>UVL</b>	(long) 395nm		
<b>UVS</b>	(short) 365nm		

# MetaBright™ Exolight

Model#: ISO-30

## M12 Connector

PIN #	Function
1	+24VDC
2	0-10VDC Intensity Control
3	Ground
4	Signal Ground



## Drawing/Diagram

ZONE	REV.	DESCRIPTION	DATE	APPROVED
	B	REDRAWN, OMITTED ISO-56, KW	3/18/2011	
	C	ADDED TYPE COLUMN & ISO-30, KW	3/23/2011	
	D	ADDED ISO-34, KW	5/2/2011	

DASH NO.	TYPE	DIMENSION "A"	DIMENSION "B"	DIMENSION "C"
ISO-8	STANDARD	8.00 [203.2]	9.25 [235]	9.74 [247.4]
ISO-14	STANDARD	13.93 [353.8]	15.18 [385.6]	15.69 [398.5]
ISO-23	STANDARD	22.81 [579.5]	24.06 [611]	24.55 [623.6]
ISO-30	CUSTOM	30.50 [774.7]	31.75 [806.5]	32.24 [818.9]
ISO-34	CUSTOM	34.00 [864]	35.25 [895.4]	35.74 [907.8]
ISO-48	STANDARD	45.72 [1161.3]	46.97 [1193]	47.46 [1218]

**PROPRIETARY AND CONFIDENTIAL**  
THE INFORMATION CONTAINED IN THIS DRAWING IS THE SOLE PROPERTY OF "INSERT COMPANY NAME HERE". ANY REPRODUCTION IN PART OR AS A WHOLE WITHOUT THE WRITTEN PERMISSION OF "INSERT COMPANY NAME HERE" IS PROHIBITED.

UNLESS OTHERWISE SPECIFIED:  
DIMENSIONS ARE IN INCHES  
TOLERANCES:  
FRACTIONAL ±  
ANGULAR: MATCH ± BEND ±  
TWO PLACE DECIMAL ±  
THREE PLACE DECIMAL ±  
INTERPRET GEOMETRIC TOLERANCING PER:  
MATERIAL:  
FINISH:  
DRAWN: KW  
CHECKED:  
ENG APPR. 3-18-11  
MFG APPR.  
Q.A.  
COMMENTS:  
FILE EXO200

APPLICATION: DO NOT SCALE DRAWING

SIZE DWG. NO. REV  
**B** ISO-SEE TABLE **D**

SCALE: WEIGHT: SHEET 1 OF 1