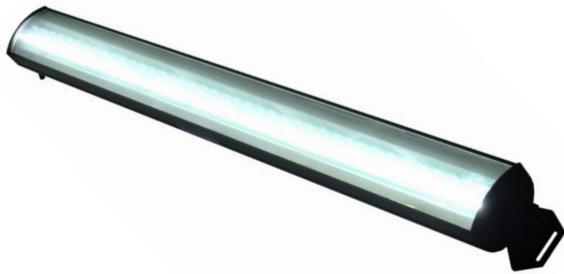




MetaBright™ Exolight

Model#: ISO-63



- ExoLight™ Isotropic diffused 63" fluorescent replacement style LED light.
- Whiter, brighter light with better stability than high frequency ballast T2 Fluorescent tubes.
- About 3 times brighter than fluorescent tubes.
- Our fluorescent replacement lights can be configured for wavelength and other specifications.
- Patent Pending technology.

Part #	Color	Power Supply	Specifications:	
ISO-63-W-24	White 6000 K	24 volt power supply available upon request.	Current Consumption	4.1A
ISO-63-R-24	Red 630nm		Finish	Powder Coated Black
ISO-63-B-24	Blue 455nm		Intensity Uniformity	+/-5%
ISO-63-G-24	Green 530nm		Weight	
ISO-63-IRN-24	Infrared 850nm		Operating Temperature	120° F Max
ISO-63-IRL-24	Infrared 880nm		Compliance	CE/RoHS
ISO-63-UVL-24	UV 395nm		Lifetime Hours	75,000 Hours
ISO-63-UVS-24	UV 365nm			

10 ft. flying leads come standard on all products.
Light features built-in constant current driver.
No expensive controller required.

Active Area	Dimensions
63in	68.43in x 72.18in x 73.65n

ORDERING INFORMATION:

• I S O - 6 3 - - 2 4 -

W	White 5500k	*BLANK	10 ft. Flying Leads
R	Red 630nm	T	M12 Quick Disconnect
G	Green 530nm	ILD	In Line Dimmer
B	Blue 455 nm	ILS	In Line Strobe (customer provide trigger info)
IRL	Infrared 880nm		
UVL	(long) 395nm		
UVS	(short) 365nm		

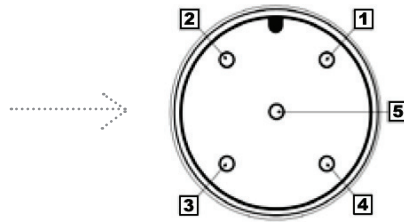


MetaBright™ Exolight

Model#: ISO-63

M12 Connector

PIN #	Function
1	+24VDC
2	0-10VDC Intensity Control
3	Ground
4	Signal Ground



Wiring Diagram

Flying Leads	Function
RED	+24VDC
BLACK	Ground
WHITE	+24VDC
GREEN	Ground

24 AWG 4 WIRES CABLE X 1

When not using intensity control, connect 0-10V control line to +24 (Max Intensity Control = 25V) and intensity control ground to ground

Drawing/Diagram

ELECTRICAL CABLE, 10FT WITH FLYING LEADS

ZONE	REV.	DESCRIPTION	DATE	APPROVED
B		REDRAWN, OMITTED ISO-56, KW	3/18/2011	
C		ADDED TYPE COLUMN & ISO-30, KW	3/23/2011	
D		ADDED ISO-34, KW	5/2/2011	

DASH NO.	TYPE	DIMENSION "A"	DIMENSION "B"	DIMENSION "C"
ISO-8	STANDARD	8.00 [203.2]	9.25 [235]	9.74 [247.4]
ISO-14	STANDARD	13.93 [353.8]	15.18 [385.6]	15.69 [398.5]
ISO-23	STANDARD	22.81 [579.5]	24.06 [611]	24.55 [623.6]
ISO-30	CUSTOM	30.50 [774.7]	31.75 [806.5]	32.24 [818.9]
ISO-34	CUSTOM	34.00 [864]	35.25 [895.4]	35.74 [907.8]
ISO-48	STANDARD	45.72 [1161.3]	46.97 [1193]	47.46 [1218]

PROPRIETARY AND CONFIDENTIAL
THE INFORMATION CONTAINED IN THIS DRAWING IS THE SOLE PROPERTY OF VISION LIGHT TECH. ANY REPRODUCTION IN PART OR AS A WHOLE WITHOUT THE WRITTEN PERMISSION OF VISION LIGHT TECH IS PROHIBITED.

UNLESS OTHERWISE SPECIFIED:	NAME	DATE	METAPHASE TECHNOLOGIES, INC.
DIMENSIONS ARE IN INCHES	DRAWN	KW	TITLE:
TOLERANCES:	CHECKED		EXOLIGHT
FRACTIONALS:	ENG APPR.	3-18-11	8, 14, 23, 48 INCH
ANGULAR: MATCH ±	MFG APPR.		AND CUSTOM SIZES
BEND ±	Q.A.		(ISOMETRIC)
TWO PLACE DECIMAL	COMMENTS:		SIZE DWG. NO. B
THREE PLACE DECIMAL	FILE EXO200		ISO-SEE TABLE
INTERPRET GEOMETRIC TOLERANCING PER:			REV D
MATERIAL:			SCALE: WEIGHT: SHEET 1 OF 1
FINISH:			
NEXT ASSY USED ON:			
APPLICATION:			
DO NOT SCALE DRAWING			