

LPP

MetaBright™ Linear Pattern Projector Model:MB-LPP



Vision Light Tech
creating optical solutions



Metaphase Technologies Pattern Projector is designed to give the most accurate measurements in 3D profiling applications. By utilizing **LED Patterns**, structured light can illuminate a sample from overhead or at a needed angle. The **LED Pattern Projector** is built to tilt light on a sample surface to ensure that focus is clear throughout application use.

LED Pattern projector illuminates a variety of patterns at different working distances. Paired with a lens and pattern reticle, the **LED pattern projector** is ideal for structured light applications. The device intensity can be controlled with a 0 ~ 10V intensity control signal. Optional manual dimmer available.

BENEFITS:

- Use with C-Mount, 2/3" format imaging lenses
- Designed for Structured Light Applications
- Project Patterns with <math><1\mu\text{m}</math> Edge Sharpness
- Built in driver, no special control required, simply provide 24VDC
- 0-10V intensity control signal
- Optional manual dimmer available.
- Versions available: Strobe, DC (Continuous) and versions for use with external controller (ULC-2)
- Patterns include: Crosshair, Stripes, Grid, Edge & Line

APPLICATIONS:

- Pick and Place
- Micro Defects
- Inspection of Black with low diffusion properties
- High Speed QC
- Small Space Apps

DOMINANT WAVELENGTH:

Part #	Color	Power Supply
MB-LPP-W-24	White 5500K	
MB-LPP-R-24	Red 630nm	
MB-LPP-B-24	Blue 470nm	
MB-LPP-G-24	Green 530nm	24 volt power supply available upon request.
MB-LPP-IRN-24	Infrared 850nm	
MB-LPP-IRL-24	Infrared 880nm	
MB-LPP-UVL-24	UV 395nm	
MB-LPP-UVS-24	UV 365nm	
MB-LPP-RGB-24	625nm / 530nm / 470nm (3 die packaging technology)	

10 ft. flying leads come standard on all products.
Light features built-in constant current driver.
No expensive controller required.

RATINGS:



Vision Light Tech B.V.

Protonenlaan 22, 5405 NE UDEN, P.O. Box 345, 5400 AH UDEN, The Netherlands

Phone: +31 (0)413 26 00 67, Fax +31 (0)413 26 09 38, E-mail: inquiry@vlt.nl, Website: www.vlt.nl

Trade register No. 17150044, VAT No. NL8112.30.946.B01

ELECTRICAL & CONTROLS:

Current Consumption	0.2A
Light Intensity	+/-5%
Illuminance	350 Lumens
Operating Temperature	-40°F(-45°) to 100°F (37.8°C)
Lifetime Hours	75,000 Hours

WIRING DIAGRAM:

RED	+24VDC
GREEN	Signal Ground
BLACK	Ground
WHITE	0-10VDC Intensity Control

24 AWG 4 WIRES CABLE X 1

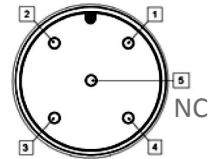
When not using intensity control, connect 0-10V control line to +24 (Max Intensity Control = 25V) and intensity control ground to ground

HOUSING:

Dimensions	Length: 4in/ 101.6 mm Width: 2in / 50.8mm
Weight	0.5lbs / 0.226kg
Housing	Aluminum
Finish	Anodized - Black

WIRING DIAGRAM:

PIN #	Function
1	+24VDC
2	0-10VDC Intensity Control
3	Ground
4	Signal Ground



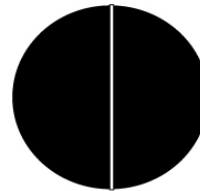
Focal Lens Selection

A = Diameter of Area

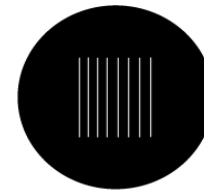
	60mm	100mm	150mm	200mm	300mm	400mm	500mm
100mm		8	6				
150mm		12	8	6			
200mm	25	16	12	8	6		
300mm		25	16	12	8	6	
400mm		35	25	16	12	8	6
500mm	50	35	25	16	12	8	
600mm		50	35	25	16	12	8
750mm		50	35	25	16	12	12
1000mm			50	35	25	16	16
1500mm			75	50	35	25	25
2000mm				100	50	35	25

Shaded Cells represent the focal length of lens

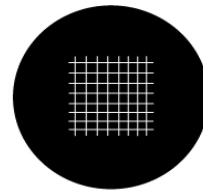
Standard Patterns



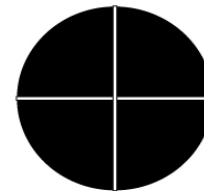
Line Pattern
LPP-LINE



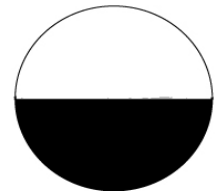
Stripe Pattern
LPP-STRIPES



Grid Pattern
LPP-GRID



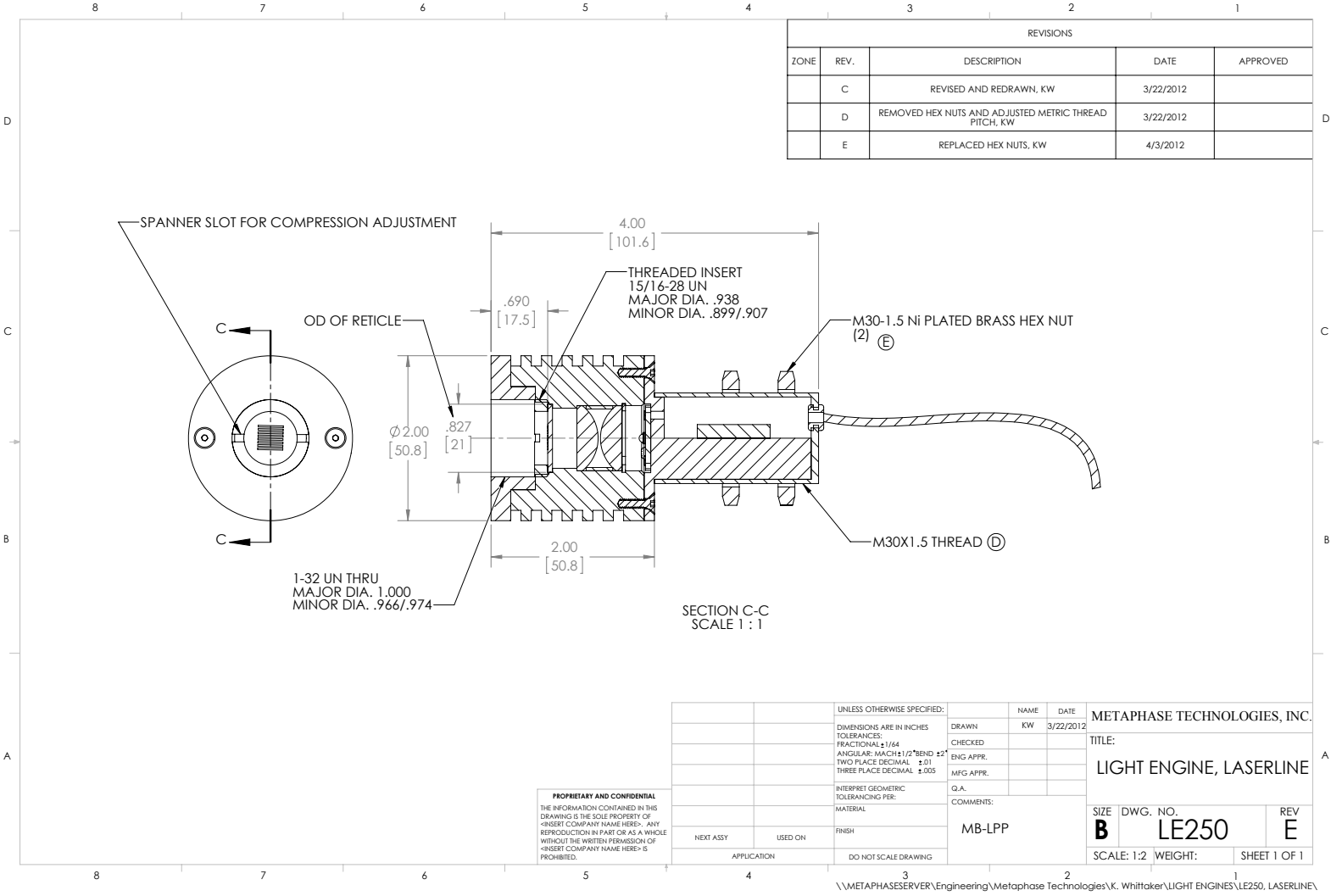
Cross Pattern
LPP-Cross



Edge Pattern
LPP-EDGE



DRAWING & DETAILS:



ORDERING INFORMATION:

- MB - LPP - □ - 24 - □
- W**- White 6000k
 - R**- Red 630nm
 - G**- Green 530nm
 - B**- Blue 470 nm
 - IRN**- Infrared 850nm
 - IRL**- Infrared 880nm
 - UVL**- UV 395nm
 - UVS**- UV 365nm
 - RGB**- 625nm / 530nm / 470nm
- ***BLANK**- 10 ft. Flying Leads
 - T**- M12 Quick Disconnect
 - ILD**- In Line Dimmer
 - ILS**- In Line Strobe (customer provide trigger info)