

# Options

## Polarization Plates

Refer to our website for product details.

CCS polarization plates

Search



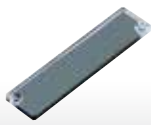
You can also use your smartphone or cell phone.

Use a search engine.

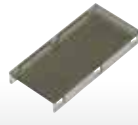
They eliminate reflections from the surface in combination with a polarization filter.



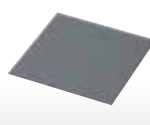
For the Ring Lights  
LDR2 series



For the Bar Lights  
LDL2-33X8 series



For the Bar Lights  
LDL2 series



For the Coaxial Lights  
LFV3 series



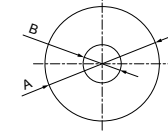
For the Spot Lights  
LSP series

### For the Ring Lights LDR2/SQR series

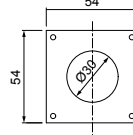
Model name	Applicable Light Unit (Common for all colors)	Dimensions		
		A	B	Thickness
PL-LDR-32*	LDR2-32	Ø32	Ø9	0.8
PL-LDR-42*	LDR2-42	Ø42	Ø14	
PL-LDR-50*	LDR2-50	Ø50	Ø26	
PL-LDR-70	LDR2-70	Ø76	Ø35	
PL-LDR-90*	LDR2-90	Ø90	Ø40	
PL-LDR-120-40*	LDR2-120	Ø120	Ø40	
PL-SQR-56	SQR-56	Refer to the drawing		

• Dimensions (mm)

PL-LDR-□□

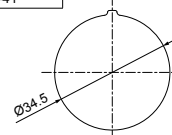


PL-SQR-56



### For the Spot Lights LSP series

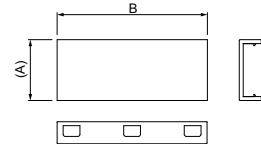
Model name	Applicable Light Unit (Common for all colors)
PL-LSP-41	LSP-41



### For the Bar Lights LDL2 series

Model name	Applicable Light Unit (Common for all colors)	Dimensions		Model name	Applicable Light Unit (Common for all colors)	Dimensions	
		A	B			A	B
PL-LDL2-33X8-HO	LDL2-33X8	10.4	44	PL-LDL2-74X30	LDL2-74X30	79	79
PL-LDL2-33X8-VE							
PL-LDL2-41X16	LDL2-41X16	23.2	46	PL-LDL2-146X30	LDL2-146X30	150.7	150.7
PL-LDL2-41X16-VE							
PL-LDL2-80X16	LDL2-80X16	84.7	84.7	PL-LDL2-218X30	LDL2-218X30	222.7	222.7
PL-LDL2-80X16-VE							
PL-LDL2-119X16	LDL2-119X16	123.7	123.7	PL-LDL2-266X30	LDL2-266X30	270.7	270.7
PL-LDL2-119X16-VE							

• Dimensions (mm)



There are two types of polarization plates for the Bar Lights LDL2 series. They are used together as shown below.

Mounted to illuminate from all four directions:

Example:  
Four LDL2-41X16 units

PL-LDL2-41X16  
(PL-LDL2-33X8-HO)  
There are two types and they should be combined so that they are paired.

PL-LDL2-41X16-VE  
(PL-LDL2-33X8-VE)

Polarization direction is 90° different.

• Distinguishing paired polarization plates

Paired

Not paired

Appears to be black

Does not appear to be black

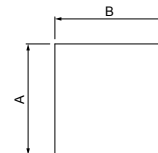
Placing paired polarization plates over each other in a cross shape makes them appear black.

They do not appear black when placed over each other in a parallel manner.

### For the Coaxial Lights LRV3/LRV2 series

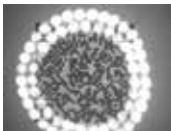
Model name	Applicable Light Unit (Common for all colors)	Dimensions			Model name	Applicable Light Unit (Common for all colors)	Dimensions		
		A	B	Thickness			A	B	Thickness
PL-LRV3-35	LRV3-35	34	42	0.8	PL-LRV2-35	LRV2-35	34	40	
PL-LRV3-50	LRV3-50	52	56		PL-LRV2-50	LRV2-50	52	54	
PL-LRV3-50X100	LRV3-50X100	52	106		PL-LRV2-70	LRV2-70	73	78	
PL-LRV3-70	LRV3-70	73	80		PL-LRV2-100	LRV2-100	100	104	
PL-LRV3-100	LRV3-100	100	106		PL-LRV2-130	LRV2-130	130	136	
PL-LRV3-130	LRV3-130	130	138		PL-LRV2-200	LRV2-200	202	222	
PL-LRV3-200	LRV3-200	202	222						

• Dimensions (mm)



#### Example of usage

Imaging of QR code



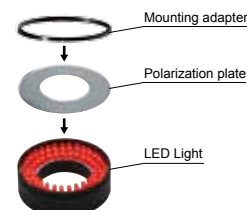
No polarization plate



Using a polarization plate

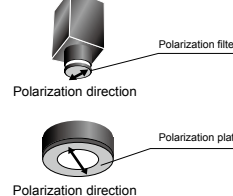
#### Example installation

Example: Attachment of Ring Lights LDR2 series



• The polarization filters and plates are used together.

(Example)



Adjustment procedures for polarization plates and polarization filters

Specular reflective components are cut out and the effects can be observed when the polarization direction of the polarization plate installed on the Light Unit and the polarization direction of the filter attached to the camera are at a right angle (90°) to each other.

Caution

Polarization plates are consumables. Heat may cause deformation or discoloring depending on the use environment. Make sure that countermeasures against overheating are implemented and that the temperature does not exceed the operating limit.