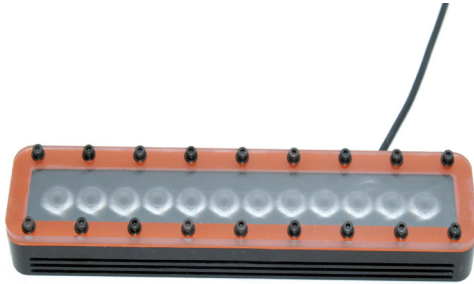


RBL

ROBOLIGHTS Model: MB-RBL-205



Vision Light Tech
creating optical solutions



MetaBright™ RoboLights provide high intensity direct illumination comparable to **MetaBright™** Front Lights and are designed for IP67 rated environments. **Robolights** feature rugged industrial housings for industrial robotics work envelopes.

The **Robolight** is a cost effective and “integrator ready” machine vision illuminator with a connectorized 24VDC power and on-board, integrated driver.

BENEFITS:

- Rugged Housings for industrial work envelopes
 - IP67 Black Anodized Aluminum
 - IP67 NEMA 4X Stainless Steel
- Connectorized and convenient 24VDC power requirements featuring an on-board and integrated constant current driver.
- Tapped holes for mounting
- Lens Options for Wide, Narrow, and Line
- Polarization Option
- Built-In Strobe Option
- Standard Wavelengths: Red, Green, Blue, IR, UV, RGB

APPLICATIONS:

- Large Work Envelopes
- Packaging Food & Drugs
- Wet Locations
- Washdown Applications
- Liquid Filling
- NEMA 4X

RATINGS:



Buy American

DOMINANT WAVELENGTH:

Part #	Color	Power Supply
MB-RBL-205-W-24	White 6000 K	
MB-RBL-205-R-24	Red 630nm	
MB-RBL-205-B-24	Blue 470nm	
MB-RBL-205-G-24	Green 530nm	24 volt power supply available upon request.
MB-RBL-205-IRN-24	Infrared 850nm	
MB-RBL-205-IRL-24	Infrared 880nm	
MB-RBL-205-UVL-24	UV 395nm	
MB-RBL-205-UVR-24	UV 365nm	

10 ft. flying leads come standard on all products.
Light features built-in constant current driver.
No expensive controller required.

Vision Light Tech B.V.

Protonenlaan 22, 5405 NE UDEN, P.O. Box 345, 5400 AH UDEN, The Netherlands

Phone: +31 (0)413 26 00 67, Fax +31 (0)413 26 09 38, E-mail: inquiry@vlt.nl, Website: www.vlt.nl

Trade register No. 17150044, VAT No. NL8112.30.946.B01

ELECTRICAL & CONTROLS:

Current Consumption	W/G/B: 0.3A
Light Intensity	+/-5%
Illuminance	106,000 Lux
Operating Temperature	-40°F(-40°C) to 100°F (37.8°C)
Lifetime Hours	75,000 Hours

WIRING DIAGRAM:

RED	+24VDC
BLACK	Ground
GREEN	Signal Ground
WHITE	0~10V

16 AWG 6 WIRES CABLE X 1

When not using intensity control, connect 0-10V control line to +24 (Max Intensity Control = 25V) and intensity control ground to ground

BUILT IN STROBE OPTION:

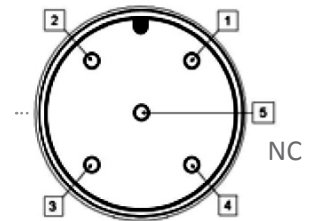
100 microseconds	BIS1
300 microseconds	BIS2
700 microseconds	BIS3
900 microseconds	BIS4
Custom Pulsewidths Available. (Call to place an order)	BISC

HOUSING:

Dimensions	Length: 6.63in/168.3mm Width: 2.5in/63.5mm Height: 1.5in/38.1mm
Weight	1lb / 453.592g
Housing	Aluminum
Finish	Black Anodized

M12 Connector:

PIN #	Function
1	+24VDC
2	0-10VDC Intensity Control
3	Ground
4	Signal Ground

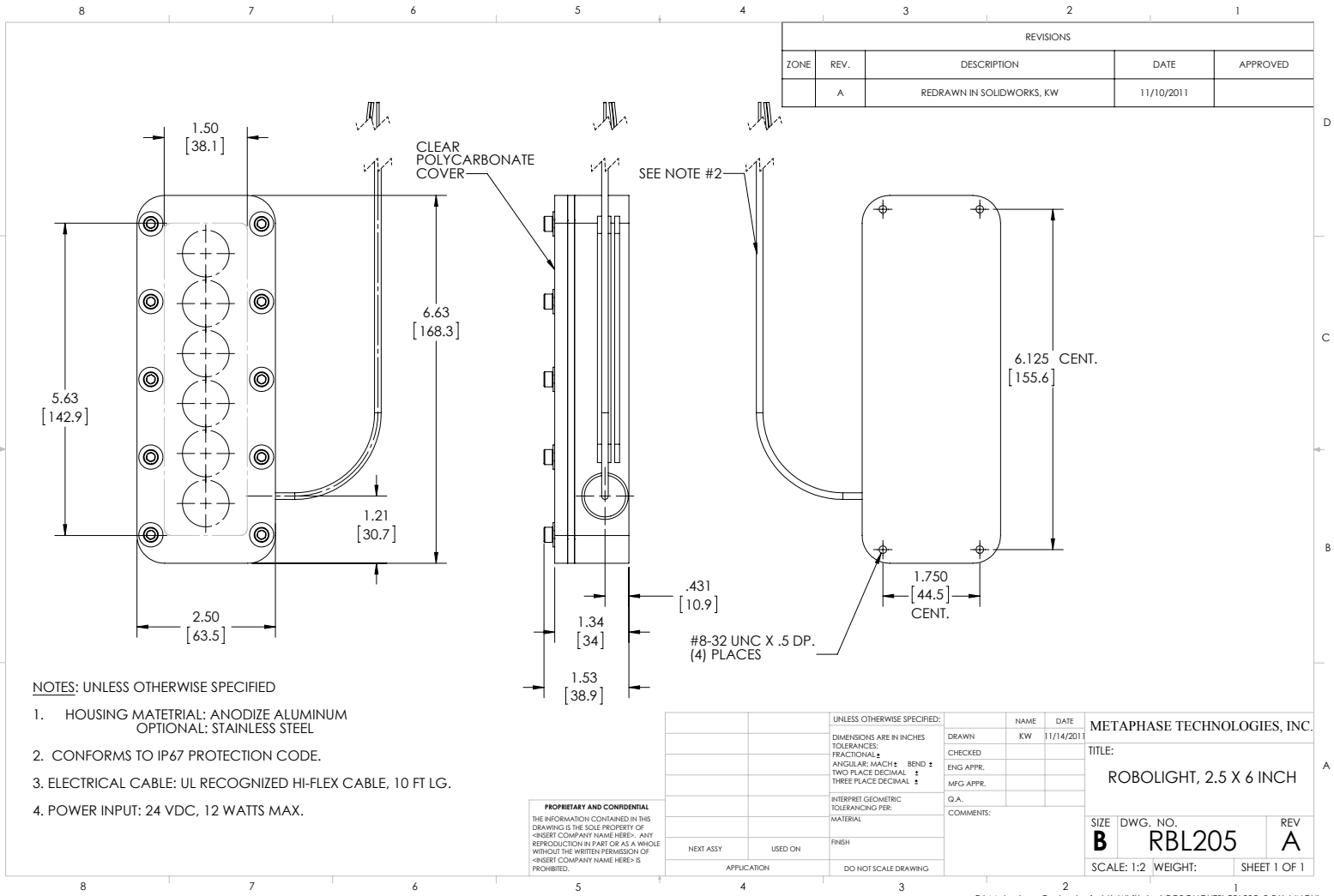


LENS & POLARIZATION OPTION:

Narrow (8°) - Standard	N
Exolight LED/Diffuser	L
Wide (34°)	W
Polarized Light	P



DRAWING & DETAILS:



ORDERING INFORMATION:

- MB-RBL-205 - - 24 -
- | | | | |
|------------|----------------|---------------|---------------------------------|
| W | White 6000k | *BLANK | 10 ft. Flying Leads |
| R | Red 630nm | T | M12 Quick Disconnect |
| G | Green 530nm | ILD | In Line Dimmer |
| B | Blue 455 nm | ILS | In Line Strobe |
| IRL | Infrared 880nm | | (customer provide trigger info) |
| UVL | (long) 395nm | | |
| UVS | (short) 365nm | | |