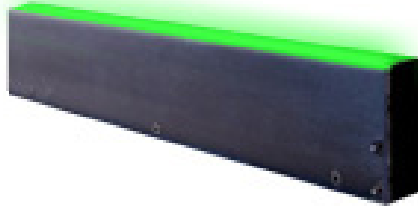




# MetaLight™ Line Light Model:LL304



**Vision Light Tech**  
creating optical solutions



Metaphase offers the industry's breakthrough performance line lights for imaging, web, and high-speed line scan applications requiring ultra-high intensity and uniformity. Our line lights are built as lean fixtures that can be easily controlled and integrated into visions systems.

Our MetaLight™ Line Lights feature an adjustable lens, enhanced cooling options, and low current consumption.

## BENEFITS:

- High Uniformity both laterally and longitudinally
- Lens Options for various beam widths and working distances
- Strobe synchronization; Control compatibility for high precision pulse-modulation and 0-10V Intensity Control capability
- Adjustable lens focusing range of mm to meters
- Backlight versions for web backlight & silhouetting applications
- From 1" to 120" (10ft) in length
- Built-in constant current driver(s) provides consistent illumination output
- 24V version require no special controllers; simply provide 24VDC

## APPLICATIONS:

- Road Surface Inspection
- Bottle Inspection
- High Speed Scanning
- Geometry Measurement
- Detection of Holes
- Sheet Inspection
- Web Inspection
- Print Inspection
- Fabrics Inspection
- Solar Cells

## RATINGS:



## DOMINANT WAVELENGTH:

Part #	Color	Power Supply
LL304-W-24	White 5500K	
LL304-R-24	Red 630nm	
LL304-B-24	Blue 470nm (Optional 455nm)	
LL304-G-24	Green 530nm	24 volt power supply available upon request.
LL304-IRN-24	Infrared 850nm	

10 ft. flying leads come standard on all products.  
Light features built-in constant current driver.  
No expensive controller required.

### Vision Light Tech B.V.

Protonenlaan 22, 5405 NE UDEN, P.O. Box 345, 5400 AH UDEN, The Netherlands

Phone: +31 (0)413 26 00 67, Fax +31 (0)413 26 09 38, E-mail: inquiry@vlt.nl, Website: www.vlt.nl

Trade register No. 17150044, VAT No. NL8112.30.946.B01



# MetaLight™ Line Light

## Model:LL304



**Vision Light Tech**  
creating optical solutions

### ELECTRICAL & CONTROLS:

Current Consumption	0.5A - 0.8A
Light Intensity	+/-5%
Illuminance	220,000 Lux
Operating Temperature	-40°F(-45°) to 100°F (37.8°C)
Lifetime Hours	75,000 Hours

### WIRING DIAGRAM:

RED	+24VDC
GREEN	Signal Ground
BLACK	Ground
WHITE	0-10VDC Intensity Control

18 AWG 4 WIRES CABLE X 1

When not using intensity control, connect 0-10V control line to +24 (Max Intensity Control = 25V) and intensity control ground to ground

### HOUSING:

Dimensions	Length: 10.938in / 277.8mm Width: 1in / 25.4mm Height: 2.95in / 74.88mm
Weight	1lb/ 453.592g
Housing	Aluminum
Finish	Powder Coating - Black

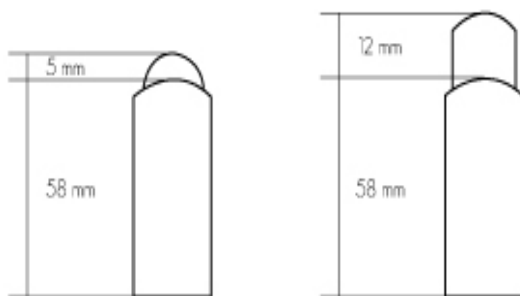
### WIRING DIAGRAM:

PIN #	Function
1	+24VDC
2	0-10VDC Intensity Control
3	Ground
4	Signal Ground



### FOCAL LENS:

#### MetaLight Line Light Lens Options



#### Vision Light Tech B.V.

Protonenlaan 22, 5405 NE UDEN, P.O. Box 345, 5400 AH UDEN, The Netherlands

Phone: +31 (0)413 26 00 67, Fax +31 (0)413 26 09 38, E-mail: inquiry@vlt.nl, Website: www.vlt.nl

Trade register No. 17150044, VAT No. NL8112.30.946.B01

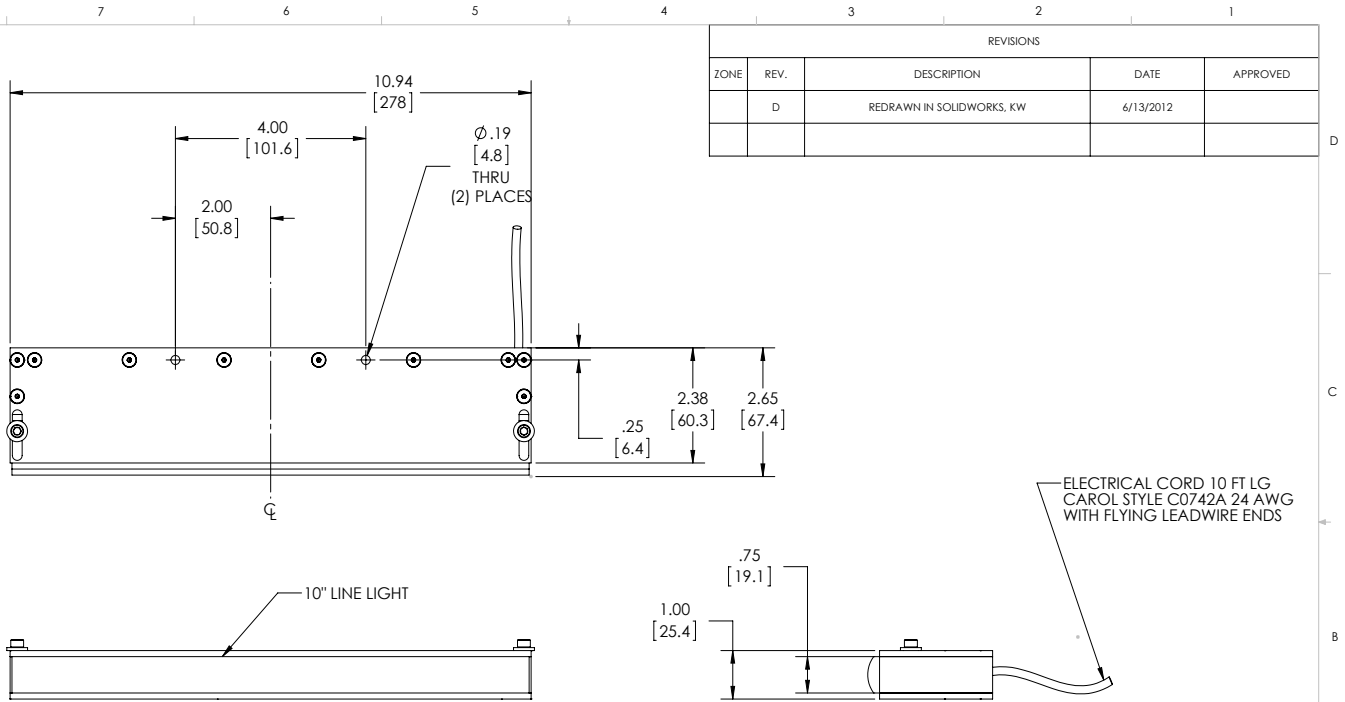


# MetaLight™ Line Light Model:LL304



**Vision Light Tech**  
creating optical solutions

## DRAWING & DETAILS:



REVISIONS				
ZONE	REV.	DESCRIPTION	DATE	APPROVED
	D	REDRAWN IN SOLIDWORKS, KW	6/13/2012	

**PROPRIETARY AND CONFIDENTIAL**  
THE INFORMATION CONTAINED IN THIS DRAWING IS THE SOLE PROPERTY OF <INSERT COMPANY NAME HERE>. ANY REPRODUCTION IN PART OR AS A WHOLE WITHOUT THE WRITTEN PERMISSION OF <INSERT COMPANY NAME HERE> IS PROHIBITED.

UNLESS OTHERWISE SPECIFIED:		NAME	DATE	METAPHASE TECHNOLOGIES, INC.	
DIMENSIONS ARE IN INCHES		DRAWN	KW	6/13/2012	
TOLERANCES:		CHECKED			
FRACTIONALS ±		ENG APPR.			
ANGULAR: MATCH ± BEND ±		MFG APPR.			
TWO PLACE DECIMAL ±		G.A.			
THREE PLACE DECIMAL ±		COMMENTS:			
INTERPRET GEOMETRIC TOLERANCING PER:					
MATERIAL:					
NEXT ASSY	USED ON	FINISH			
APPLICATION	DO NOT SCALE DRAWING				

TITLE:		
LINE LIGHT, 10 INCH, METATIGHT		
SIZE	DWG. NO.	REV
<b>B</b>	<b>LL304</b>	<b>D</b>
SCALE: 1:2	WEIGHT:	SHEET 1 OF 1

## ORDERING INFORMATION:

• LL304 -  - 24 -

**Back Line Light Option:**  
Replace designator "LL" with "BLL" on the prefix for units deployed in transmitted imaging applications.  
ex: BLL304-R-24

**W**- White 6000k  
**R**- Red 630nm  
**G**- Green 530nm  
**B**- Blue 470 nm  
(Optional 450nm)  
**IRN**- Infrared 850nm

**\*BLANK**- 10 ft. Flying Leads  
**T**- M12 Quick Disconnect  
**ILD**- In Line Dimmer  
**ILS**- In Line Strobe (customer provide trigger info)  
**LL** - Long Focal Lens

\* Intensity will be lower for NON-Fan option

**Vision Light Tech B.V.**

Protonenlaan 22, 5405 NE UDEN, P.O. Box 345, 5400 AH UDEN, The Netherlands

Phone: +31 (0)413 26 00 67, Fax +31 (0)413 26 09 38, E-mail: inquiry@vlt.nl, Website: www.vlt.nl

Trade register No. 17150044, VAT No. NL8112.30.946.B01