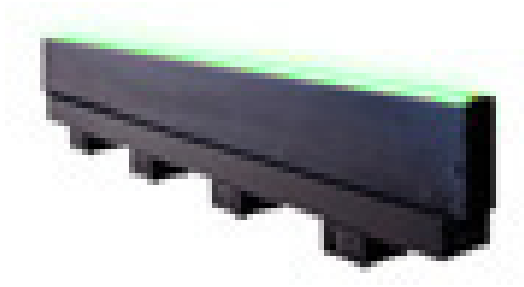




MetaBright™ Line Light Model:MB-LL506



Vision Light Tech
creating optical solutions



Metaphase offers the industry's breakthrough performance line lights for imaging, web, and high-speed line scan applications requiring ultra-high intensity and uniformity. Our line lights are built as lean fixtures that can be easily controlled and integrated into visions systems.

Our **MetaBright™ Line Lights** feature an adjustable lens and low current consumption.

BENEFITS:

- High Uniformity both laterally and longitudinally
- High Intensity, over 1 million Lux
- Lens Options for various beam widths and working distances
- Available in various Light wavelengths including IR, UV and RGB
- Strobe synchronization; Control compatibility for high precision pulse-modulation and 0-10V Intensity Control capability
- Adjustable lens focusing range of mm to meters
- Backlight versions for web backlight & silhouetting applications
- From 1" to 120" (10ft) in length
- Built-in constant current driver(s) - consistent illumination output
- 24V version require no special controllers; simply provide 24VDC

APPLICATIONS:

- Road Surface Inspection
- Bottle Inspection
- High Speed Scanning
- Sheet Inspection
- Web Inspection
- Print Inspection

RATINGS:



DOMINANT WAVELENGTH:

| Part # | Color | Power Supply |
|-----------------|-----------------------------|--|
| MB-LL506-W-24 | White 5500K | |
| MB-LL506-R-24 | Red 630nm | |
| MB-LL506-B-24 | Blue 470nm (Optional 455nm) | |
| MB-LL506-G-24 | Green 530nm | 24 volt power supply available upon request. |
| MB-LL506-IRN-24 | Infrared 850nm | |
| MB-LL506-IRL-24 | Infrared 880nm | |
| MB-LL506-UVL-24 | UV 395nm | |
| MB-LL506-UVS-24 | UV 365nm | |

10 ft. flying leads come standard on all products.
Light features built-in constant current driver.
No expensive controller required.

Vision Light Tech B.V.

Protonenlaan 22, 5405 NE UDEN, P.O. Box 345, 5400 AH UDEN, The Netherlands

Phone: +31 (0)413 26 00 67, Fax +31 (0)413 26 09 38, E-mail: inquiry@vlt.nl, Website: www.vlt.nl

Trade register No. 17150044, VAT No. NL8112.30.946.B01



MetaBright™ Line Light

Model:MB-LL506



Vision Light Tech
creating optical solutions

ELECTRICAL & CONTROLS:

| | |
|-----------------------|-------------------------------|
| Current Consumption | 4.4A |
| Light Intensity | +/-5% |
| Illuminance | 1.6Million Lux |
| Operating Temperature | -40°F(-45°) to 100°F (37.8°C) |
| Lifetime Hours | 75,000 Hours |

HOUSING:

| | |
|------------|---|
| Dimensions | Length: 21.06in/535mm Width: 1.57in/39.9mm Height: 4.69in/119.2mm |
| Weight | 6lb/2721.55g |
| Housing | Aluminum |
| Finish | Powder Coating - Black |

WIRING DIAGRAM:

| | |
|---------------|---------------------------|
| WHITE & RED | +24VDC |
| GREEN | Signal Ground |
| BLACK & GREEN | Ground |
| WHITE | 0-10VDC Intensity Control |

18 AWG 4 WIRES CABLE X 1 w/ 24 AWG 2 WIRES CABLE X 1
When not using intensity control, connect 0-10V control line to +24 (Max Intensity Control = 25V) and intensity control ground to ground

WIRING DIAGRAM:

| PIN # | Function |
|-------|---------------------------|
| 1 | +24VDC |
| 2 | 0-10VDC Intensity Control |
| 3 | Ground |
| 4 | Signal Ground |



FOCAL LENS:

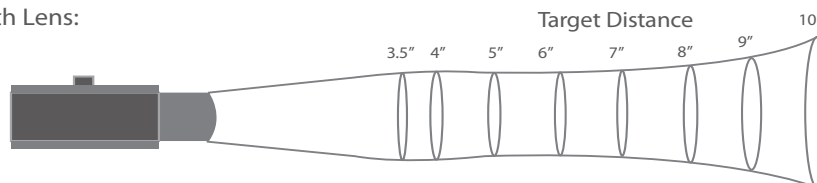
KEY: values in parenthesis are millimeter measurements

Standard Focal Length Lens:



| Target Distance | 0.5" (13) | 0.75" (19) | 1.00" (25) | 1.25" (32) | 1.50 (38) | 2.00" (51) | 2.50" (68) | 3.00" (88) | 3.50" (89) |
|-------------------------|--------------|---------------|---------------|---------------|--------------|---------------|---------------|---------------|---------------|
| Intensity (million LUX) | .80 | 1.27 | 1.21 | 1.18 | 1.16 | .90 | .66 | .47 | .32 |
| Line Width | 0.4 (10) | .25 (6.3) | .2 (5) | .2 (5) | .18 (4.6) | .18 (4.6) | .18 (4.6) | .3 (7.6) | >.3 (10) |

Longer Focal Length Lens:



| Target Distance | 3.5" (89) | 4.0" (102) | 5.0" (127) | 6.0" (162) | 7.0" (178) | 8.0" (203) | 9.0" (229) | 10.0" (264) |
|--------------------------|--------------|---------------|---------------|---------------|---------------|---------------|---------------|----------------|
| Intensity (million LUX)* | 1.07 | 1.1 | 1.1 | 1.1 | 1.1 | 1.09 | 1.04 | .98 |
| Line Width | .2 (5) | .2 (5) | .2 (5) | .35 (8.9) | .4 (10) | .4 (10) | .5 (12.7) | .6 (15.2) |

Vision Light Tech B.V.

Protonenlaan 22, 5405 NE UDEN, P.O. Box 345, 5400 AH UDEN, The Netherlands

Phone: +31 (0)413 26 00 67, Fax +31 (0)413 26 09 38, E-mail: inquiry@vlt.nl, Website: www.vlt.nl

Trade register No. 17150044, VAT No. NL8112.30.946.B01



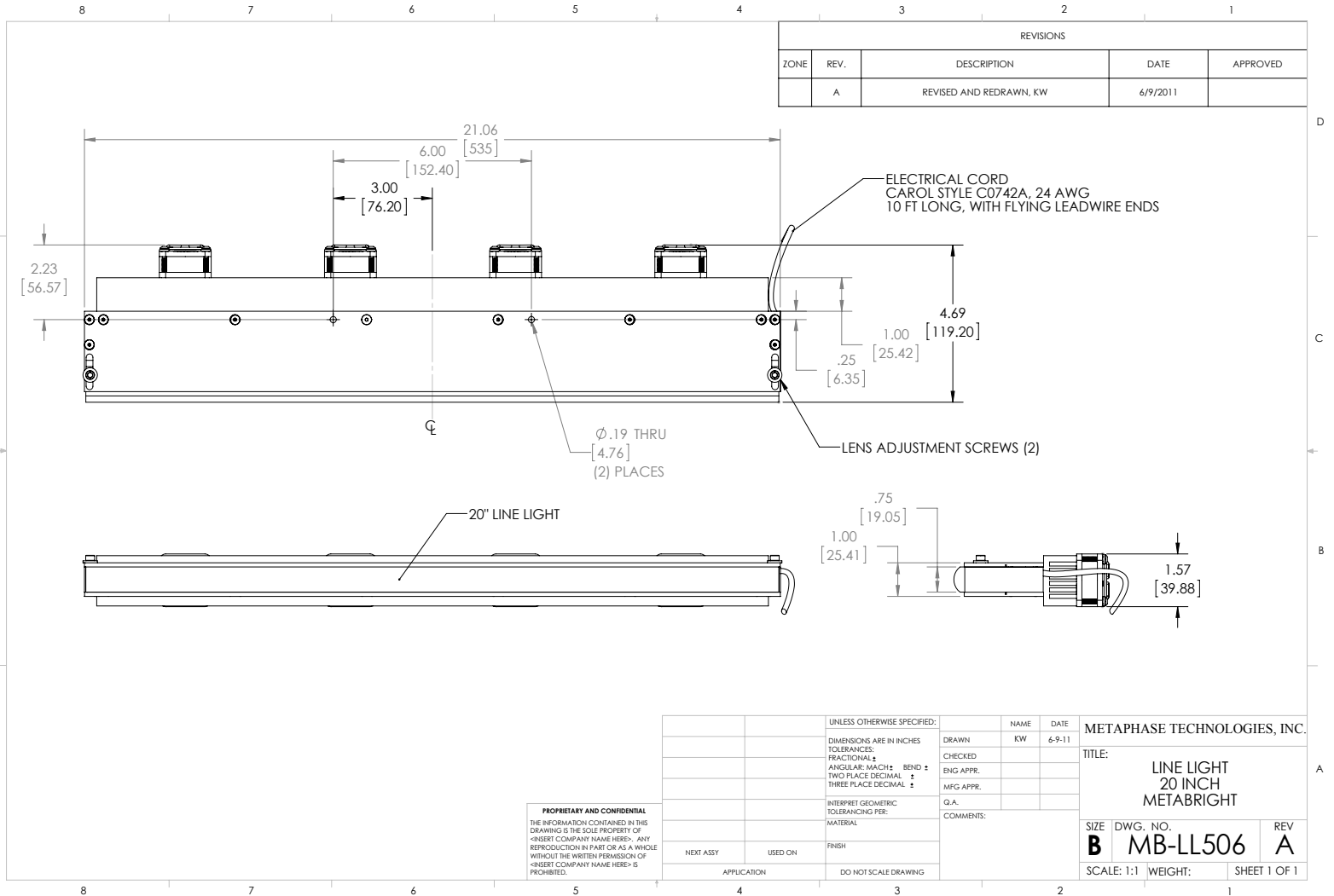
MetaBright™ Line Light

Model:MB-LL506



Vision Light Tech
creating optical solutions

DRAWING & DETAILS:



ORDERING INFORMATION:

• MB - LL 506 - □ - 24 - □

Back Line Light Option:

Replace designator "LL" with "BLL" on the prefix for units deployed in transmitted imaging applications.

ex: MB-BLL106-R-24

W- White 6000k

R- Red 630nm

G- Green 530nm

B- Blue 470 nm

(Optional 450nm)

IRN- Infrared 850nm

UVL- (long) 395nm

UVS- (short) 365nm

***BLANK**- 10 ft. Flying Leads

T- M12 Quick Disconnect

ILD- In Line Dimmer

ILS- In Line Strobe (customer provide trigger info)

LL - Long Focal Lens

NF- No Fans

* Intensity will be lower for NON-Fan option

Vision Light Tech B.V.

Protonenlaan 22, 5405 NE UDEN, P.O. Box 345, 5400 AH UDEN, The Netherlands

Phone: +31 (0)413 26 00 67, Fax +31 (0)413 26 09 38, E-mail: inquiry@vlt.nl, Website: www.vlt.nl

Trade register No. 17150044, VAT No. NL8112.30.946.B01