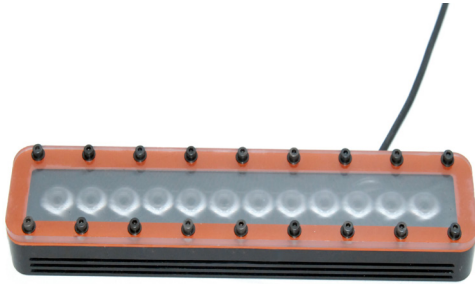


# RBL

## ROBOLIGHTS Model: MB-RBL-305



**MetaBright™ RoboLights** provide high intensity direct illumination comparable to **MetaBright™** Front Lights and are designed for IP67 rated environments. **Robolights** feature rugged industrial housings for industrial robotics work envelopes.

The **Robolight** is a cost effective and “integrator ready” machine vision illuminator with a connectorized 24VDC power and on-board, integrated driver.

### BENEFITS:

- Rugged Housings for industrial work envelopes
  - IP67 Black Anodized Aluminum
  - IP67 NEMA 4X Stainless Steel
- Connectorized and convenient 24VDC power requirements featuring an on-board and integrated constant current driver.
- Tapped holes for mounting
- Lens Options for Wide, Narrow, and Line
- Polarization Option
- Built-In Strobe Option
- Standard Wavelengths: Red, Green, Blue, IR, UV, RGB

### DOMINANT WAVELENGTH:

Part #	Color	Power Supply
MB-RBL-305-W-24	White 6000 K	
MB-RBL-305-R-24	Red 630nm	
MB-RBL-305-B-24	Blue 470nm	
MB-RBL-305-G-24	Green 530nm	24 volt power supply available upon request.
MB-RBL-305-IRN-24	Infrared 850nm	
MB-RBL-305-IRL-24	Infrared 880nm	
MB-RBL-305-UVL-24	UV 395nm	
MB-RBL-305-UVR-24	UV 365nm	

10 ft. flying leads come standard on all products.  
Light features built-in constant current driver.  
No expensive controller required.

### APPLICATIONS:

- Large Work Envelopes
- Packaging Food & Drugs
- Wet Locations
- Washdown Applications
- Liquid Filling
- NEMA 4X

### RATINGS:



Buy American

#### Vision Light Tech B.V.

Protonenlaan 22, 5405 NE UDEN, P.O. Box 345, 5400 AH UDEN, The Netherlands

Phone: +31 (0)413 26 00 67, Fax +31 (0)413 26 09 38, E-mail: inquiry@vlt.nl, Website: www.vlt.nl

Trade register No. 17150044, VAT No. NL8112.30.946.B01

### ELECTRICAL & CONTROLS:

Current Consumption	R: 0.6A W/G/B: 0.7A
Light Intensity	+/-5%
Illuminance	106,000 Lux
Operating Temperature	-40°F(-40°C) to 100°F (37.8°C)
Lifetime Hours	75,000 Hours

### WIRING DIAGRAM:

RED	+24VDC
BLACK	Ground
GREEN	Signal Ground
WHITE	0~10V

16 AWG 6 WIRES CABLE X 1

When not using intensity control, connect 0-10V control line to +24 (Max Intensity Control = 25V) and intensity control ground to ground

### BUILT IN STROBE OPTION:

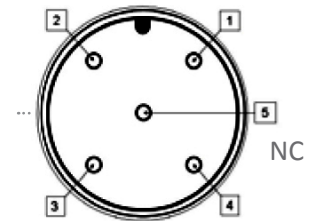
100 microseconds	BIS1
300 microseconds	BIS2
700 microseconds	BIS3
900 microseconds	BIS4
Custom Pulsewidths Available. (Call to place an order)	BISC

### HOUSING:

Dimensions	Length: 12.5in/317.5mm Width: 2.5in/63.5mm Height: 1.38in/35.1mm
Weight	2lb / 907.185
Housing	Aluminum
Finish	Black Anodized

### M12 Connector:

PIN #	Function
1	+24VDC
2	0-10VDC Intensity Control
3	Ground
4	Signal Ground

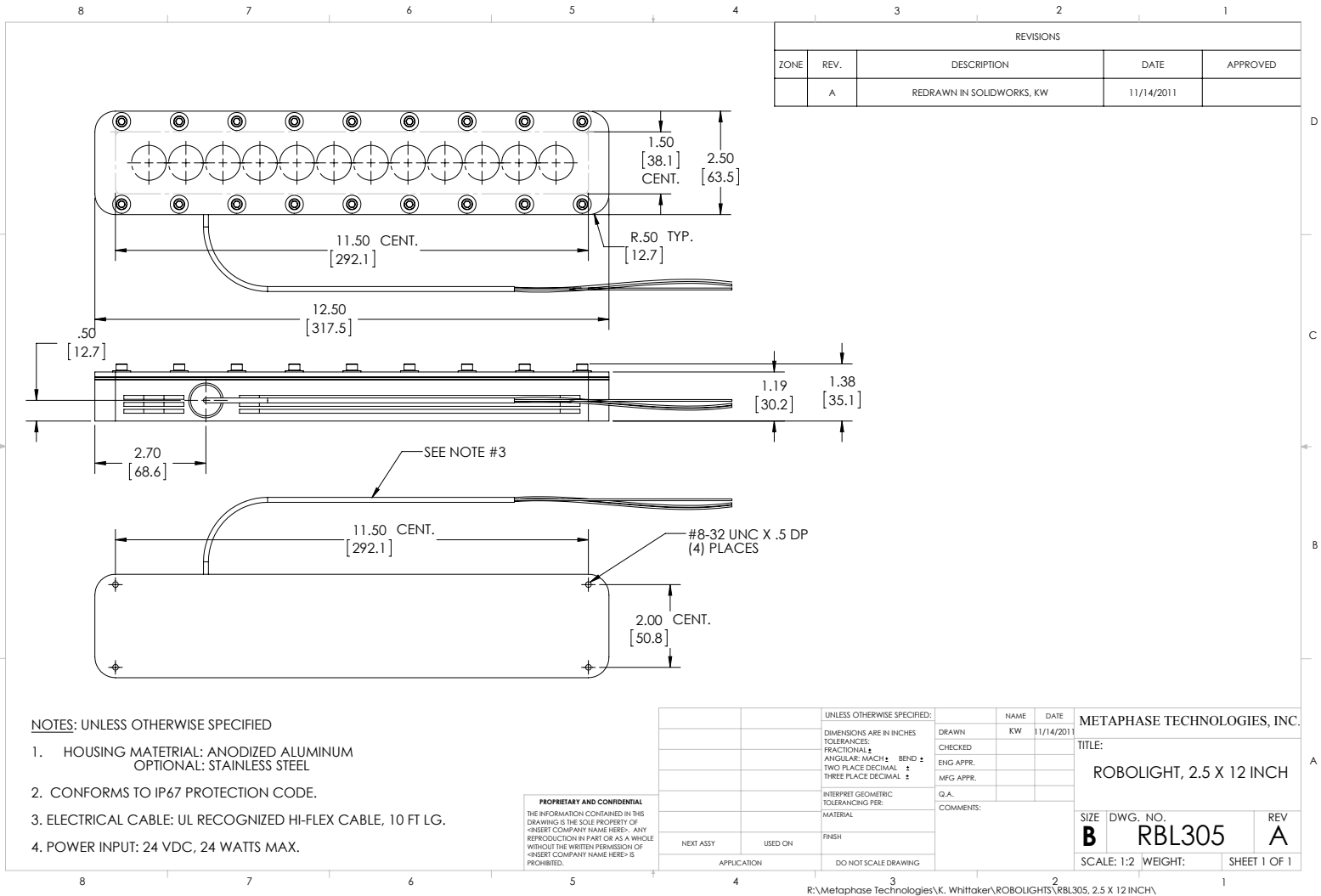


### LENS & POLARIZATION OPTION:

Narrow (8°) - Standard	N
Exolight LED/Diffuser	L
Wide (34°)	W
Polarized Light	P



### DRAWING & DETAILS:



### ORDERING INFORMATION:

- **M B - R B L - 3 0 5** -  - **2 4** -
- |            |                |               |                                 |
|------------|----------------|---------------|---------------------------------|
| <b>W</b>   | White 6000k    | <b>*BLANK</b> | 10 ft. Flying Leads             |
| <b>R</b>   | Red 630nm      | <b>T</b>      | M12 Quick Disconnect            |
| <b>G</b>   | Green 530nm    | <b>ILD</b>    | In Line Dimmer                  |
| <b>B</b>   | Blue 455 nm    | <b>ILS</b>    | In Line Strobe                  |
| <b>IRL</b> | Infrared 880nm |               | (customer provide trigger info) |
| <b>UVL</b> | (long) 395nm   |               |                                 |
| <b>UVS</b> | (short) 365nm  |               |                                 |