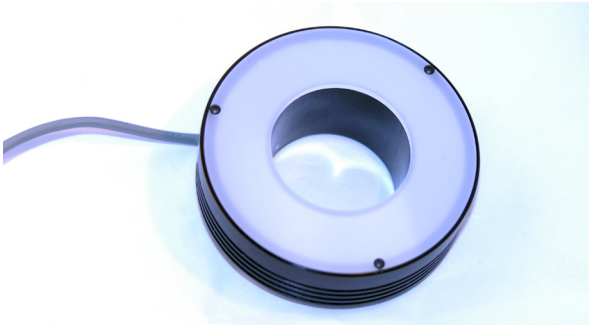




# MetaBright™ Ringlight

Model#: MB-RL301



- Configurable for various wavelengths including IR, UV, RGB
- Continuous, Dimming, and Strobbing controllability modes
- Homogenous light output
- Brightfield and Darkfield illumination
- One-piece machined aluminum housings
- Thermal potting assures long life performance in rugged environments.

Part #	Color	Power Supply	Specifications:	
MB-RL301-W-24	White 6000 K	24 volt power supply available upon request.	Current Consumption	0.9A
MB-RL301-R-24	Red 630nm		Finish	Powder Coated Black
MB-RL301-B-24	Blue 455nm		Intensity Uniformity	+/-5%
MB-RL301-G-24	Green 530nm		Weight	.22kg
MB-RL301-IRN-24	Infrared 850nm		Operating Temperature	120° F Max
MB-RL301-IRL-24	Infrared 880nm		Compliance	CE/RoHS
			Lifetime Hours	75,000 Hours

10 ft. flying leads come standard on all products.  
Light features built-in constant current driver.  
No expensive controller required.

### Contact us:

Contact your Metaphase Technologies Representative for options including: Diffuser Choice, Polarizer & Light Control Film, Specific Intensity & Uniformity, & Wavelength.

## ORDERING INFORMATION:

• M B - R L 3 0 1 -  - 2 4 -

<b>W</b>	White 5500k	<b>*BLANK</b>	10 ft. Flying Leads
<b>R</b>	Red 630nm	<b>T</b>	M12 Quick Disconnect
<b>G</b>	Green 530nm	<b>ILD</b>	In Line Dimmer
<b>B</b>	Blue 455 nm	<b>ILS</b>	In Line Strobe (customer provide trigger info)
<b>IRL</b>	Infrared 880nm		
<b>UVL</b>	(long) 395nm		
<b>UVS</b>	(short) 365nm		



# MetaBright™ Ring Light

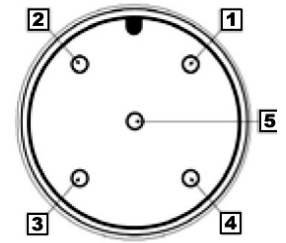
Model#: MB-RL301

## Wiring Diagram

Flying Leads	Function
RED	+24VDC
BLACK	Ground
WHITE	0~10VDC
GREEN	Ground

## M12 Connector

PIN #	Function
1	+24VDC
2	0-10VDC Intensity Control
3	Ground
4	Signal Ground



24 AWG 4 WIRES CABLE X 1

When not using intensity control, connect 0-10V control line to +24 (Max Intensity Control = 25V) and intensity control ground to ground

## Drawing/Diagram

