

# Bar Lights

## LDL2 series

Refer to our website for product details.

CCS LDL2

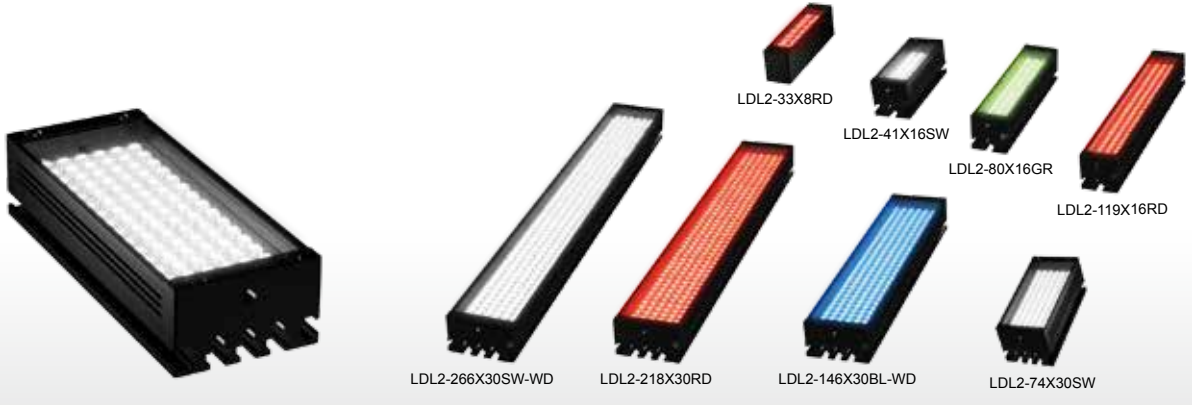
Search



You can also use your smartphone or cell phone.

Use a search engine.

Provides direct light from an emitting part equipped with LEDs in straight lines



### Applications

Various inspections for reading text, visual inspection for damage on long and thin workpieces, damage inspection for metal with hairline finishing, light source for a line sensor camera, and various inspections to detect foreign material, etc.

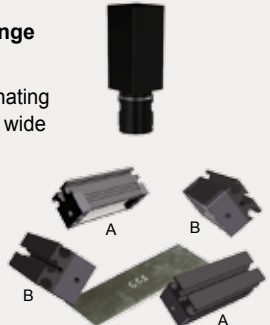
### Rich lineup with 15 types and 61 models

We have a lineup of 15 types and 60 models, such as combinations of the size and emitting width of the emitting surface, directional characteristics, and the emitted color.

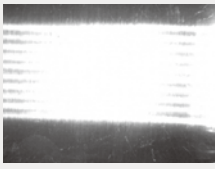
#### Compatible with a wide range of uses

You can freely adjust the illuminating direction and angle for use in a wide range of uses.

Because Bar Lights can freely adjust their illuminating direction and angle to match the workpiece, they can provide the optimal image.



Illuminating image from direction A



Illuminating image from direction B



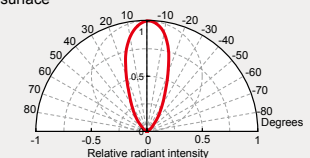
### Bar Lights that use surface-mounted LEDs

These are Bar Lights that use surface-mounted LEDs. We provide the narrow type, which performs convergent illumination for a narrow space, and the wide type (-WD) which illuminates a wide space.

#### Select the directional characteristics of a narrow type or wide type

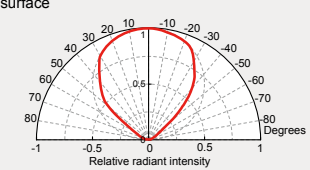
##### Directional characteristics of the Narrow Type

Zoomed-in view of the emitting surface



##### Directional characteristics of the Wide Type (-WD)

Zoomed-in view of the emitting surface

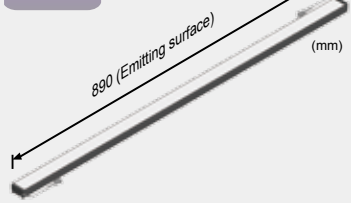


### Custom orders

Please contact your CCS sales representative.

E.g.: Different shape

Format Create a Light Unit with a long size



#### Customizable items

External/internal diameter

Wavelength/color

Increase output

Cable length

Illuminating angle

Format/material

Connector format

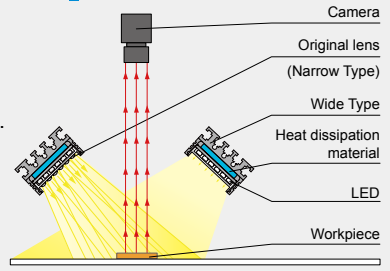
Installation/mounting

Etc.

### Example configuration

Achieved light with a narrow directionality using the original lens located in front of the LEDs. Illuminates direct light from any angle.

#### LDL2-74X30



- Direct Lighting
  - LDR2
  - LDR2-LA
  - LDR-LA1
  - SQR
  - SQR-TP
- Convergent Lighting
  - HLDR-IP
- Diffused Lighting
  - HPR2
  - HPR
  - LFR
  - LKR
  - FPR
  - FPQ2
  - LDL2
  - LDLB
  - HLDL2
- Direct Lighting
  - TH
  - LFL
  - HPD2
  - HPD
  - LDM2
  - LAV
  - PDM
  - LFX2
  - LFV3
  - LFV2
- Colimated Lighting
  - MSU
  - MFU
- Ultraviolet Lighting
  - UV2
  - UV
  - LNSP-UV-FN
- Infrared Lighting
  - IR2
- Spot Lighting, Etc.
  - HLV2
  - LV
  - LSP
  - HFS/HFR
  - HLV2-NR
  - HLV2-3M-RGB-3W
  - PFB2
  - PFBR
- Convergent Lighting
  - LNSP
  - CU-LNSP
  - LNSP-FN
  - LN/LN-HK
- Diffused Lighting
  - LNSD
  - LND2
  - HLND
  - LT
  - LNW/HLDN
- Oblique Angled Lighting
  - LNIS
  - LNIS-FN
- Lenses
  - Telecentric Lens
  - Macro Lens

We have various materials.

- PDF Drawings
- DXF Drawings
- 3D CAD
- Instruction Guides
- Product Filers
- Imaging Samples
- Data Sheets
- Examples of Custom Ordered Products

Download here. <http://www.ccs-grp.com/dl/>

## ➤ Imaging example : Imaging of damage in sheet metal (hairline finishing)



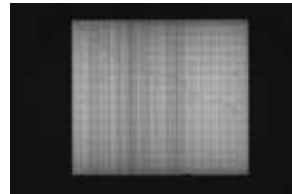
Description	Visual inspection
Workpiece	Aluminum sheet (hairline finishing)
Before the proposal	LED Bar Light
After the proposal	LDL2-74X30RD Proposed the optimal illuminating angle and illuminating direction
Result	Extracts only the damage

### Workpiece image



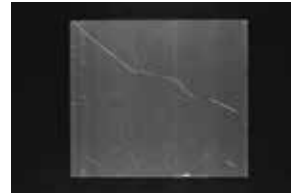
Aluminum sheet  
(hairline finishing)

### LED Bar Light



Due to reflection from the hairline finishing surface, it is difficult to form an image of the damage.

### LDL2-74X30RD



Surface reflection is reduced and a clear image of the damage can be made.

## ➤ Imaging example : Exterior imaging of confectionery packaging

### Workpiece image



Confectionery packaging

### LED Ring Light



Due to reflection from the surface, it is difficult to form an image of the characters.

### LDL2-119X16SW



Surface reflection is removed and a clear image of the characters can be made.

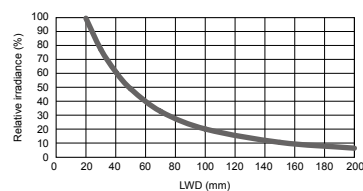
## ➤ Data: Relative irradiance graph/Uniformity graph (Representative example)

\* The graph included is for reference only and does not guarantee the quality of this product.

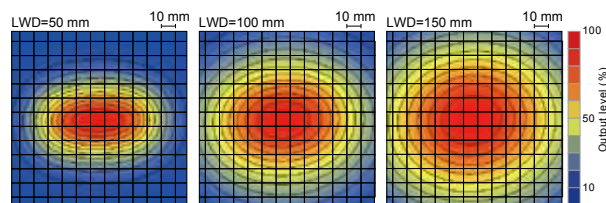
### LDL2-74X30SW (Narrow type)

#### Relative irradiance graph<sup>\*1</sup> (LWD Characteristics)<sup>\*2</sup>

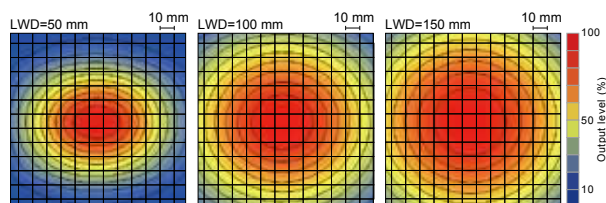
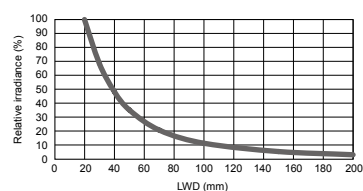
\*1: Irradiance on the optical axis  
\*2: Illuminating distance from the Light Unit to the workpiece



#### Uniformity graph (Relative irradiance)



### LDL2-74X30SW-WD (Wide type)



Direct Lighting  
LDR2  
LDR2-LA  
LDR-LA1  
SQR  
SQR-TP

Convergent Lighting  
HLDR-IP

Diffused Lighting  
HPR2  
HPR  
LFR  
LKR  
FPR  
FPQ2

Direct Lighting  
LDL2  
LDLB  
HLDL2

TH  
LFL  
HPD2

Diffused Lighting  
HPD  
LDM2  
LAV  
PDM  
LFX2  
LFX3  
LFX2

Collimated Lighting  
MSU  
MFU

Ultraviolet Lighting  
UV2  
UV  
LNSP-UV-FN

Infrared Lighting  
IR2

HLV2  
LV

Spot Lighting, Etc.  
LSP  
HFS/HFR  
HLV2-NR  
HLV2-3M-RGB-3W  
PFB2  
PFBR

Convergent Lighting  
LNSP  
CU-LNSP  
LNSP-FN  
LN/LN-HK

Diffused Lighting  
LNSD  
LND2  
HLND  
LT  
LN/HLDN

Oblique Angled Lighting  
LNIS

Lenses  
LNIS-FN  
Telecentric Lens  
Macro Lens

# LDL2 series



Refer to our website for product details.

CCS LDL2

Use a search engine.



You can also use your smartphone or cell phone.

## Lineup (Standard Products) \* End of the model name: -WD: Wide type

	Model name	LED color	Emitting surface size	Power consumption	Peak wavelength/ correlated color temperature	Options	Recommended Control Units	Weight
Emitting width: 8 mm	LDL2-33X8RD*1	Red	33×8 mm	24 V / 1.3 W	635 nm	<input type="checkbox"/> Diffusion plate <input type="checkbox"/> Polarization plate <input type="checkbox"/> Bracket	<input type="checkbox"/> PD3 <input type="checkbox"/> CC-ST-1024 <input type="checkbox"/> PSB <input type="checkbox"/> PTU2* * Can only use red, white, blue, and green.	20 g
	LDL2-33X8SW*1	White		24 V / 0.8 W	6,600 K			
	LDL2-33X8BL*1	Blue			470 nm			
	LDL2-33X8GR*1	Green			525 nm			
	LDL2-33X8IR850*1*2	Infrared			24 V / 1.3 W			
Emitting width: 16 mm	LDL2-41X16RD	Red	41×16 mm	24 V / 1.9 W	635 nm	<input type="checkbox"/> Diffusion plate <input type="checkbox"/> Polarization plate <input type="checkbox"/> Protective panel <input type="checkbox"/> Bracket	<input type="checkbox"/> PD3 <input type="checkbox"/> CC-ST-1024 <input type="checkbox"/> PSB <input type="checkbox"/> PTU2	50 g
	LDL2-41X16SW	White			6,600 K			
	LDL2-41X16BL	Blue			470 nm			
	LDL2-41X16GR	Green			525 nm			
	LDL2-41X16RD-WD	Red	41×16 mm	24 V / 1.9 W	635 nm	<input type="checkbox"/> Diffusion plate <input type="checkbox"/> Polarization plate <input type="checkbox"/> Protective panel <input type="checkbox"/> Bracket	<input type="checkbox"/> PD3 <input type="checkbox"/> CC-ST-1024 <input type="checkbox"/> PSB <input type="checkbox"/> PTU2	50 g
	LDL2-41X16SW-WD	White			6,600 K			
	LDL2-41X16BL-WD	Blue			470 nm			
	LDL2-41X16GR-WD	Green			525 nm			
	LDL2-80X16RD	Red	80×16 mm	24 V / 3.8 W	635 nm	<input type="checkbox"/> Diffusion plate <input type="checkbox"/> Polarization plate <input type="checkbox"/> Protective panel <input type="checkbox"/> Bracket	<input type="checkbox"/> PD3 <input type="checkbox"/> CC-ST-1024 <input type="checkbox"/> PSB <input type="checkbox"/> PTU2	75 g
	LDL2-80X16SW	White			6,600 K			
	LDL2-80X16BL	Blue			470 nm			
	LDL2-80X16GR	Green			525 nm			
LDL2-80X16RD-WD	Red	80×16 mm	24 V / 3.8 W	635 nm	<input type="checkbox"/> Diffusion plate <input type="checkbox"/> Polarization plate <input type="checkbox"/> Protective panel <input type="checkbox"/> Bracket	<input type="checkbox"/> PD3 <input type="checkbox"/> CC-ST-1024 <input type="checkbox"/> PSB <input type="checkbox"/> PTU2	75 g	
LDL2-80X16SW-WD	White			6,600 K				
LDL2-80X16BL-WD	Blue			470 nm				
LDL2-80X16GR-WD	Green			525 nm				
Emitting width: 19 mm	LDL2-119X16RD	Red	119×16 mm	24 V / 5.7 W	635 nm	<input type="checkbox"/> Diffusion plate <input type="checkbox"/> Polarization plate <input type="checkbox"/> Protective panel <input type="checkbox"/> Bracket	<input type="checkbox"/> PD3 <input type="checkbox"/> CC-ST-1024 <input type="checkbox"/> PSB <input type="checkbox"/> PTU2	95 g
	LDL2-119X16SW	White			6,600 K			
	LDL2-119X16BL	Blue			470 nm			
	LDL2-119X16GR	Green			525 nm			
	LDL2-119X16RD-WD	Red	119×16 mm	24 V / 5.7 W	635 nm	<input type="checkbox"/> Diffusion plate <input type="checkbox"/> Polarization plate <input type="checkbox"/> Protective panel <input type="checkbox"/> Bracket	<input type="checkbox"/> PD3 <input type="checkbox"/> CC-ST-1024 <input type="checkbox"/> PSB <input type="checkbox"/> PTU2	95 g
	LDL2-119X16SW-WD	White			6,600 K			
	LDL2-119X16BL-WD	Blue			470 nm			
	LDL2-119X16GR-WD	Green			525 nm			
Emitting width: 30 mm	LDL2-74X30RD	Red	74×30 mm	24 V / 5.7 W	635 nm	<input type="checkbox"/> Diffusion plate <input type="checkbox"/> Polarization plate <input type="checkbox"/> Protective panel <input type="checkbox"/> Bracket	<input type="checkbox"/> PD3 <input type="checkbox"/> CC-ST-1024 <input type="checkbox"/> PSB <input type="checkbox"/> PTU2	100 g
	LDL2-74X30SW	White			6,600 K			
	LDL2-74X30BL	Blue			470 nm			
	LDL2-74X30GR	Green			525 nm			
	LDL2-74X30RD-WD	Red	74×30 mm	24 V / 5.7 W	635 nm	<input type="checkbox"/> Diffusion plate <input type="checkbox"/> Polarization plate <input type="checkbox"/> Protective panel <input type="checkbox"/> Bracket	<input type="checkbox"/> PD3 <input type="checkbox"/> CC-ST-1024 <input type="checkbox"/> PSB <input type="checkbox"/> PTU2	100 g
	LDL2-74X30SW-WD	White			6,600 K			
	LDL2-74X30BL-WD	Blue			470 nm			
	LDL2-74X30GR-WD	Green			525 nm			

\*1: All LEDs of the LDL2-33X8 have wide type directional characteristics.

\*2: Please inquire if you would like to use in combination with a Strobe Control Unit (overdrive type).

[Extension Cables ▶ P.222](#)

[Control Unit Selection Guide ▶ P.181](#)

[Control Unit Page ▶ P.185](#)

- LDR2
- LDR2-LA
- LDR-LA1
- SQR
- SQR-TP
- HLDR-IP
- HPR2
- HPR
- LFR
- LKR
- FPR
- FPQ2
- LDL2**
- LDLB
- HLDL2
- TH
- LFL
- HPD2
- HPD
- LDM2
- LAV
- PDM
- LFX2
- LFV3
- LFV2
- MSU
- MFU
- UV2
- UV
- LNSP-UV-FN
- IR2
- HLV2
- LV
- LSP
- HFS/HFR
- HLV2-NR
- HLV2-3M-RGB-3W
- PFB2
- PFBR
- LNSP
- CU-LNSP
- LNSP-FN
- LN/LN-HK
- LNSD
- LND2
- HLND
- LT
- LNW/HLDN
- LNIS
- LNIS-FN
- Telecentric Lens
- Macro Lens

We have various materials.

- [PDF Drawings](#)
- [DXF Drawings](#)
- [3D CAD](#)
- [Instruction Guides](#)
- [Product Filers](#)
- [Imaging Samples](#)
- [Data Sheets](#)
- [Examples of Custom Ordered Products](#)

Download here. <http://www.ccs-grp.com/dl/>

\* End of the model name: -WD: Wide type

	Model name	LED color	Emitting surface size	Power consumption	Peak wavelength/ correlated color temperature	Options	Recommended Control Units	Weight
Emitting width: 30 mm	LDL2-146X30RD	Red	146×30 mm	24 V / 12 W	635 nm	<input type="checkbox"/> Diffusion plate <input type="checkbox"/> Polarization plate <input type="checkbox"/> Protective panel <input type="checkbox"/> Bracket	<input type="checkbox"/> PD3 <input type="checkbox"/> PSB <input type="checkbox"/> PTU2	170 g
	LDL2-146X30SW	White			6,600 K			
	LDL2-146X30BL	Blue			470 nm			
	LDL2-146X30GR	Green			525 nm			
	LDL2-146X30RD-WD	Red	146×30 mm	24 V / 12 W	635 nm	<input type="checkbox"/> Diffusion plate <input type="checkbox"/> Polarization plate <input type="checkbox"/> Protective panel <input type="checkbox"/> Bracket	<input type="checkbox"/> PD3 <input type="checkbox"/> PSB <input type="checkbox"/> PTU2	170 g
	LDL2-146X30SW-WD	White			6,600 K			
	LDL2-146X30BL-WD	Blue			470 nm			
	LDL2-146X30GR-WD	Green			525 nm			
	LDL2-218X30RD	Red	218×30 mm	24 V / 18 W	635 nm	<input type="checkbox"/> Diffusion plate <input type="checkbox"/> Polarization plate <input type="checkbox"/> Protective panel <input type="checkbox"/> Bracket	<input type="checkbox"/> PD3 <input type="checkbox"/> PSB <input type="checkbox"/> PTU2	240 g
	LDL2-218X30SW	White			6,600 K			
	LDL2-218X30BL	Blue			470 nm			
	LDL2-218X30GR	Green			525 nm			
	LDL2-218X30RD-WD	Red	218×30 mm	24 V / 18 W	635 nm	<input type="checkbox"/> Diffusion plate <input type="checkbox"/> Polarization plate <input type="checkbox"/> Protective panel <input type="checkbox"/> Bracket	<input type="checkbox"/> PD3 <input type="checkbox"/> PSB <input type="checkbox"/> PTU2	240 g
	LDL2-218X30SW-WD	White			6,600 K			
	LDL2-218X30BL-WD	Blue			470 nm			
	LDL2-218X30GR-WD	Green			525 nm			
LDL2-266X30RD	Red	266×30 mm	24 V / 21 W	635 nm	<input type="checkbox"/> Diffusion plate <input type="checkbox"/> Polarization plate <input type="checkbox"/> Protective panel <input type="checkbox"/> Bracket	<input type="checkbox"/> PD3 <input type="checkbox"/> PSB <input type="checkbox"/> PTU2	280 g	
LDL2-266X30SW	White			6,600 K				
LDL2-266X30BL	Blue			470 nm				
LDL2-266X30GR	Green			525 nm				
LDL2-266X30RD-WD	Red	266×30 mm	24 V / 21 W	635 nm	<input type="checkbox"/> Diffusion plate <input type="checkbox"/> Polarization plate <input type="checkbox"/> Protective panel <input type="checkbox"/> Bracket	<input type="checkbox"/> PD3 <input type="checkbox"/> PSB <input type="checkbox"/> PTU2	280 g	
LDL2-266X30SW-WD	White			6,600 K				
LDL2-266X30BL-WD	Blue			470 nm				
LDL2-266X30GR-WD	Green			525 nm				

Extension Cables ▶ P.222

Control Unit Selection Guide ▶ P.181

Control Unit Page ▶ P.185

### ▶ Lineup (Special Orders) \* End of the model name: -WD: Wide type

	Model name	LED color	Emitting surface size	Power consumption	Peak wavelength/ correlated color temperature	Options	Recommended Control Units	Weight
Emitting width: 16 mm	LDL2-158X16RD (-WD)	Red	158×16 mm	24 V / 7.6 W	635 nm	Please inquire for more information.	<input type="checkbox"/> PD3 <input type="checkbox"/> CC-ST-1024 <input type="checkbox"/> PSB <input type="checkbox"/> PTU2	120 g
	LDL2-158X16SW (-WD)	White			6,600 K			
	LDL2-158X16BL (-WD)	Blue			470 nm			
	LDL2-158X16GR (-WD)	Green			525 nm			
	LDL2-197X16RD (-WD)	Red	197×16 mm	24 V / 9.5 W	635 nm			
	LDL2-197X16SW (-WD)	White			6,600 K			
	LDL2-197X16BL (-WD)	Blue			470 nm			
	LDL2-197X16GR (-WD)	Green			525 nm			
	LDL2-236X16RD (-WD)	Red	236×16 mm	24 V / 12 W	635 nm		<input type="checkbox"/> PD3 <input type="checkbox"/> PSB <input type="checkbox"/> PTU2	170 g
	LDL2-236X16SW (-WD)	White			6,600 K			
	LDL2-236X16BL (-WD)	Blue			470 nm			
	LDL2-236X16GR (-WD)	Green			525 nm			

Extension Cables ▶ P.222

Control Unit Selection Guide ▶ P.181

Control Unit Page ▶ P.185

You can inquire using our website.

Requests for Light Unit Selection

Requests for Loan Products

Requests for Estimates

Requests for a Catalog

Product Inquiries

Other Inquiries

Inquire on our website here.  
<http://www.ccs-grp.com/contact/>

- Direct Lighting
  - LDR2
  - LDR2-LA
  - LDR-LA1
  - SQR
  - SQR-TP
- Convergent Lighting
  - HLDR-IP
- Diffused Lighting
  - HPR2
  - HPR
  - LFR
  - LKR
  - FPR
  - FPQ2
  - LDL2**
  - LDLB
  - HLDL2
- Direct Lighting
  - TH
  - LFL
  - HPD2
  - HPD
  - LDM2
  - LAV
  - PDM
  - LFX2
  - LFX3
  - LFX2
- Diffused Lighting
  - MSU
  - MFU
- Colimated Lighting
  - UV2
  - UV
  - LNSP-UV-FN
- Ultraviolet Lighting
  - IR2
- Infrared Lighting
  - HLV2
  - LV
  - LSP
  - HFS/HFR
  - HLV2-NR
  - HLV2-3M-RGB-3W
  - PFB2
  - PFBR
- Spot Lighting, Etc.
  - LNSP
  - CU-LNSP
  - LNSP-FN
  - LN/LN-HK
- Convergent Lighting
  - LNSD
  - LND2
  - HLND
  - LT
  - LNV/HLDN
- Diffused Lighting
  - LNIS
- Oblique Angled Lighting
  - LNIS-FN
- Lenses
  - Telecentric Lens
  - Macro Lens

# LDL2 series



Refer to our website for product details.

CCS LDL2

Search



You can also use your smartphone or cell phone.

Use a search engine.

## Lineup (Standard Products) \* End of the model name: -WD: Wide type

Model name	LED color	Emitting surface size	Power consumption	Peak wavelength/ correlated color temperature	Options	Recommended Control Units	Weight			
LDL2-275X16RD (-WD)	Red	275×16 mm	24 V / 14 W	635 nm	Please inquire for more information.	PD3	195 g			
LDL2-275X16SW (-WD)	White			6,600 K						
LDL2-275X16BL (-WD)	Blue			470 nm						
LDL2-275X16GR (-WD)	Green			525 nm						
LDL2-314X16RD (-WD)	Red	314×16 mm	24 V / 16 W	635 nm		PSB	PTU2	220 g		
LDL2-314X16SW (-WD)	White			6,600 K						
LDL2-314X16BL (-WD)	Blue			470 nm						
LDL2-314X16GR (-WD)	Green			525 nm						
LDL2-353X16RD (-WD)	Red	353×16 mm	24 V / 18 W	635 nm		Please inquire for more information.	PD3	245 g		
LDL2-353X16SW (-WD)	White			6,600 K						
LDL2-353X16BL (-WD)	Blue			470 nm						
LDL2-353X16GR (-WD)	Green			525 nm						
LDL2-392X16RD (-WD)	Red	392×16 mm	24 V / 19 W	635 nm			Please inquire for more information.	PSB	270 g	
LDL2-392X16SW (-WD)	White			6,600 K						
LDL2-392X16BL (-WD)	Blue			470 nm						
LDL2-392X16GR (-WD)	Green			525 nm						
LDL2-431X16RD (-WD)	Red	431×16 mm	24 V / 21 W	635 nm	Please inquire for more information.			PD3	295 g	
LDL2-431X16SW (-WD)	White			6,600 K						
LDL2-431X16BL (-WD)	Blue			470 nm						
LDL2-431X16GR (-WD)	Green			525 nm						
LDL2-470X16RD (-WD)	Red	470×16 mm	24 V / 23 W	635 nm				Please inquire for more information.	PSB	320 g
LDL2-470X16SW (-WD)	White			6,600 K						
LDL2-470X16BL (-WD)	Blue			470 nm						
LDL2-470X16GR (-WD)	Green			525 nm						
LDL2-509X16RD (-WD)	Red	509×16 mm	24 V / 25 W	635 nm		Please inquire for more information.			PSB	345 g
LDL2-509X16SW (-WD)	White			6,600 K						
LDL2-509X16BL (-WD)	Blue			470 nm						
LDL2-509X16GR (-WD)	Green			525 nm						
LDL2-26X30RD (-WD)	Red	26×30 mm	24 V / 1.9 W	635 nm			Please inquire for more information.		PD3	55 g
LDL2-26X30SW (-WD)	White			6,600 K						
LDL2-26X30BL (-WD)	Blue			470 nm						
LDL2-26X30GR (-WD)	Green		525 nm							
LDL2-50X30RD (-WD)	Red	50×30 mm	24 V / 3.8 W	635 nm	Please inquire for more information.				CC-ST-1024	80 g
LDL2-50X30SW (-WD)	White			6,600 K						
LDL2-50X30BL (-WD)	Blue			470 nm						
LDL2-50X30GR (-WD)	Green			525 nm						
LDL2-98X30RD (-WD)	Red	98×30 mm	24 V / 7.6 W	635 nm				Please inquire for more information.	PSB	125 g
LDL2-98X30SW (-WD)	White			6,600 K						
LDL2-98X30BL (-WD)	Blue			470 nm						
LDL2-98X30GR (-WD)	Green			525 nm						
LDL2-122X30RD (-WD)	Red	122×30 mm	24 V / 9.5 W	635 nm		Please inquire for more information.			PSB	150 g
LDL2-122X30SW (-WD)	White			6,600 K						
LDL2-122X30BL (-WD)	Blue			470 nm						
LDL2-122X30GR (-WD)	Green			525 nm						
LDL2-170X30RD (-WD)	Red	170×30 mm	24 V / 14 W	635 nm			Please inquire for more information.		PD3	200 g
LDL2-170X30SW (-WD)	White			6,600 K						
LDL2-170X30BL (-WD)	Blue			470 nm						
LDL2-170X30GR (-WD)	Green			525 nm						

Extension Cables ▶ P.222

Control Unit Selection Guide ▶ P.181

Control Unit Page ▶ P.185

- LDR2
- LDR2-LA
- LDR-LA1
- SQR
- SQR-TP
- HLDR-IP
- HPR2
- HPR
- LFR
- LKR
- FPR
- FPQ2
- LDL2**
- LDLB
- HLDL2
- TH
- LFL
- HPD2
- HPD
- LDM2
- LAV
- PDM
- LFX2
- LFV3
- LFV2
- MSU
- MFU
- UV2
- UV
- LNSP-UV-FN
- IR2
- HLV2
- LV
- LSP
- HFS/HFR
- HLV2-NR
- HLV2-3M-RGB-3W
- PFB2
- PFBR
- LNSP
- CU-LNSP
- LNSP-FN
- LN/LN-HK
- LNSD
- LND2
- HLND
- LT
- LNW/HLDN
- LNIS
- LNIS-FN
- Telecentric Lens
- Macro Lens

We have various materials.

- PDF Drawings
- DXF Drawings
- 3D CAD
- Instruction Guides
- Product Filers
- Imaging Samples
- Data Sheets
- Examples of Custom Ordered Products

Download here. <http://www.ccs-grp.com/dl/>



\* End of the model name: -WD: Wide type

Model name	LED color	Emitting surface size	Power consumption	Peak wavelength/ correlated color temperature	Options	Recommended Control Units	Weight
LDL2-194X30RD (-WD)	Red	194×30mm	24 V / 16 W	635 nm	Please inquire for more information.	<div style="display: flex; flex-wrap: wrap; gap: 5px;"> <div style="border: 1px solid black; padding: 2px;">PD3</div> <div style="border: 1px solid black; padding: 2px;">PSB</div> <div style="border: 1px solid black; padding: 2px;">PTU2</div> </div>	225 g
LDL2-194X30SW (-WD)	White			6,600 K			
LDL2-194X30BL (-WD)	Blue			470 nm			
LDL2-194X30GR (-WD)	Green			525 nm			
LDL2-242X30RD (-WD)	Red	242×30mm	24 V / 19 W	635 nm			
LDL2-242X30SW (-WD)	White			6,600 K			
LDL2-242X30BL (-WD)	Blue			470 nm			
LDL2-242X30GR (-WD)	Green			525 nm			
LDL2-290X30RD (-WD)	Red	290×30mm	24 V / 23 W	635 nm			
LDL2-290X30SW (-WD)	White			6,600 K			
LDL2-290X30BL (-WD)	Blue			470 nm			
LDL2-290X30GR (-WD)	Green			525 nm			
LDL2-314X30RD (-WD)	Red	314×30mm	24 V / 25 W	635 nm			
LDL2-314X30SW (-WD)	White			6,600 K			
LDL2-314X30BL (-WD)	Blue			470 nm			
LDL2-314X30GR (-WD)	Green			525 nm			
LDL2-338X30RD (-WD)	Red	338×30mm	24 V / 27 W	635 nm			
LDL2-338X30SW (-WD)	White			6,600 K			
LDL2-338X30BL (-WD)	Blue			470 nm			
LDL2-338X30GR (-WD)	Green			525 nm			
LDL2-362X30RD (-WD)	Red	362×30mm	24 V / 29 W	635 nm			
LDL2-362X30SW (-WD)	White			6,600 K			
LDL2-362X30BL (-WD)	Blue			470 nm			
LDL2-362X30GR (-WD)	Green			525 nm			
LDL2-386X30RD (-WD)	Red	386×30mm	24 V / 31 W	635 nm			
LDL2-386X30SW (-WD)	White			6,600 K			
LDL2-386X30BL (-WD)	Blue			470 nm			
LDL2-386X30GR (-WD)	Green			525 nm			
LDL2-410X30RD (-WD)	Red	410×30mm	24 V / 33 W	635 nm			
LDL2-410X30SW (-WD)	White			6,600 K			
LDL2-410X30BL (-WD)	Blue			470 nm			
LDL2-410X30GR (-WD)	Green			525 nm			
LDL2-434X30RD (-WD)	Red	434×30mm	24 V / 35 W	635 nm			
LDL2-434X30SW (-WD)	White			6,600 K			
LDL2-434X30BL (-WD)	Blue			470 nm			
LDL2-434X30GR (-WD)	Green			525 nm			
LDL2-458X30RD (-WD)	Red	458×30mm	24 V / 37 W	635 nm			
LDL2-458X30SW (-WD)	White			6,600 K			
LDL2-458X30BL (-WD)	Blue			470 nm			
LDL2-458X30GR (-WD)	Green			525 nm			
LDL2-482X30RD (-WD)	Red	482×30mm	24 V / 38 W	635 nm			
LDL2-482X30SW (-WD)	White			6,600 K			
LDL2-482X30BL (-WD)	Blue			470 nm			
LDL2-482X30GR (-WD)	Green			525 nm			
LDL2-506X30RD (-WD)	Red	506×30mm	24 V / 40 W	635 nm			
LDL2-506X30SW (-WD)	White			6,600 K			
LDL2-506X30BL (-WD)	Blue			470 nm			
LDL2-506X30GR (-WD)	Green			525 nm			

Emitting width: 30 mm

Extension Cables ▶ P.222

Control Unit Selection Guide ▶ P.181

Control Unit Page ▶ P.185

Direct Lighting

Convergent Lighting

Diffused Lighting

Direct Lighting

Convergent Lighting

Diffused Lighting

Direct Lighting

Diffused Lighting

Colimated Lighting

Ultraviolet Lighting

Infrared Lighting

Spot Lighting, Etc.

Convergent Lighting

Diffused Lighting

Oblique Angled Lighting

Lenses

Lenses

Lenses

Lenses

Lenses

Lenses

Lenses

Lenses

Lenses

Lenses

You can inquire using  
our website.Requests for  
Light Unit  
SelectionRequests for  
Loan  
ProductsRequests for  
EstimatesRequests for  
a CatalogProduct  
InquiriesOther  
InquiriesInquire on our website here.  
<http://www.ccs-grp.com/contact/>

# LDL2 series



Refer to our website for product details.

CCS LDL2

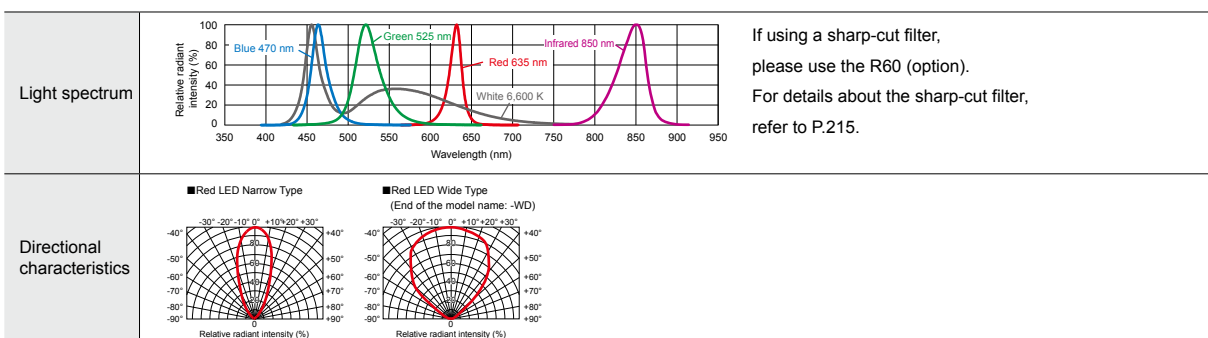
Search



You can also use your smartphone or cell phone.

Use a search engine.

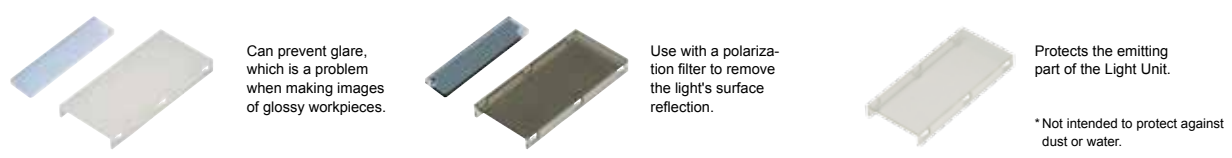
## LED properties



If using a sharp-cut filter, please use the R60 (option). For details about the sharp-cut filter, refer to P.215.

Be sure to read the "Instruction Guide" included with the product before use and observe cautionary information. The data included is for reference only and does not guarantee the quality of this product.

## Options



### Diffusion plate

Model name	Applicable Light Unit (Common for all colors)
DF-LDL2-33X8	LDL2-33X8
DF-LDL2-41X16	LDL2-41X16/LDL2-41X16-WD
DF-LDL2-80X16	LDL2-80X16/LDL2-80X16-WD
DF-LDL2-119X16	LDL2-119X16/LDL2-119X16-WD
DF-LDL2-74X30	LDL2-74X30/LDL2-74X30-WD
DF-LDL2-146X30	LDL2-146X30/LDL2-146X30-WD
DF-LDL2-218X30	LDL2-218X30/LDL2-218X30-WD
DF-LDL2-266X30	LDL2-266X30/LDL2-266X30-WD

▶ P.216

### Polarization plate

Model name	Applicable Light Unit (Common for all colors)
PL-LDL2-33X8-HO	LDL2-33X8
PL-LDL2-33X8-VE	LDL2-33X8
PL-LDL2-41X16	LDL2-41X16/LDL2-41X16-WD
PL-LDL2-41X16-VE	LDL2-41X16/LDL2-41X16-WD
PL-LDL2-80X16	LDL2-80X16/LDL2-80X16-WD
PL-LDL2-80X16-VE	LDL2-80X16/LDL2-80X16-WD
PL-LDL2-119X16	LDL2-119X16/LDL2-119X16-WD
PL-LDL2-119X16-VE	LDL2-119X16/LDL2-119X16-WD
PL-LDL2-74X30	LDL2-74X30/LDL2-74X30-WD
PL-LDL2-74X30-VE	LDL2-74X30/LDL2-74X30-WD
PL-LDL2-146X30	LDL2-146X30/LDL2-146X30-WD
PL-LDL2-146X30-VE	LDL2-146X30/LDL2-146X30-WD
PL-LDL2-218X30	LDL2-218X30/LDL2-218X30-WD
PL-LDL2-218X30-VE	LDL2-218X30/LDL2-218X30-WD
PL-LDL2-266X30	LDL2-266X30/LDL2-266X30-WD
PL-LDL2-266X30-VE	LDL2-266X30/LDL2-266X30-WD

▶ P.217

\* There are two kinds of polarization plates: the HO and the VE. For details, refer to P. 183.

### Protective panel

Model name	Applicable Light Unit (Common for all colors)
CV-LDL2-41X16	LDL2-41X16/LDL2-41X16-WD
CV-LDL2-80X16	LDL2-80X16/LDL2-80X16-WD
CV-LDL2-119X16	LDL2-119X16/LDL2-119X16-WD
CV-LDL2-74X30	LDL2-74X30/LDL2-74X30-WD
CV-LDL2-146X30	LDL2-146X30/LDL2-146X30-WD
CV-LDL2-218X30	LDL2-218X30/LDL2-218X30-WD
CV-LDL2-266X30	LDL2-266X30/LDL2-266X30-WD

▶ P.221



You can freely adjust the illuminating angle when affixing the Light Unit. Various kinds of illumination are possible depending on the affixing method, such as illumination from two or four directions.

### Bracket

Model name	Note
BK-LDL2	Angle adjustment bracket common for the LDL2 series (x2)

▶ P.219



You can freely adjust the illuminating angle when affixing the Light Unit. Various kinds of illumination are possible depending on the affixing method, such as illumination from two or four directions.

### Bracket

Model name	Note
BK-LDQ2-33X8	Bracket that can install four of the LDL2-33X8

▶ P.219



You can freely adjust the illuminating angle when affixing the Light Unit. Various kinds of illumination are possible depending on the affixing method, such as illumination from two or four directions.

### Bracket

Model name	Note
BK-LDQ2-41X16	Bracket that can install four of the LDL2-41X16
BK-LDQ2-80X16	Bracket that can install four of the LDL2-80X16
BK-LDQ2-119X16	Bracket that can install four of the LDL2-119X16
BK-LDQ2-74X30	Bracket that can install four of the LDL2-74X30
BK-LDQ2-146X30	Bracket that can install four of the LDL2-146X30
BK-LDQ2-218X30	Bracket that can install four of the LDL2-218X30
BK-LDQ2-266X30	Bracket that can install four of the LDL2-266X30

▶ P.219

We have various materials.

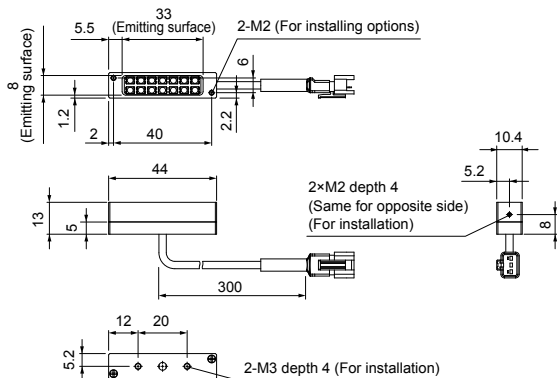
- PDF Drawings
- DXF Drawings
- 3D CAD
- Instruction Guides
- Product Filers
- Imaging Samples
- Data Sheets
- Examples of Custom Ordered Products

Download here. <http://www.ccs-grp.com/dl/>

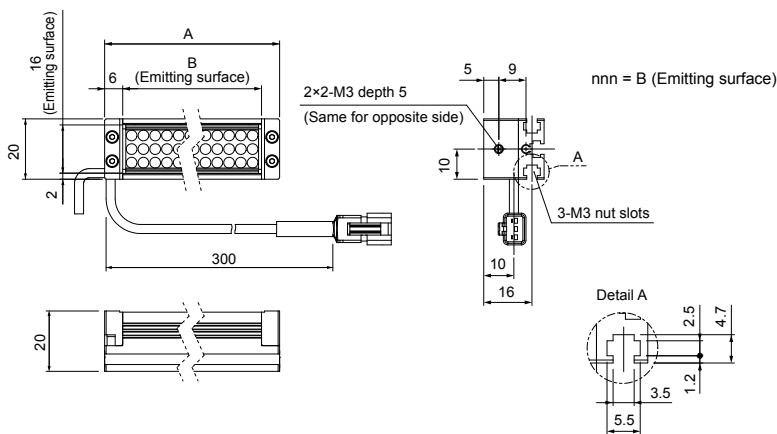
Direct Lighting	LDR2
Direct Lighting	LDR2-LA
Direct Lighting	LDR-LA1
Direct Lighting	SQR
Direct Lighting	SQR-TP
Convergent Lighting	HLDR-IP
Diffused Lighting	HPR2
Diffused Lighting	HPR
Diffused Lighting	LFR
Diffused Lighting	LKR
Diffused Lighting	FPR
Diffused Lighting	FPQ2
Direct Lighting	<b>LDL2</b>
Direct Lighting	LDLB
Direct Lighting	HLDL2
Direct Lighting	TH
Direct Lighting	LFL
Direct Lighting	HPD2
Diffused Lighting	HPD
Diffused Lighting	LDM2
Diffused Lighting	LAV
Diffused Lighting	PDM
Diffused Lighting	LFX2
Diffused Lighting	LFV3
Diffused Lighting	LFV2
Colimated Lighting	MSU
Colimated Lighting	MFU
Ultraviolet Lighting	UVV
Ultraviolet Lighting	UV
Ultraviolet Lighting	LNSP-UV-FN
Infrared Lighting	IR2
Spot Lighting, Etc.	HLV2
Spot Lighting, Etc.	LV
Spot Lighting, Etc.	LSP
Spot Lighting, Etc.	HFS/HFR
Spot Lighting, Etc.	HLV2-NR
Spot Lighting, Etc.	HLV2-3M-RGB-3W
Spot Lighting, Etc.	PFB2
Spot Lighting, Etc.	PFBR
Convergent Lighting	LNSP
Convergent Lighting	CU-LNSP
Convergent Lighting	LNSP-FN
Convergent Lighting	LN/LN-HK
Diffused Lighting	LNSD
Diffused Lighting	LND2
Diffused Lighting	HLND
Diffused Lighting	LT
Diffused Lighting	LVN/HLDN
Oblique Angled Lighting	LNIS
Oblique Angled Lighting	LNIS-FN
Lenses	Telecentric Lens
Lenses	Macro Lens

## ► Dimensions (mm)

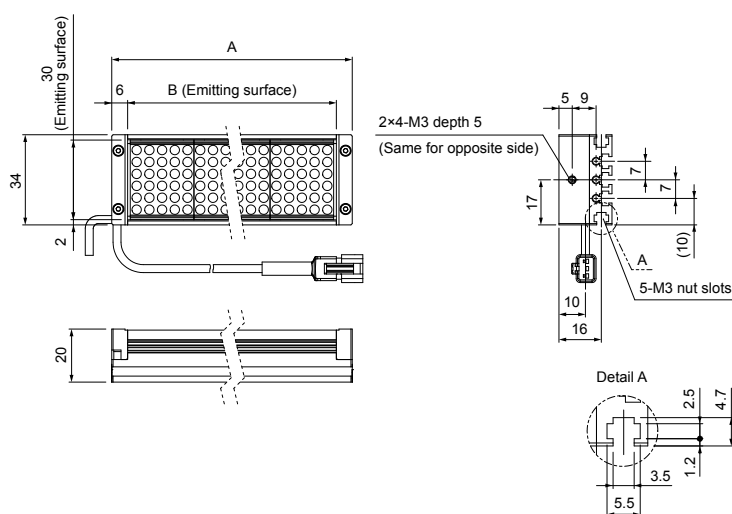
For the LDL2-33X8RD/SW/BL/GR/IR850



For the LDL2-*nnn*X16RD/SW/BL/GR



For the LDL2-*nnn*X30RD/SW/BL/GR



Standard product

Model name	A	B
LDL2-41X16RD/SW/BL/GR	53	41
LDL2-80X16RD/SW/BL/GR	92	80
LDL2-119X16RD/SW/BL/GR	131	119

Special order

Model name	A	B
LDL2-158X16RD/SW/BL/GR	170	158
LDL2-197X16RD/SW/BL/GR	209	197
LDL2-236X16RD/SW/BL/GR	248	236
LDL2-275X16RD/SW/BL/GR	287	275
LDL2-314X16RD/SW/BL/GR	326	314
LDL2-353X16RD/SW/BL/GR	365	353
LDL2-392X16RD/SW/BL/GR	404	392
LDL2-431X16RD/SW/BL/GR	443	431
LDL2-470X16RD/SW/BL/GR	482	470
LDL2-509X16RD/SW/BL/GR	521	509

The Wide Type (-WD) is the same size.

Standard product

Model name	A	B
LDL2-74X30RD/SW/BL/GR	86	74
LDL2-146X30RD/SW/BL/GR	158	146
LDL2-218X30RD/SW/BL/GR	230	218
LDL2-266X30RD/SW/BL/GR	278	266

Special order

Model name	A	B
LDL2-26X30RD/SW/BL/GR	38	26
LDL2-50X30RD/SW/BL/GR	62	50
LDL2-98X30RD/SW/BL/GR	110	98
LDL2-122X30RD/SW/BL/GR	134	122
LDL2-170X30RD/SW/BL/GR	182	170
LDL2-194X30RD/SW/BL/GR	206	194
LDL2-242X30RD/SW/BL/GR	254	242
LDL2-290X30RD/SW/BL/GR	302	290
LDL2-314X30RD/SW/BL/GR	326	314
LDL2-338X30RD/SW/BL/GR	350	338
LDL2-362X30RD/SW/BL/GR	374	362
LDL2-386X30RD/SW/BL/GR	398	386
LDL2-410X30RD/SW/BL/GR	422	410
LDL2-434X30RD/SW/BL/GR	446	434
LDL2-458X30RD/SW/BL/GR	470	458
LDL2-482X30RD/SW/BL/GR	494	482
LDL2-506X30RD/SW/BL/GR	518	506

The Wide Type (-WD) is the same size.

You can change the connectors of the Light Unit cable. Choose between M12 connectors and flying leads. Refer to P.125 for details.

You can inquire using  
our website.

Requests for  
Light Unit  
Selection

Requests for  
Loan  
Products

Requests for  
Estimates

Requests for  
a Catalog

Product  
Inquiries

Other  
Inquiries

Inquire on our website here.  
<http://www.ccs-grp.com/contact/>