

Ring Lights (waterproof type) HLDR-IP series

Refer to our website for product details.

CCS HLDR-IP

Search



You can also use your smartphone or cell phone.

Use a search engine.

Provides diffused light converged by a lens

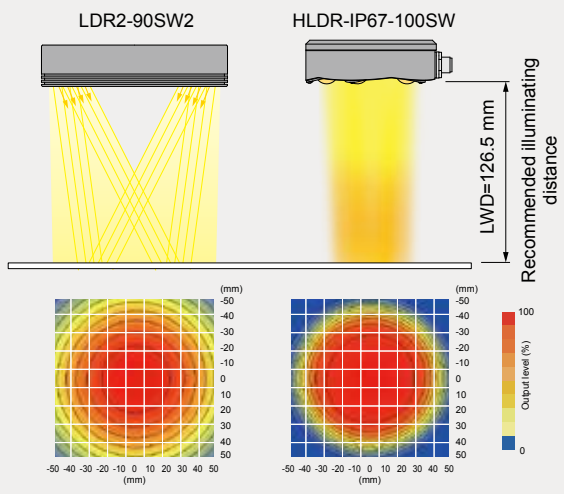


Applications Fault inspection for metal parts, visual inspection for rubber parts, visual inspection for resin parts, and adhesive application inspection for food containers (UV), etc.

Achieves convergent illumination

The HLDR-IP series features convergent Ring Lights that ensure brightness with a convergent lens.

Comparison of illumination between a Ring Light and the HLDR-IP series



IP67 compliant

It has a waterproof and rustproof structure for use in harsh environments. Optimal for sites where manufacturing lines must be cleaned, such as for food and chemicals.

Waterproof Ring Light HLDR-IP series

- Convergent Ring Light
- Emitted color: Red, white, UV (365 nm)
- IP67 compliant
- Uses an M12 connector

Uses an M12 connector

- Dedicated waterproof cable

Control Unit side (SM connector)

Connect the cable to the Light Unit to prevent water or dust from entering.

Custom orders

Please contact your CCS sales representative.
E.g.: Changed the illuminating angle

Customizable items

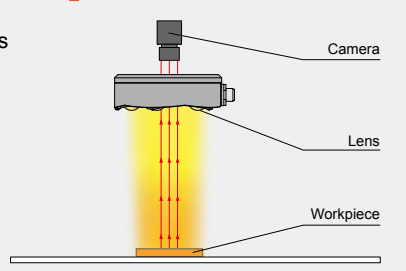
- External/internal diameter
- Wavelength/color
- Increase output
- Cable length
- Illuminating angle
- Format/material
- Connector format
- Installation/mounting

Etc.

Example configuration

Convergent waterproof Ring Light that ensures brightness with a convergent lens.

HLDR-IP67-100



LDR2	Direct Lighting
LDR2-LA	Direct Lighting
LDR-LA1	Direct Lighting
SQR	Direct Lighting
SQR-TP	Direct Lighting
HLDR-IP	Convergent Lighting
HPR2	Convergent Lighting
HPR	Convergent Lighting
LFR	Diffused Lighting
LKR	Diffused Lighting
FPR	Diffused Lighting
FPQ2	Diffused Lighting
LDL2	Direct Lighting
LDLB	Direct Lighting
HLDL2	Direct Lighting
TH	Direct Lighting
LFL	Direct Lighting
HPD2	Diffused Lighting
HPD	Diffused Lighting
LDM2	Diffused Lighting
LAV	Diffused Lighting
PDM	Diffused Lighting
LFX2	Diffused Lighting
LFV3	Diffused Lighting
LFV2	Diffused Lighting
MSU	Collimated Lighting
MFU	Collimated Lighting
UV2	Ultraviolet Lighting
UV	Ultraviolet Lighting
LNSP-UV-FN	Ultraviolet Lighting
IR2	Infrared Lighting
HLV2	Spot Lighting, Etc.
LV	Spot Lighting, Etc.
LSP	Spot Lighting, Etc.
HFS/HFR	Spot Lighting, Etc.
HLV2-NR	Spot Lighting, Etc.
HLV2-3M-RGB-3W	Spot Lighting, Etc.
PFB2	Convergent Lighting
PFBR	Convergent Lighting
LNSP	Convergent Lighting
CU-LNSP	Convergent Lighting
LNSP-FN	Convergent Lighting
LN/LN-HK	Convergent Lighting
LNSD	Diffused Lighting
LND2	Diffused Lighting
HLND	Diffused Lighting
LT	Diffused Lighting
LNW/HLDN	Diffused Lighting
LNIS	Oblique Angled Lighting
LNIS-FN	Oblique Angled Lighting
Telecentric Lens	Lenses
Macro Lens	Lenses

We have various materials.

- PDF Drawings
- DXF Drawings
- 3D CAD
- Instruction Guides
- Product Filers
- Imaging Samples
- Data Sheets
- Examples of Custom Ordered Products

Download here. <http://www.ccs-grp.com/dl/>

Regarding recommended distance

The data included is for reference only and does not guarantee the quality of this product.

Convergent illumination image



LWD
0 mm
* Bottom of housing as reference

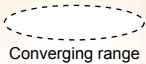
Recommended distance

126.5 mm
±10 mm

116.5 mm

126.5 mm

136.5 mm

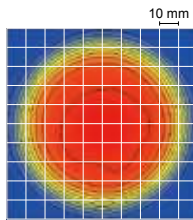


Converging range

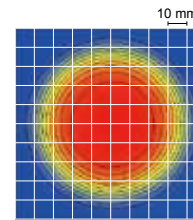
Red Approximately \varnothing 40 mm
White Approximately \varnothing 35 mm
Ultraviolet Approximately \varnothing 40 mm

LWD=116.5 mm

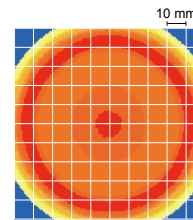
Illuminance
Approximately **59,000 lx**
Red



Illuminance
Approximately **138,000 lx**
White



Irradiance
20.4 mW/cm²
Ultraviolet

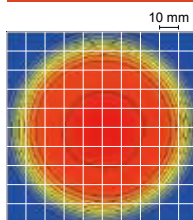


* The values for red and white are measured values.
This does not guarantee product quality.

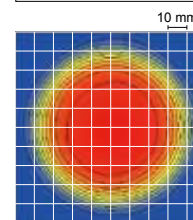
* Values are simulated for UV.
This does not guarantee product quality.

LWD=126.5 mm

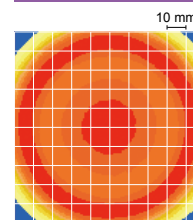
Illuminance
Approximately **53,000 lx**
Red



Illuminance
Approximately **124,000 lx**
White



Irradiance
18.6 mW/cm²
Ultraviolet

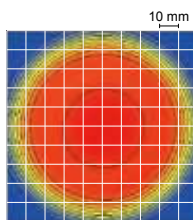


* The values for red and white are measured values.
This does not guarantee product quality.

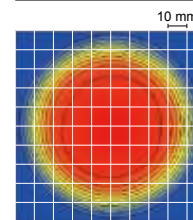
* Values are simulated for UV.
(These values are not guaranteed.)

LWD=136.5 mm

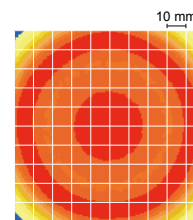
Illuminance
Approximately **47,000 lx**
Red



Illuminance
Approximately **113,000 lx**
White

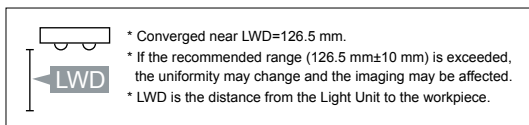


Irradiance
16.8 mW/cm²
Ultraviolet



* The values for red and white are measured values.
This does not guarantee product quality.

* Values are simulated for UV.
This does not guarantee product quality.



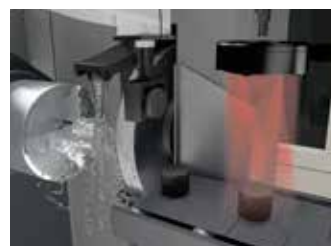
Safe to use when washing manufacturing lines

When washing
manufacturing lines



Food, chemicals, etc.

For manufacturing lines that
use water



Automotive parts, etc.

You can inquire using
our website.

Requests for
Light Unit
Selection

Requests for
Loan
Products

Requests for
Estimates

Requests for
a Catalog

Product
Inquiries

Other
Inquiries

Inquire on our website here.
<http://www.ccs-grp.com/contact/>

HLDR-IP series



Refer to our website for product details.

CCS HLDR-IP

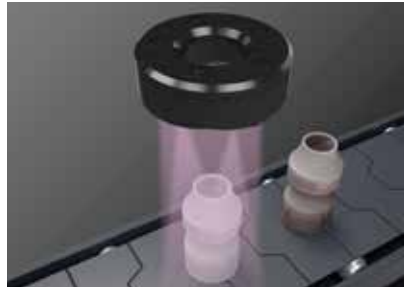
Search



You can also use your smartphone or cell phone.

Use a search engine.

Imaging example : Fluorescent observation of adhesive on a plastic container



Description	Application inspection for adhesive
Workpiece	Plastic container
Before the proposal	LED visible light lighting
After the proposal	HLDR-IP67-100UV2-365
Result	Only detects the adhesive

Workpiece image



Plastic container

LED visible light lighting



It was difficult to detect the application of the adhesive using visible light lighting.

HLDR-IP67-100UV2-365



Only the adhesive causes fluorescent scattering, allowing for an image of the application status.

Lineup

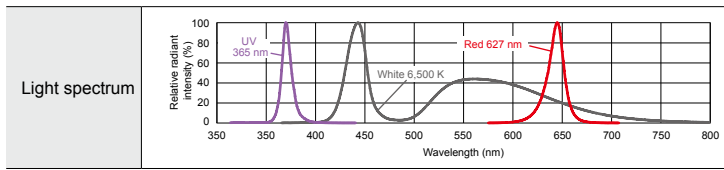
Model name	LED color	Power consumption	Peak wavelength/ correlated color temperature	Options	Recommended Control Units	Weight
HLDR-IP67-100RD	Red	24 V / 18 W	627 nm	- Ultraviolet cutting filter Ultraviolet transmission filter	PD3 PSB	420 g
HLDR-IP67-100SW	White		6,500 K			
HLDR-IP67-100UV2-365	Ultraviolet		365 nm			

* Cannot be used in combination with a Strobe Control Unit (PTU2-3024, BB-V24S30-M, BB-V24S30-S). ON/OFF control is possible via the strobe mode or ON/OFF mode of the PD3 series, and continuous lighting Control Units (PD2 series, BB series, etc.).

Control Unit Selection Guide ▶ P.181

Control Unit Page ▶ P.185

LED properties



If using a sharp-cut filter, please use the R60 (option). For details about the sharp-cut filter, refer to P.215.

Be sure to read the "Instruction Guide" included with the product before use and observe cautionary information. The data included is for reference only and does not guarantee the quality of this product.

Options



Blocks light with a wavelength of 420 nm or lower, transmits light with a longer wavelength.

Ultraviolet cutting filter L42 series

Model name	Size
L42-25	M25.5 P0.5
L42-27	M27.0 P0.5
L42-30	M30.5 P0.5
L42-40	M40.5 P0.5
L42-46	M46.0 P0.75

▶ P.215



Transmits ultraviolet light, absorbs visible light.

Ultraviolet transmission filter U340 series

Model name	Size
U340-25	M25.5 P0.5
U340-27	M27.0 P0.5
U340-30	M30.5 P0.5
U340-40	M40.5 P0.5
U340-46	M46.0 P0.75

▶ P.215

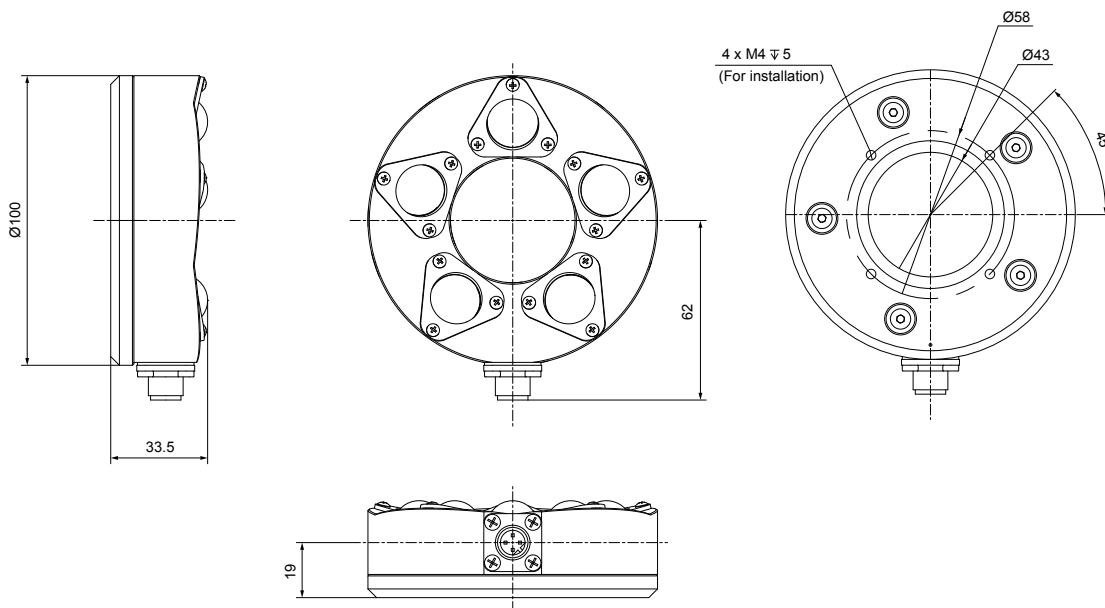
We have various materials.

- PDF Drawings
- DXF Drawings
- 3D CAD
- Instruction Guides
- Product Filters
- Imaging Samples
- Data Sheets
- Examples of Custom Ordered Products

Download here. <http://www.ccs-grp.com/dl/>

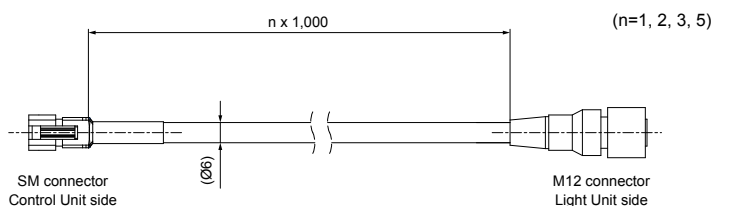
Dimensions (mm)

HLDR-IP67-100RD/SW/UV2-365



Dedicated cable

Model name	Cable length	Weight
FCB-1-M12	1 m	70 g
FCB-2-M12	2 m	125 g
FCB-3-M12	3 m	180 g
FCB-5-M12	5 m	305 g



* SM connectors are not waterproof.

* Cable permitted bending radius: 40 mm

Regarding case materials

	LED Light (Common for all colors)	Dedicated cable
Case material	Body: aluminum alloy (black anodized) Screws: SUS Washers: SUS, elastomer (TPE) Connectors: PA resin Lens: silicone	Light Unit side connector: soft PBT Cable: PVC Control Unit side connector: nylon

* Indicates the details for materials only regarding the external parts.

Note

"IP67" indicates the level of protection against foreign material entering electrical instruments

The 1st numeral "6" indicates the following level of protection:

- No dust inside the instrument. (dustproof)

The 2nd numeral "7" indicates the following level of protection:

- No damage when submerged in water at the rated pressure for the rated time. (watertight type)
- Can be submerged in water to a depth of 1 m (for instruments with a height of less than 850 mm) for 30 minutes.

Cautionary information regarding waterproofing

- After cleaning manufacturing lines, be sure to wipe away any moisture remaining on the lens.
Imaging can be affected by moisture on the lens.
- Use water to wash away any cleaning agent adhered to this product.
- Use water to wash away any oils or chemicals adhered to this product.
- The Control Unit connectors (SM connectors) on dedicated cables are not waterproof.

Cautionary information regarding UV products

- Do not expose your eyes or skin to direct UV irradiation.
- When using an UV illumination, be sure to wear UV blocking eye wear and avoid looking at irradiating parts (emitting parts).
- Do not turn on UV-LED irradiating parts (emitting parts) if they are facing someone's eyes.
- Wear long sleeves and gloves to protect your skin from UV irradiation.
- Thoroughly educate all those involved near the product about the dangers of UV LEDs.

(E.g.) UV blocking eye wear

