

High Efficiency Economic Backlight

Model#: FR-BL524X1123



- 2x brighter than Cold Cathode fluorescent.
- Better uniformity than Cold Cathode fluorescent (+/-5%).
- No warm up (time to reach full intensity).
- Low Power Consumption.
- No hot spots or glare.
- Patent pending technology.

Active Area

Length: 44.22" / 1123mm
 Width: 20.64" / 524mm

Dimensions

Length: 50.15" / 1273mm
 Width: 25.94" / 658mm
 Height: 1.12" / 28.57mm

Specifications:

Power Source	AC/DC Power Supply (85-265VAC ; 22-28V DC)
Current Output	2A
Finish	Black Anodized
Housing	Aluminum
Intensity Uniformity	+/-5%
Operating Temperature	120° F Max
Illuminance	15,000 Lux
Compliance	CE/RoHS
Lifetime Hours	75,000 Hours

Part

FR-BL524X1123-W

Color

White: 6000 K

ORDERING INFORMATION:

• F R - B L 5 2 4 X 1 1 2 3 -

W White 6000k

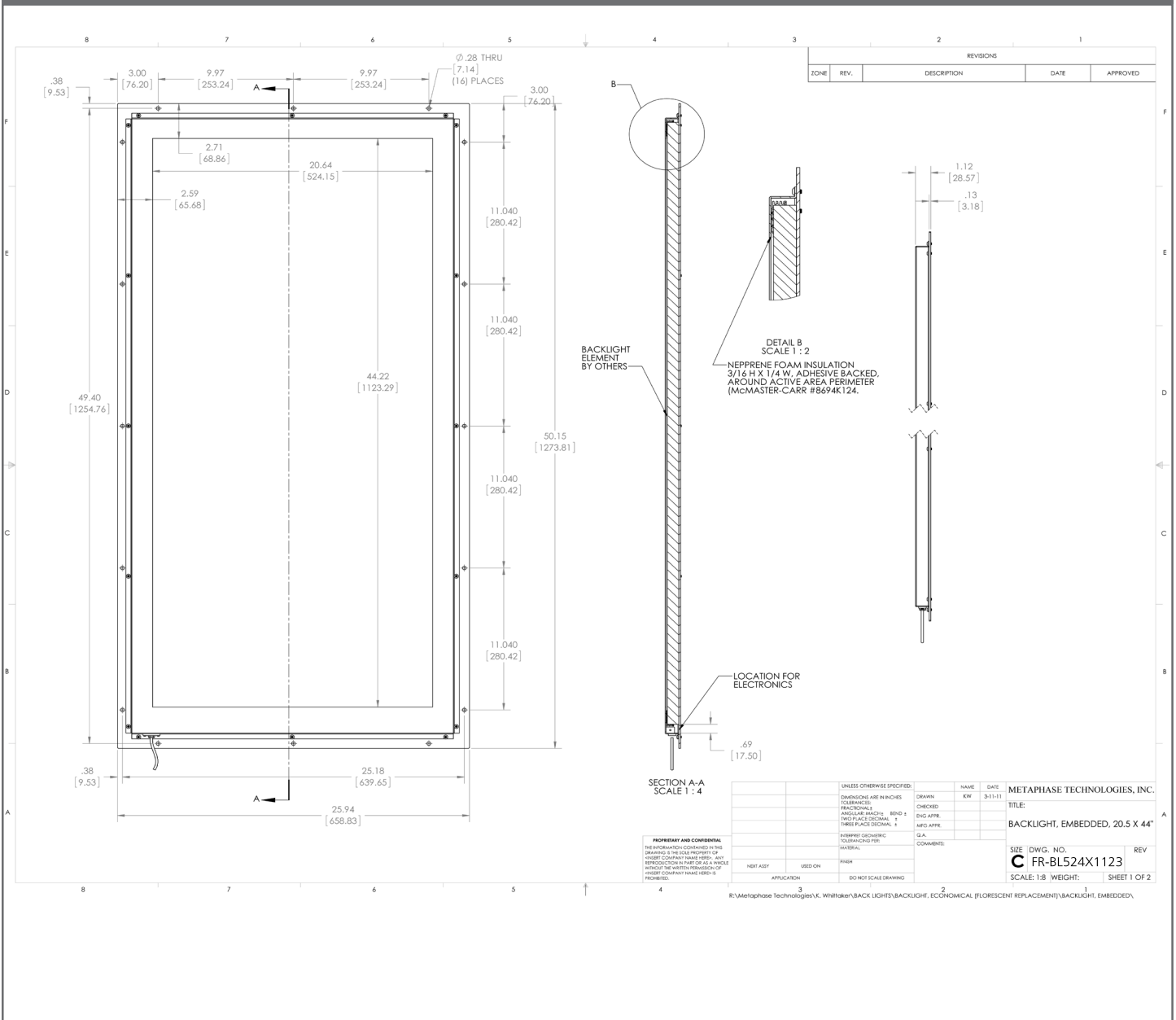
High Efficiency Economic Backlight

Model#: FR-BL524X1123



Vision Light Tech
creating optical solutions

Drawing/Diagram



Vision Light Tech B.V.

Protonenlaan 22, 5405 NE UDEN, P.O. Box 345, 5400 AH UDEN, The Netherlands

Phone: +31 (0)413 26 00 67, Fax +31 (0)413 26 09 38, E-mail: inquiry@vlt.nl, Website: www.vlt.nl

Trade register No. 17150044, VAT No. NL8112.30.946.B01