

LED

MetaBright™ LED Light Engine Model:MB-LE1007



Vision Light Tech
creating optical solutions



Metaphase Technologies MetaPhaser® LED MetaBright light engine with Super High Output are now available. Up to a 1400 % intensity improvement over 150 watt Halogen Hot Lights can now be achieved. Metaphase Technology Inc. sets a new performance benchmark with cool white LED intensities similar to a 250W Metal Halide light sources. The system is ideal for replacing older generation "hot light" fiber based illuminator systems and for green technology efficiency upgrade programs.

These systems are compact in size, economically priced, and very simple to operate. Each system is factory calibrated and pre-aligned for a corresponding nose piece adapter that ensures compatibility for new and retrofit fiber based light systems. No optical adjustments are required.

BENEFITS:

- Ideal for replacing older generation "hot light" fiber based illuminator systems
- Ideal for green technology efficiency upgrade programs
- Designed for fiber optics with light acceptance areas of 6° - 20° mm
- Can mechanically accept fiber optics with outer housing diameter up to 20° mm with Metaphase adaptor
- Digital-optical dimming control provides excellent color stability
- Similar to the brightness levels of 250° -watt metal halide fiber illuminator technology
- Long life-time ($75,000$ hours)
- Lower power consumption (less than 100 watts)
- 60° x less energy consumption than comparable "hot lights"
- Consistent color temperature during dimming and over time

APPLICATIONS:

- Microscopy
- Industrial Borescopes
- Inspection Systems
- Machine Vision
- High Speed QC
- Small Space Apps

RATINGS:



ELECTRICAL & CONTROLS:

Current Consumption	5A @ 12VDC
Light Intensity	+/-5%
Illuminance (DC Model)	6000 Lumens 1.7million Lux 2.2 Million Lux with optional Optical Condenser
Operating Temperature	-40°F(-45°) to 100°F (37.8°C)
Lifetime Hours	75,000 Hours

DOMINANT WAVELENGTH:

Part #	Color	Power Supply
MB-LE1007-W	White 5500K	Includes
MB-LE1007-R	Red 630nm	12 Volt Power Supply
MB-LE1007-B	Blue 470nm	
MB-LE1007-G	Green 530nm	

HOUSING:

Dimensions	Length: 12.01in / 305.1mm Width: 4.10in / 104.1mm Height: 7.15in / 181.7mm
Weight	4lb / 1814g
Housing	Aluminum
Finish	Pearl Night Blue

UNIT POWER SUPPLY:

PS1007 12VDC Power Supply Included with Purchase

Vision Light Tech B.V.

Protonenlaan 22, 5405 NE Uden, P.O. Box 345, 5400 AH Uden, The Netherlands

Phone: +31 (0)413 26 00 67, Fax: +31 (0)413 26 09 38, E-mail: info@vlt.nl, Website: www.vlt.nl

Trade register No. 17150044, VAT No. NL8112.30.946.B01



LED

MetaBright™ LED
Light Engine
Model:MB-LE1007



Vision Light Tech
creating optical solutions

SCREEN SHOTS:

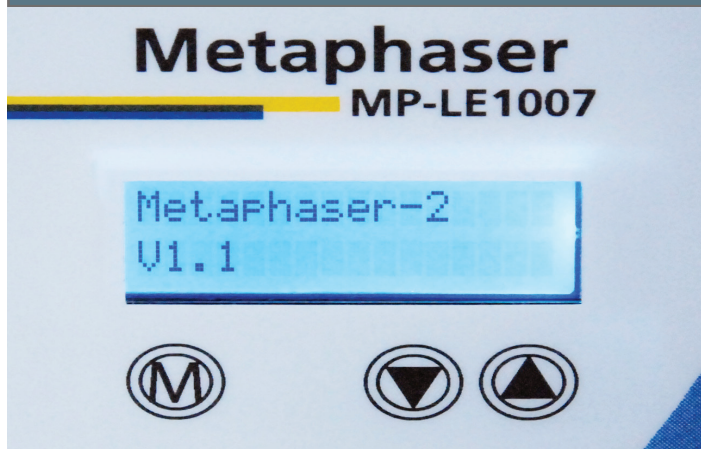
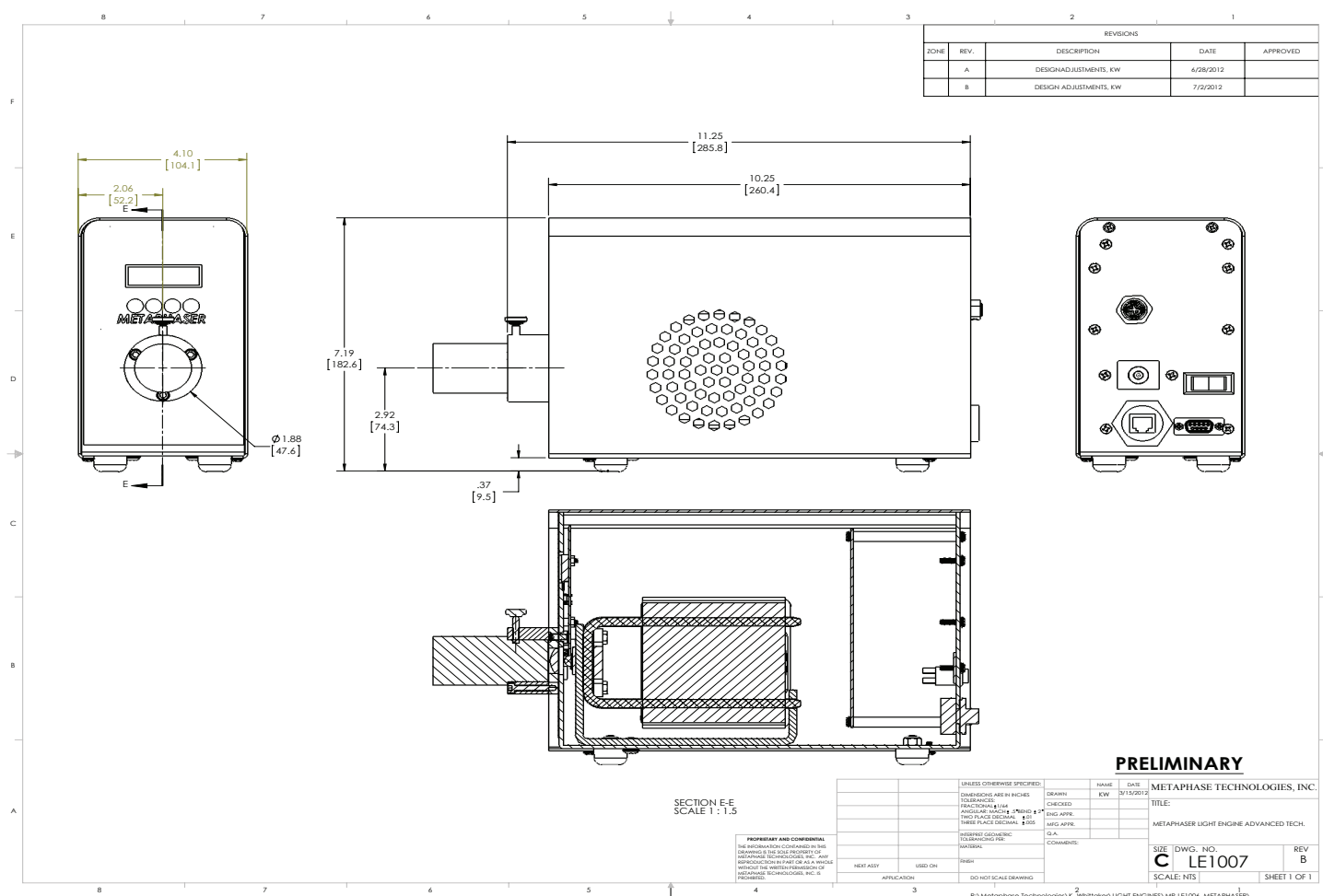


Image above shows the current Version of the MetaBOS Software and the initial launch screen.



This image displays menu to change the intensity of the Metaphaser using the up and down arrows. (0% - 100%)

DRAWING & DETAILS:



Vision Light Tech B.V.

Protonenlaan 22, 5405 NE Uden, P.O. Box 345, 5400 AH Uden, The Netherlands

Phone: +31 (0)413 26 00 67, Fax: +31 (0)413 26 09 38, E-mail: info@vlt.nl, Website: www.vlt.nl

Trade register No. 17150044, VAT No. NL8112.30.946.B01

