

# Dome Lights

## PDM series

Refer to our website for product details.

CCS PDM

Search



You can also use your smartphone or cell phone.

Use a search engine.

Provides diffused light evenly using a mechanism that combines a diffused lighting, coaxial lighting, and low-angle lighting



### Applications

Faulty plating inspection, inspection of a sealed target, inspection for foreign material attached to a glossy surface, character recognition and text inspection for glossy surfaces, and dimension measuring for electronic parts, etc.

Direct Lighting  
LDR2  
LDR2-LA  
LDR-LA1  
SQR  
SQR-TP

Convergent Lighting  
HLDR-IP

Diffused Lighting  
HPR2  
HPR  
LFR  
LKR  
FPR  
FPQ2

Direct Lighting  
LDL2  
LDLB  
HLDL2

Diffused Lighting  
TH  
LFL  
HPD2  
HPD  
LDM2  
LAV  
PDM  
LFX2  
LFX3  
LFX2

Collimated Lighting  
MSU  
MFU

Ultraviolet Lighting  
UV2  
UV  
LNSP-UV-FN

Infrared Lighting  
IR2

Spot Lighting, Etc.  
HLV2  
LV  
LSP  
HFS/HFR  
HLV2-NR  
HLV2-3M-RGB-3W  
PFB2  
PFBR

Convergent Lighting  
LNSP  
CU-LNSP  
LNSP-FN  
LN/LN-HK

Diffused Lighting  
LNSD  
LND2  
HLND  
LT  
LNV/HLDN

Oblique Angled Lighting  
LNIS

Lenses  
LNIS-FN  
Telecentric Lens  
Macro Lens

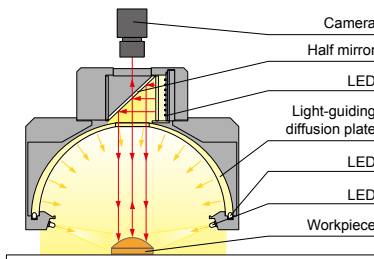
## Characteristics

This Light Unit combines the three types: dome lighting, low-angle lighting, and coaxial lighting. It illuminates the workpiece with uniform diffused light.

We accept custom orders. Please feel free to inquire.

- Change to format
- Increase brightness
- Change to wavelength, etc.

### Example configuration (PDM-150-15)

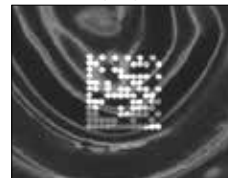


### Imaging example: 2-D code imaging



Workpiece: Contact lens package

### LED Ring Light



It is difficult to determine the 2-D code due to the glossy and wavy surface.

### PDM-150-15RD2



It is possible to determine the 2-D code by evenly illuminating the surface.

## Lineup

Model name	LED color	Power consumption	Peak wavelength/correlated color temperature	Options	Recommended Control Unit	Weight
PDM-150-15RD2	Red	24 V / 18 W	630 nm	-	PD3	1,140 g
PDM-150-15SW2	White	24 V / 22 W	5,500 K			1,170 g
PDM-150-15BL2	Blue		470 nm			1,140 g
PDM-150-15GR2	Green		525 nm			

\* Use a 3-channel Control Unit.

LED Properties: Light Spectrum ▶ P.234

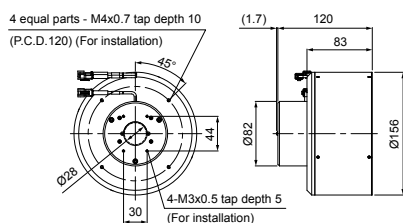
Extension Cables ▶ P.222

Control Unit Selection Guide ▶ P.181

Control Unit Page ▶ P.185

## Dimensions (mm)

PDM-150-15RD2/SW2/BL2/GR2



Illumination part	Power consumption
Coaxial illumination part	Red: 3.1 W, White: 2.2 W, Blue/Green: 2.7 W
Dome illumination part	Red: 10.2 W, White: 14 W, Blue/Green: 13 W
Low-angle illumination part	Red: 4.6 W, White/Blue/Green: 6.1 W

If adjusting the intensity for each part separately, use a 3-channel Control Unit.

You can change the connectors of the Light Unit cable. Choose between M12 connectors and flying leads. Refer to P.125 for details.

You can inquire using our website.

Requests for Light Unit Selection

Requests for Loan Products

Requests for Estimates

Requests for a Catalog

Product Inquiries

Other Inquiries

Inquire on our website here. <http://www.ccs-grp.com/contact/>