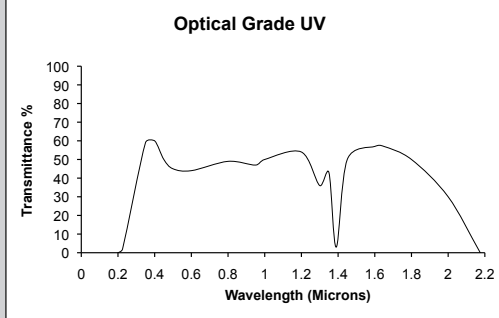
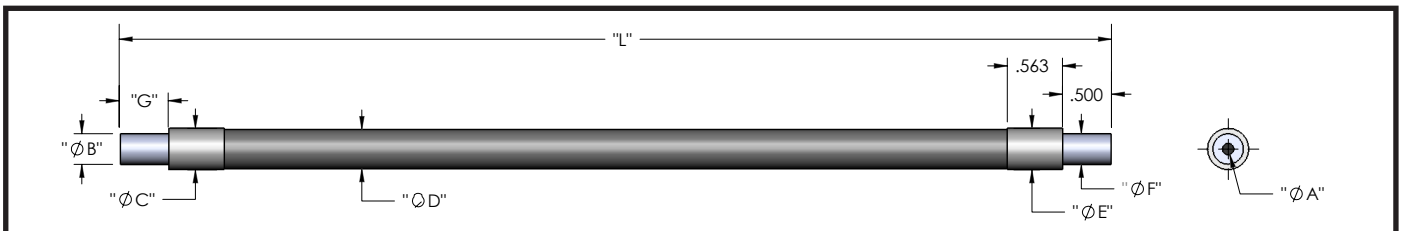


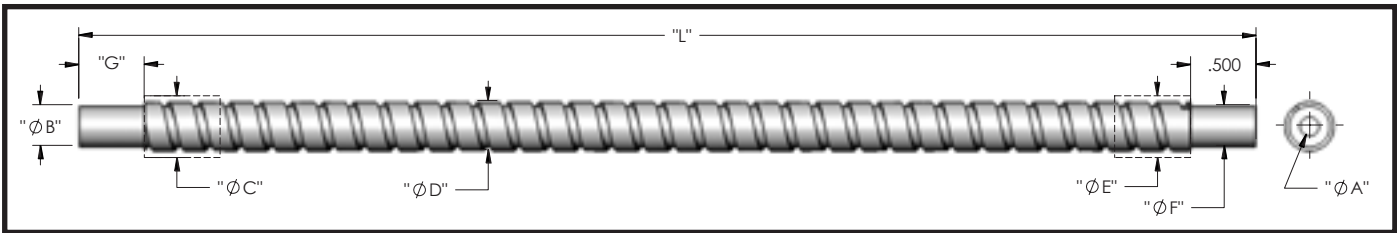
Optical Grade UV - Silica core/PCS clad

Spectral Curve	Specifications
	Individual Fiber Diameter
	Acceptance Cone
	Numerical Aperture
	Fiber Material
	Temperature capabilities
	Spectral Transmittance
	Minimum Bend Radius
	Maximum Breakage



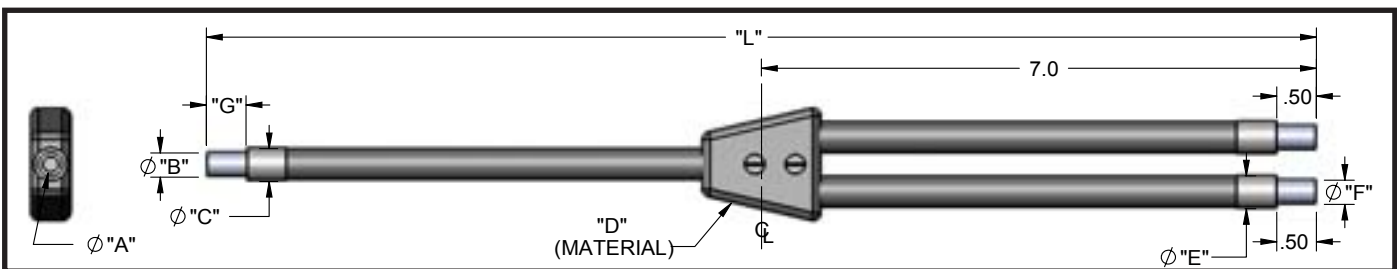
BUV - Standard End Ferrule, PVC Monocoil Sheathing, Rated for -40°F to 221°F

Model	Part #	A	B	C	D	E	F	G	L
BUV612	002012016012								12" (304.80 mm)
BUV624	002012016024								24" (609.60 mm)
BUV636	002012016036								36" (914.40 mm)
BUV648	002012016048	.062"	.187"	.205"	.190"	.205"	.187"	.50"	48" (1219.2 mm)
BUV660	002012016060	(1.59mm)	(4.75mm)	(5.2mm)	(4.8mm)	(5.2mm)	(4.75mm)	(12.7mm)	60" (1524.0 mm)
BUV672	002012016072								72" (1828.8 mm)
BUV696	002012016096								96" (2438.4 mm)
BUV806	002012018006								06" (152.4 mm)
BUV809	002012018009								09" (228.6 mm)
BUV810	002012018010								10" (254.0 mm)
BUV812	002012018012								12" (304.8 mm)
BUV824	002012018024								24" (609.6 mm)
BUV836	002012018036	.125"	.187"	.312"	.268"	.312"	.187"	.50"	36" (914.40 mm)
BUV848	002012018048	(3.18mm)	(4.75mm)	(7.92mm)	(6.81mm)	(7.92mm)	(4.75mm)	(12.7mm)	48" (1219.2 mm)
BUV860	002012018060								60" (1524.0 mm)
BUV872	002012018072								72" (1828.8 mm)
BUV874	002012018074								74" (1879.6 mm)
BUV884	002012018084								84" (2133.6 mm)
BUV896	002012018096								96" (2438.4 mm)
BUV412	002012014012								12" (304.8 mm)
BUV416	002012014016								16" (406.4 mm)
BUV424	002012014024	.250"	.312"	.468"	.430"	.468"	.312"	.50"	24" (609.60 mm)
BUV436	002012014036	(6.35mm)	(7.92mm)	(11.9mm)	(10.9mm)	(11.9mm)	(7.92mm)	(12.7mm)	36" (914.40 mm)
BUV460	002012014060								60" (1524.0 mm)
BUV472	002012014072								72" (1828.8 mm)



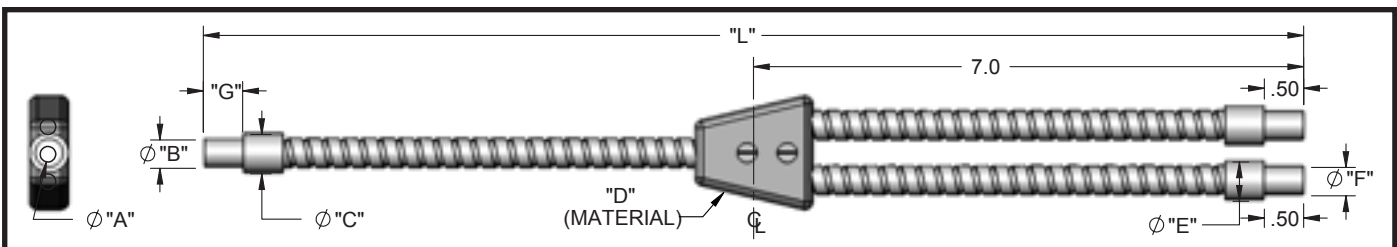
BXUV - Standard End Ferrule, Stainless Steel Sheathing, Rated for -40°F to 347°F

Model	Part #	A	B	C	D	E	F	G	L
BXUV624	002014016024	.062"	.187"	.286"	.203"	.286"	.187"	.50"	24" (609.60 mm)
BXUV636	002014016036	(1.59mm)	(4.75mm)	(7.23mm)	(5.15 mm)	(7.23mm)	(4.75mm)	(12.7mm)	36" (914.40 mm)
BXUV824	002014018024	.125"	.187"	.375"	.345"	.375"	.187"	.50"	24" (609.60 mm)
BXUV836	002014018036	(3.18mm)	(4.75mm)	(9.52mm)	(8.76mm)	(9.52mm)	(4.75mm)	(12.7mm)	36" (914.40 mm)
BXUV860	002014018060								60" (1524.0 mm)
BXUV424	002014014024	.250"	.312"	.615"	.560"	.615"	.312"	.50"	24" (609.60 mm)
BXUV436	002014014036	(6.35mm)	(7.92mm)	(15.6mm)	(14.22mm)	(15.6mm)	(7.92mm)	(12.7mm)	36" (914.40 mm)
BXUV460	002014014060								60" (1524.0 mm)



EUV - Standard End Ferrule, PVC Monocoil Sheathing, Rated for -40°F to 221°F

Model	Part #	A	B	C	D	E	F	G	L
EUV624	002022046024	.062"	.187"	.253"	PVC Heat Shrink	.205"	.187"	.50"	24" (609.60 mm)
EUV636	002022046036	(1.59mm)	(4.75mm)	(6.42mm)		(5.2mm)	(4.75mm)	(12.7mm)	36" (914.40 mm)
EUV824	002022048024	.125"	.187"	.312"	PVC Heat Shrink	.253"	.187"	.50"	24" (609.60 mm)
EUV836	002022048036	(3.18mm)	(4.75mm)	(7.92mm)		(6.42mm)	(4.75mm)	(12.7mm)	36" (914.40 mm)
EUV424	002022044024	.250"	.312"	.468"	PVC Heat Shrink	.422"	.312"	.50"	24" (609.60 mm)
EUV436	002022044036	(6.35mm)	(7.92mm)	(11.9mm)		(10.7mm)	(7.92mm)	(12.7mm)	36" (914.40 mm)
EUV460	002022044060								60" (1524.0 mm)



EXUV - Standard End Ferrule, Stainless Steel Sheathing, Rated for -40°F to 347°F

Model	Part #	A	B	C	D	E	F	G	L
EXUV824	002024018024	.125"	.187"		Metal Transition		.187"	.50"	24" (609.60 mm)
EXUV836	002024018036	(3.18mm)	(4.75mm)	-		-	(4.75mm)	(12.7mm)	36" (914.40 mm)
EXUV872	002024018072								72" (1828.8 mm)

Vision Light Tech B.V.

Protonenlaan 22, 5405 NE UDEN, P.O. Box 345, 5400 AH UDEN, The Netherlands

Phone: +31 (0)413 26 00 67, Fax +31 (0)413 26 09 38, E-mail: inquiry@vlt.nl, Website: www.vlt.nl

Trade register No. 17150044, VAT No. NL8112.30.946.B01