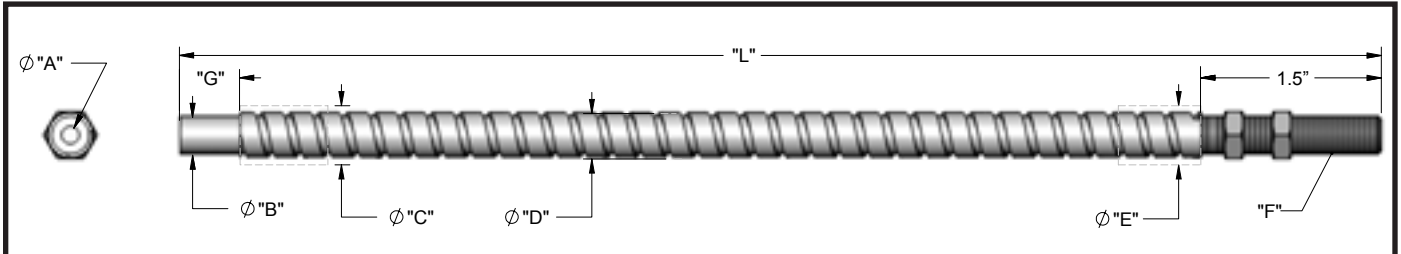


BT - Threaded End Ferrule, PVC Monocoil Sheathing, Rated for -40°F to 225°F

Model	Part #	A	B	C	L	Thread
BT636	002112106036	.063"	.187"	.190"	36" (914.40 mm)	5/16-24 UNF
BT672	002112106072	(1.60 mm)	(4.75 mm)	(4.83 mm)	72" (1828.80 mm)	
BT824	002112108024				24" (609.60 mm)	5/16-24 UNF
BT836	002112108036				36" (914.40 mm)	
BT848	002112108048	.125"	.187"	.230"	48" (1219.20 mm)	
BT872	002112108072	(3.18 mm)	(4.75 mm)	(5.84 mm)	72" (1828.80 mm)	
BT896	002112108096				96" (2438.40mm)	
BT8120	002112108120				120" (3048.01 mm)	
BT536	SK96830036	.156"	.187"	.268"	36" (914.40 mm)	5/16-24 UNF
BT548	SK96830048	(3.96 mm)	(4.75 mm)	(6.81 mm)	48" (1219.20 mm)	
BT572	SK96830072				72" (1828.80 mm)	
BT436	700002434036	.250"	.312"	.400	36" (914.40 mm)	1/2-20 UNF
BT448	700002434048	(6.35mm)	(7.92 mm)	(10.15mm)	48" (1219.20 mm)	
BT472	700002434072				72" (1828.80 mm)	



BXT - Threaded End Ferrule, Stainless Steel Sheathing, Rated for -40°F to 500°F

Model	Part #	A	B	C	L	Thread
BXT618	002114106018				18" (457.20 mm)	5/16-24 UNF
BXT624	002114106024				24" (609.60 mm)	
BXT636	002114106036	.063"	.187"	.203"	36" (914.40 mm)	
BXT648	002114106048	(1.60 mm)	(4.75 mm)	(5.16 mm)	48" (1219.20 mm)	
BXT672	002114106072				72" (1828.80 mm)	
BXT812	002114108012				12" (304.80 mm)	5/16-24 UNF
BXT824	002114108024				24" (609.60 mm)	
BXT836	002114108036				36" (914.40 mm)	
BXT848	002114108048	.125"	.187"	.244"	48" (1219.20 mm)	
BXT860	002114108060	(3.18 mm)	(4.75 mm)	(6.20 mm)	60" (1524.00 mm)	
BXT872	002114108072				72" (1828.80 mm)	
BXT896	002114108096				96" (2438.40mm)	
BXT8120	002114108120				120" (3048.01 mm)	
BXT536	002114105036	.156"	.187"	.306"	36" (914.40 mm)	5/16-24 UNF
		(3.96 mm)	(4.75 mm)	(7.77 mm)		
BXT436	SK83490036	.250"	.312"	.422"	36" (914.40 mm)	1/2-20 UNF
BXT448	SK83490048	(6.35mm)	(7.92 mm)	(10.7mm)	48" (1219.20 mm)	
BXT460	SK83490060				60" (1524.00 mm)	

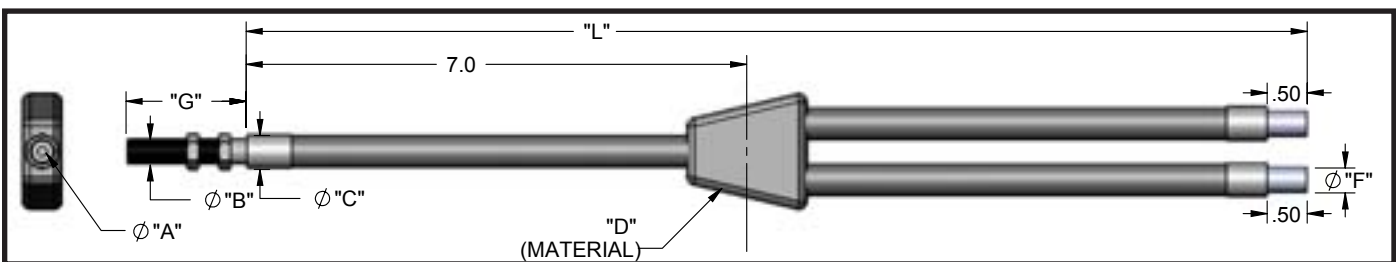


ET - Bifurcated Light Guide, Randomized, PVC Monocoil Sheathing, Threaded End, Rated for -40°F to 225°F

Model	Part #	A	B	C	D	E	F	G	L
ET624	002122106024	.063" (1.60 mm)	5/16-24 UNF	.312" (7.9 mm)	PVC Heat Shrink	.205" (5.2 mm)	.187" (4.75 mm)	1.50" (38 mm)	24" (609.6 mm) 36" (914.4 mm) 72" (1828.8 mm)
ET636	002122106036								
ET672	002122106072								
ET824	002122108024	.125" (3.18 mm)	5/16-24 UNF	.312" (7.9 mm)	PVC Heat Shrink	.250" (6.3 mm)	.187" (4.75 mm)	1.50" (38 mm)	24" (609.6 mm) 36" (914.4 mm) 48" (1219.2 mm) 72" (1828.8 mm)
ET836	002122108036								
ET848	002122108048								
ET872	002122108072								
ET536	002122105036	.156" (3.96 mm)	5/16-24 UNF	.312" (7.9 mm)	PVC Heat Shrink	.250" (6.3 mm)	.187" (4.75 mm)	1.50" (38 mm)	36" (914.4 mm) 72" (1828.8 mm)
ET572	002122105072								

EXT, EPXT - Bifurcated Light Guide, Randomized, Stainless Steel Sheathing, Threaded End

Model	Part #	A	B	C	D	E	F	G	L
EXT624	002124106024	.063" (1.60 mm)	5/16-24 UNF	.312" (7.9 mm)	Metal Transition	-	.187" (4.75 mm)	1.50" (38 mm)	24" (609.6 mm) 36" (914.4 mm) 72" (1828.8 mm)
EXT636	002124106036								
EXT672	002124106072								
EXT824	002124108024	.125" (3.18 mm)	5/16-24 UNF	.312" (7.9 mm)	Metal Transition	-	.187" (4.75 mm)	1.50" (38 mm)	24" (609.6 mm) 36" (914.4 mm) 48" (1219.2 mm) 72" (1828.8 mm)
EXT836	002124108036								
EXT848	002124108048								
EXT872	002124108072								
EPXT624	002124316024	.063" (1.60 mm)	5/16-24 UNF	.312" (7.9 mm)	PVC Heat Shrink	-	.187" (4.75 mm)	1.50" (38 mm)	24" (609.6 mm) 36" (914.4 mm)
EPXT636	002124316036								
EPXT824	002124318024	.125" (3.18 mm)	5/16-24 UNF	.312" (7.9 mm)	PVC Heat Shrink	-	.187" (4.75 mm)	1.50" (38 mm)	24" (609.6 mm) 36" (914.4 mm)
EPXT836	002124318036								



EET - Bifurcated Light Guide, Randomized, PVC Monocoil Sheathing, Threaded End, Rated for -40°F to 225°F

Model	Part #	A	B	C	D	E	F	G	L
EET648	002122386048	.063" (1.60 mm)	5/16-24 UNF	.312" (7.9 mm)	PVC Heat Shrink	.205" (5.2 mm)	.187" (4.75 mm)	1.50" (38 mm)	48" (1219.2 mm)
EET848	002122390048	.125" (3.18 mm)	5/16-24 UNF	.312" (7.9 mm)	PVC Heat Shrink	.250" (6.3 mm)	.187" (4.75 mm)	1.50" (38 mm)	48" (1219.2 mm)
EET548	002122370048	.156" (3.96 mm)	5/16-24 UNF	.312" (7.9 mm)	PVC Heat Shrink	.250" (6.3 mm)	.187" (4.75 mm)	1.50" (38 mm)	48" (1219.2 mm)

Vision Light Tech B.V.

Protonenlaan 22, 5405 NE UDEN, P.O. Box 345, 5400 AH UDEN, The Netherlands

Phone: +31 (0)413 26 00 67, Fax +31 (0)413 26 09 38, E-mail: inquiry@vlt.nl, Website: www.vlt.nl

Trade register No. 17150044, VAT No. NL8112.30.946.B01