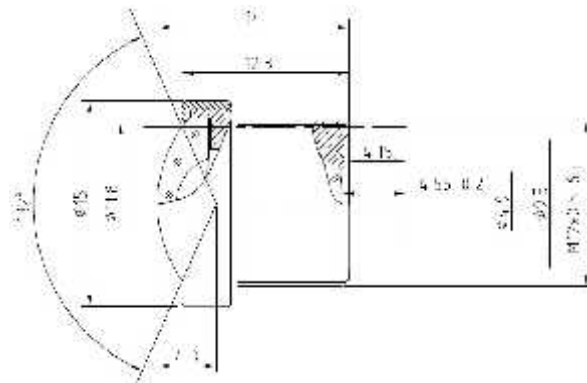


I



Focal Length:	2.4mm	
Sensor:	CCD/CMOS	
Image Size:	1/3"	
Mount:	M12x0.5-6g	
Aperture,F/# (FNo.):	F2.0	
Back Focal Length:	4.56 ± 0.2mm	
Iris:	Fixed	
(F.O.V.)(D/H/V):	132°/104°/77°	
M.O.D:	0.15m	
Effective Aperture:	11.8mm	Front
	4.9mm	Rear
Dimension:	15x12.3mm	
Lens construction:	6-5	
MTF:	MP	
Model:	ACM13B02420IRMM	