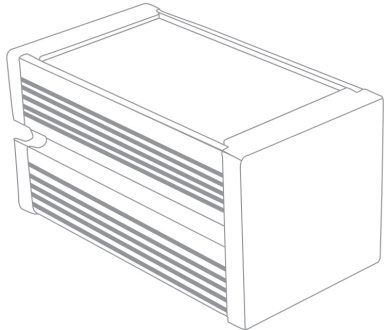


FLOOD TYPE BAR LIGHT

ELB SERIES



The ELB Series is a **high-power** flood type bar light designed around flexibility to answer the needs of many machine vision applications.

With the **flexibility** in mind, the ELB Series makes it possible to easily adjust the product, mechanically, optically and electronically speaking, to adapt to any application requirements. For instance, users can select the correct lens position for irradiation distance. The ELB Series is also shipped with three different diffuser plates, so that the uniformity can be adjusted to the needs of the user.

Furthermore, the **integrated controller** with **autostrobe** features allows for 300% increase intensity while being strobe when compared to continuous mode.

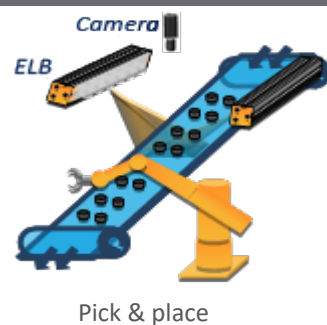
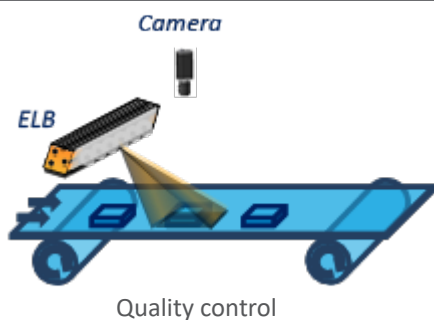
MAIN FEATURES

- Standard delivered as a package
- Very intense and uniform illuminated area
- Long lifetime and few maintenance
- Standard connections and fasteners
- Flexible: Adjustable illumination angles (4 angles) & different windows



Connector	M12 - 4 contacts or M12P - 4 contacts (depending on the length)
Power supply	24V DC
Illumination mode	Strobe or continuous mode
Electronical mode	Auto-strobe
Available wavelength	White, UV, Blue, Green, Red, IR
Available sizes	From 100mm to 1600mm
Width x height	51mm x 49mm
Fastener	One rail for M6 nut on the back and one rail for M6 T-nut on the side
Material	Device body: Aluminum alloy & ABS; Window: PMMA
Working temperature	0° to 50° C
IP code	IP50

APPLICATIONS



OPTICAL FLEXIBILITY

How to change the configuration of the ELB



1 Unscrew the M4 screws



2 Slide the window



3 Slide the block of LEDs

Window

The ELB Series is shipped with three different diffusers. Depending on what uniformity is needed for the application, the user can select and easily change to the diffuser that fulfills the application requirements.

Clear window (CW)

Semi-diffuse window (SD)

Diffuse window (DF)



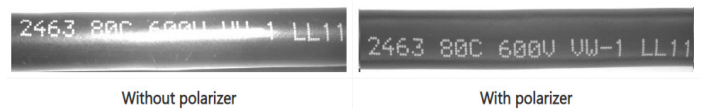
Lens Position

The ELB Series offers flexibility in its lens positioning, which can be easily adjusted to depending on the irradiation distance.

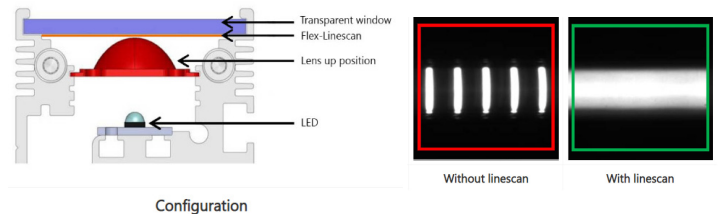


Optical options

With the polarizer for the ELB Series, it is possible to eliminate glare from your workpiece, making it easier to acquire a suitable image for your application.



The ELB Series also offers a linescan accessory, transforming the ELB Series into a line light useable as a either brightfield or darkfield illumination.

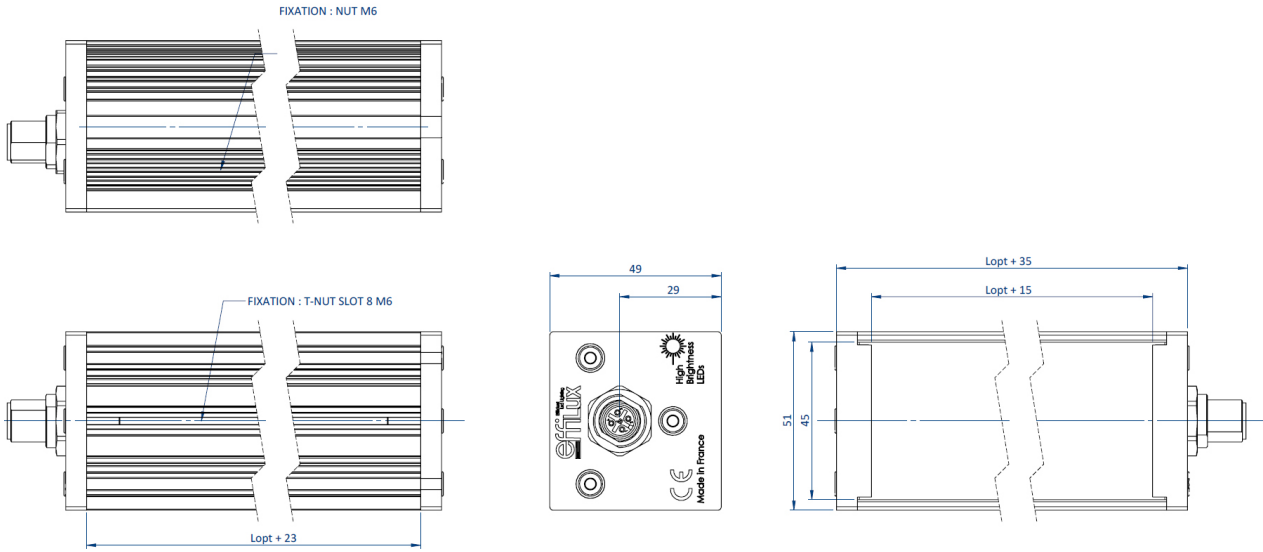


When the lens is position in P3, the polarizer and the linescan accessory cannot be used together. If necessary, a thinner polarizer is available.

The L2 version: ELB-L2

The ELB Series is also available with 1 led on every 2 positions, which is called the ELB-L2 Series. For further information, please contact your CCS representative.

DIMENSIONS (MM)



ELECTRONICAL SPECIFICATIONS

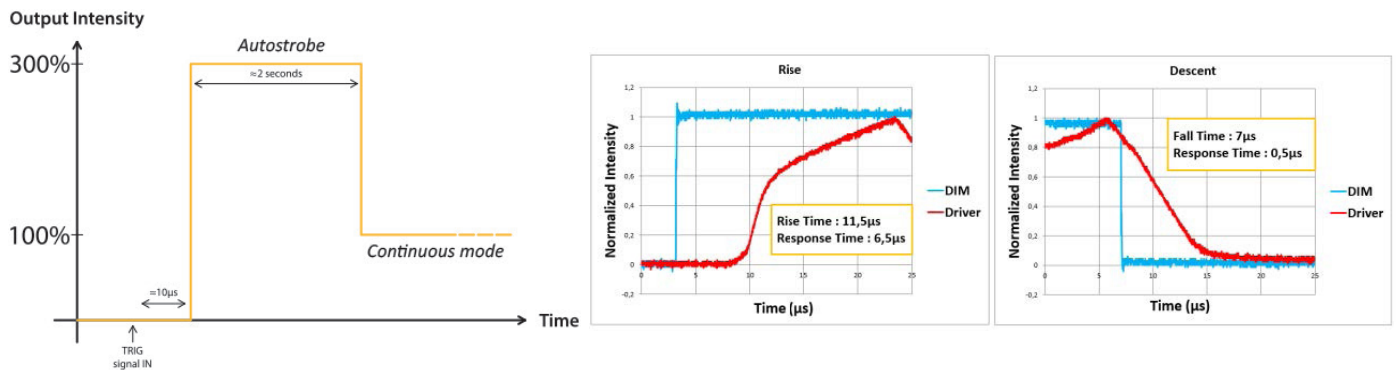


Contact arrangement

When using the ELB Series, please use a 24V DC. Please note that trigger pin needs to be connected when using the ELB Series

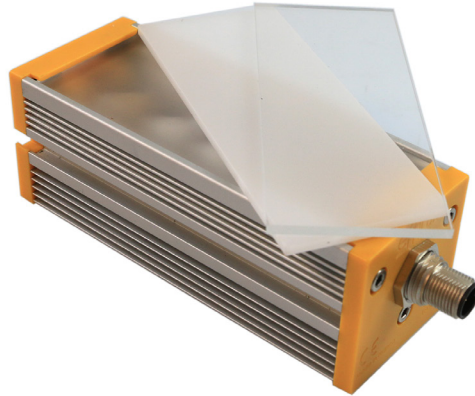
Contact arrangement	Number	Color Contact	Designation
<p>M12 male connector M12 Power male connector</p> <p><i>TYPE OF CONNECTOR DEPENDS ON THE LENGTH OF THE ELB</i></p>	1	Brown	+24V DC
	2	White	n.a.
	3	Blue	GND
	4	Black	PNP TRIGGER [trigger for rising edge] for Auto-strobe Light ON if $V_{PNP} > 3V$ DC max 24V DC - Analog Voltage

Autostrobe feature



PRODUCT LINE UP - PACKAGES

The ELB Series is standard delivered as a **package**: the product in the classic configuration (SD diffuser and the lens at P2 position) and the two other diffusers (DF and CW), allowing the users to select the correct diffuser for their application needs:



ELB : Standard version

Power consumption is given for white products.

Series	Part Number	Color	Wavelength / Color temperature	Power Consumption		Connector	Weight	Optical Length (L _{op})
				Strobe	Continuous			
ELB	ELB-100SW	White	5500 K ± 500 K	20W	8W	M12	400g	100mm
ELB	ELB-100UV	Ultraviolet	405nm					
ELB	ELB-100BL	Blue	465nm					
ELB	ELB-100GR	Green	525nm					
ELB	ELB-100RD	Red	625nm					
ELB	ELB-100IR	Infrared	850nm	40W	15W	M12	700g	200mm
ELB	ELB-200SW	White	5500 K ± 500 K					
ELB	ELB-200UV	Ultraviolet	405nm					
ELB	ELB-200BL	Blue	465nm					
ELB	ELB-200GR	Green	525nm					
ELB	ELB-200RD	Red	625nm	60W	20W	M12	1000g	300mm
ELB	ELB-200IR	Infrared	850nm					
ELB	ELB-300SW	White	5500 K ± 500 K					
ELB	ELB-300UV	Ultraviolet	405nm					
ELB	ELB-300BL	Blue	465nm					
ELB	ELB-300GR	Green	525nm	80W	30W	M12	1300g	400mm
ELB	ELB-300RD	Red	625nm					
ELB	ELB-300IR	Infrared	850nm					
ELB	ELB-400SW	White	5500 K ± 500 K					
ELB	ELB-400UV	Ultraviolet	405nm					
ELB	ELB-400BL	Blue	465nm	95W	35W	M12	1600g	500mm
ELB	ELB-400GR	Green	525nm					
ELB	ELB-400RD	Red	625nm					
ELB	ELB-400IR	Infrared	850nm					
ELB	ELB-500SW	White	5500 K ± 500 K					
ELB	ELB-500UV	Ultraviolet	405nm	115W	45W	M12	1900g	600mm
ELB	ELB-500BL	Blue	465nm					
ELB	ELB-500GR	Green	525nm					
ELB	ELB-500RD	Red	625nm					
ELB	ELB-500IR	Infrared	850nm					
ELB	ELB-600SW	White	5500 K ± 500 K	135W	50W	M12	2200g	700mm
ELB	ELB-600UV	Ultraviolet	405nm					
ELB	ELB-600BL	Blue	465nm					
ELB	ELB-600GR	Green	525nm					
ELB	ELB-600RD	Red	625nm					
ELB	ELB-600IR	Infrared	850nm	135W	50W	M12	2200g	700mm
ELB	ELB-700SW	White	5500 K ± 500 K					
ELB	ELB-700UV	Ultraviolet	405nm					
ELB	ELB-700BL	Blue	465nm					
ELB	ELB-700GR	Green	525nm					
ELB	ELB-700RD	Red	625nm					
ELB	ELB-700IR	Infrared	850nm					

Series	Part Number	Color	Wavelength / Color temperature	Power Consumption		Connector	Weight	Optical Length (L _{op})
				Strobe	Continuous			
ELB	ELB-800SW	White	5500 K ± 500 K	155W	55W	M12	2500g	800mm
ELB	ELB-800UV	Ultraviolet	405nm					
ELB	ELB-800BL	Blue	465nm					
ELB	ELB-800GR	Green	525nm					
ELB	ELB-800RD	Red	625nm					
ELB	ELB-800IR	Infrared	850nm	175W	60W	M12P	2800g	900mm
ELB	ELB-900SW	White	5500 K ± 500 K					
ELB	ELB-900UV	Ultraviolet	405nm					
ELB	ELB-900BL	Blue	465nm					
ELB	ELB-900GR	Green	525nm					
ELB	ELB-900RD	Red	625nm	190W	65W	M12P	3100g	1000mm
ELB	ELB-900IR	Infrared	850nm					
ELB	ELB-1000SW	White	5500 K ± 500 K					
ELB	ELB-1000UV	Ultraviolet	405nm					
ELB	ELB-1000BL	Blue	465nm					
ELB	ELB-1000GR	Green	525nm	210W	70W	M12P	3400g	1100mm
ELB	ELB-1000RD	Red	625nm					
ELB	ELB-1000IR	Infrared	850nm					
ELB	ELB-1100SW	White	5500 K ± 500 K					
ELB	ELB-1100UV	Ultraviolet	405nm					
ELB	ELB-1100BL	Blue	465nm	230W	75W	M12P	3700g	1200mm
ELB	ELB-1100GR	Green	525nm					
ELB	ELB-1100RD	Red	625nm					
ELB	ELB-1100IR	Infrared	850nm					
ELB	ELB-1200SW	White	5500 K ± 500 K					
ELB	ELB-1200UV	Ultraviolet	405nm	250W	85W	M12P	4000g	1300mm
ELB	ELB-1200BL	Blue	465nm					
ELB	ELB-1200GR	Green	525nm					
ELB	ELB-1200RD	Red	625nm					
ELB	ELB-1200IR	Infrared	850nm					
ELB	ELB-1300SW	White	5500 K ± 500 K	270W	90W	M12P	4300g	1400mm
ELB	ELB-1300UV	Ultraviolet	405nm					
ELB	ELB-1300BL	Blue	465nm					
ELB	ELB-1300GR	Green	525nm					
ELB	ELB-1300RD	Red	625nm					
ELB	ELB-1300IR	Infrared	850nm	290W	95W	M12P	4600g	1500mm
ELB	ELB-1400SW	White	5500 K ± 500 K					
ELB	ELB-1400UV	Ultraviolet	405nm					
ELB	ELB-1400BL	Blue	465nm					
ELB	ELB-1400GR	Green	525nm					
ELB	ELB-1400RD	Red	625nm	310W	100W	M12P	4900g	1600mm
ELB	ELB-1400IR	Infrared	850nm					
ELB	ELB-1500SW	White	5500 K ± 500 K					
ELB	ELB-1500UV	Ultraviolet	405nm					
ELB	ELB-1500BL	Blue	465nm					
ELB	ELB-1500GR	Green	525nm	310W	100W	M12P	4900g	1600mm
ELB	ELB-1500RD	Red	625nm					
ELB	ELB-1500IR	Infrared	850nm					
ELB	ELB-1600SW	White	5500 K ± 500 K					
ELB	ELB-1600UV	Ultraviolet	405nm					
ELB	ELB-1600BL	Blue	465nm	310W	100W	M12P	4900g	1600mm
ELB	ELB-1600GR	Green	525nm					
ELB	ELB-1600RD	Red	625nm					
ELB	ELB-1600IR	Infrared	850nm					

ELB-L2 : 1 LED on 2 positions version

Power consumption is given for white products.

Series	Part Number	Color	Wavelength / Color temperature	Power Consumption		Connector	Weight	Optical Length (L _{op})
				Strobe	Continuous			
ELB-L2	ELB-L2-200SW	White	5500 K ± 500 K	20W	8W	M12	700g	200mm
ELB-L2	ELB-L2-200UV	Ultraviolet	405nm					
ELB-L2	ELB-L2-200BL	Blue	465nm					
ELB-L2	ELB-L2-200GR	Green	525nm					
ELB-L2	ELB-L2-200RD	Red	625nm					
ELB-L2	ELB-L2-200IR	Infrared	850nm	20W	8W	M12	700g	200mm

Series	Part Number	Color	Wavelength / Color temperature	Power Consumption		Connector	Weight	Optical Length (L _{op})
				Strobe	Continuous			
ELB-L2	ELB-L2-400SW	White	5500 K ± 500 K	40W	15W	M12	1300g	400mm
ELB-L2	ELB-L2-400UV	Ultraviolet	405nm					
ELB-L2	ELB-L2-400BL	Blue	465nm					
ELB-L2	ELB-L2-400GR	Green	525nm					
ELB-L2	ELB-L2-400RD	Red	625nm					
ELB-L2	ELB-L2-400IR	Infrared	850nm					
ELB-L2	ELB-L2-600SW	White	5500 K ± 500 K	60W	20W	M12	1900g	600mm
ELB-L2	ELB-L2-600UV	Ultraviolet	405nm					
ELB-L2	ELB-L2-600BL	Blue	465nm					
ELB-L2	ELB-L2-600GR	Green	525nm					
ELB-L2	ELB-L2-600RD	Red	625nm					
ELB-L2	ELB-L2-600IR	Infrared	850nm					
ELB-L2	ELB-L2-800SW	White	5500 K ± 500 K	80W	30W	M12	2500g	800mm
ELB-L2	ELB-L2-800UV	Ultraviolet	405nm					
ELB-L2	ELB-L2-800BL	Blue	465nm					
ELB-L2	ELB-L2-800GR	Green	525nm					
ELB-L2	ELB-L2-800RD	Red	625nm					
ELB-L2	ELB-L2-800IR	Infrared	850nm					
ELB-L2	ELB-L2-1000SW	White	5500 K ± 500 K	95W	35W	M12	3100g	1000mm
ELB-L2	ELB-L2-1000UV	Ultraviolet	405nm					
ELB-L2	ELB-L2-1000BL	Blue	465nm					
ELB-L2	ELB-L2-1000GR	Green	525nm					
ELB-L2	ELB-L2-1000RD	Red	625nm					
ELB-L2	ELB-L2-1000IR	Infrared	850nm					
ELB-L2	ELB-L2-1200SW	White	5500 K ± 500 K	115W	45W	M12	3700g	1200mm
ELB-L2	ELB-L2-1200UV	Ultraviolet	405nm					
ELB-L2	ELB-L2-1200BL	Blue	465nm					
ELB-L2	ELB-L2-1200GR	Green	525nm					
ELB-L2	ELB-L2-1200RD	Red	625nm					
ELB-L2	ELB-L2-1200IR	Infrared	850nm					
ELB-L2	ELB-L2-1400SW	White	5500 K ± 500 K	135W	50W	M12	4300g	1400mm
ELB-L2	ELB-L2-1400UV	Ultraviolet	405nm					
ELB-L2	ELB-L2-1400BL	Blue	465nm					
ELB-L2	ELB-L2-1400GR	Green	525nm					
ELB-L2	ELB-L2-1400RD	Red	625nm					
ELB-L2	ELB-L2-1400IR	Infrared	850nm					
ELB-L2	ELB-L2-1600SW	White	5500 K ± 500 K	155W	55W	M12	4900g	1600mm
ELB-L2	ELB-L2-1600UV	Ultraviolet	405nm					
ELB-L2	ELB-L2-1600BL	Blue	465nm					
ELB-L2	ELB-L2-1600GR	Green	525nm					
ELB-L2	ELB-L2-1600RD	Red	625nm					
ELB-L2	ELB-L2-1600IR	Infrared	850nm					

OPTICAL ACCESSORIES

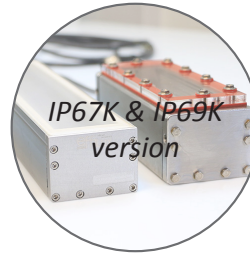
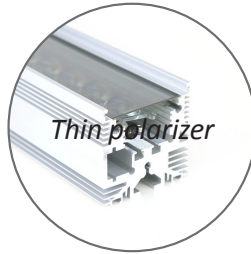
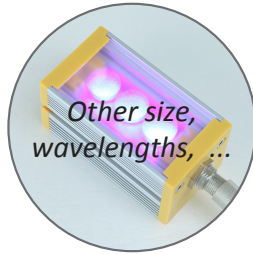
Polarizer	
Part Number	Applicable LED Unit
PL-ELB-100	ELB-100 / ELFB-100
PL-ELB-200	ELB-200 / ELB-L2-200 / ELFB-200
PL-ELB-300	ELB-300 / ELFB-300
PL-ELB-400	ELB-400 / ELB-L2-400 / ELFB-400
PL-ELB-500	ELB-500 / ELFB-500
PL-ELB-600	ELB-600 / ELB-L2-600 / ELFB-600
PL-ELB-700	ELB-700 / ELFB-700
PL-ELB-800	ELB-800 / ELB-L2-800 / ELFB-800
PL-ELB-900	ELB-900 / ELFB-900
PL-ELB-1000	ELB-1000 / ELB-L2-1000 / ELFB-1000
PL-ELB-1100	ELB-1100 / ELFB-1100
PL-ELB-1200	ELB-1200 / ELB-L2-1200 / ELFB-1200
PL-ELB-1300	ELB-1300 / ELFB-1300
PL-ELB-1400	ELB-1400 / ELB-L2-1400 / ELFB-1400
PL-ELB-1500	ELB-1500 / ELFB-1500
PL-ELB-1600	ELB-1600 / ELB-L2-1600 / ELFB-1600

Linescan (linear lighting or darkfield lighting)	
Part Number	Applicable LED Unit
LS-ELB-100	ELB-100
LS-ELB-200	ELB-200 / ELB-L2-200
LS-ELB-300	ELB-300
LS-ELB-400	ELB-400 / ELB-L2-400
LS-ELB-500	ELB-500
LS-ELB-600	ELB-600 / ELB-L2-600
LS-ELB-700	ELB-700
LS-ELB-800	ELB-800 / ELB-L2-800
LS-ELB-900	ELB-900
LS-ELB-1000	ELB-1000 / ELB-L2-1000
LS-ELB-1100	ELB-1100
LS-ELB-1200	ELB-1200 / ELB-L2-1200
LS-ELB-1300	ELB-1300
LS-ELB-1400	ELB-1400 / ELB-L2-1400
LS-ELB-1500	ELB-1500
LS-ELB-1600	ELB-1600 / ELB-L2-1600

For cables cf. the datasheet of the ECB cables series.
 For fasteners cf. the datasheet of the BK fasteners series.

CUSTOM - ON REQUEST

OPTIONS AVAILABLE ON REQUEST



EXAMPLE OF CUSTOM



EU DIRECTIVE



In accordance with EU machinery directive, EMC directive, and low voltage directive, machines and electronic devices not marked with the CE logo are subject to distribution restrictions within the EU. All EL Series products. These products will maintain the EU mandate compatibility of our customers' machinery and electronic devices.

ROHS DIRECTIVE

All products from the EL Series comply with the RoHS Directive.

MICRO WEBSITE

www.el-series.com