

NEW



PSB4-60024-2-PEI
600W / 2 Channels

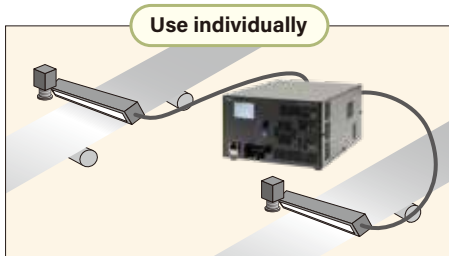
Constant-Voltage Analog Control Unit

PSB4-60024-2-PEI

2 in 1 (2 x PSB4-30024-PEI in 1)

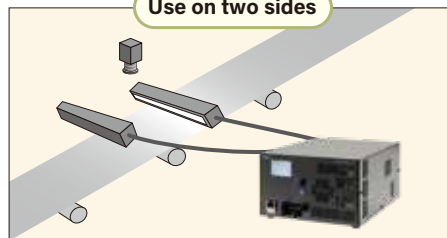
Equipped with 2 channels. Independent operation possible

Multiple lights can be individually controlled with just the 1 power source!



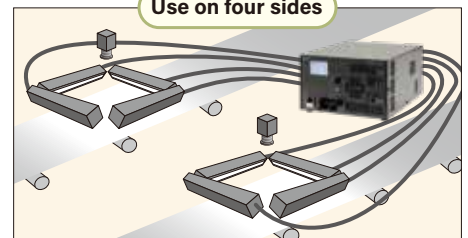
Use individually

Individually control lights for each inspection line



Use on two sides

Can be dimmed individually to adjust variations in brightness

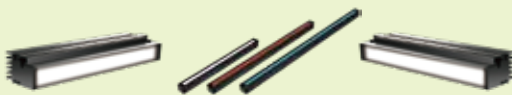


Use on four sides

Surround from four directions for individual line light control

Up to 300W per channel, for 600W total of connected lights. Lights from our wide lineup can be connected

Line sensor lights



LNSP2 series

LNSD series

LNIS series

Flat lights



Long type

Large type

Hole type

Lights from our wide lineup can be connected

Various light models can be connected, such as line sensor lights and area sensor lights. Contact our local sales office for details.

Uses an LCD display for improved visibility



Displays the set value, unit status, operating menu, etc.

Uses an operating knob for intuitive operation



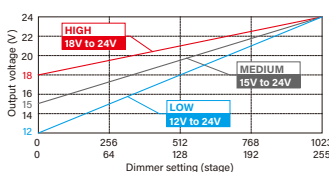
Simple "turn", "press", "push" and "hold" operations

Dimmer value can be set to 256 or 1,024 levels



Dimmer level can only be selected for manual control or parallel communication. EtherNet communications enables 1,024 levels.

Dimmer range can be switched between 3 levels



Select based on lighting characteristics or to suit the application

Equipped with a metal connector and EL connector

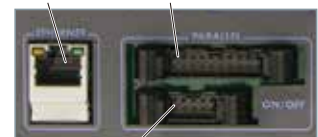
EL connector Metal connector EL connector Metal connector



Various lights can be connected

External control via EtherNet/parallel communication

LAN connector Parallel communication connector



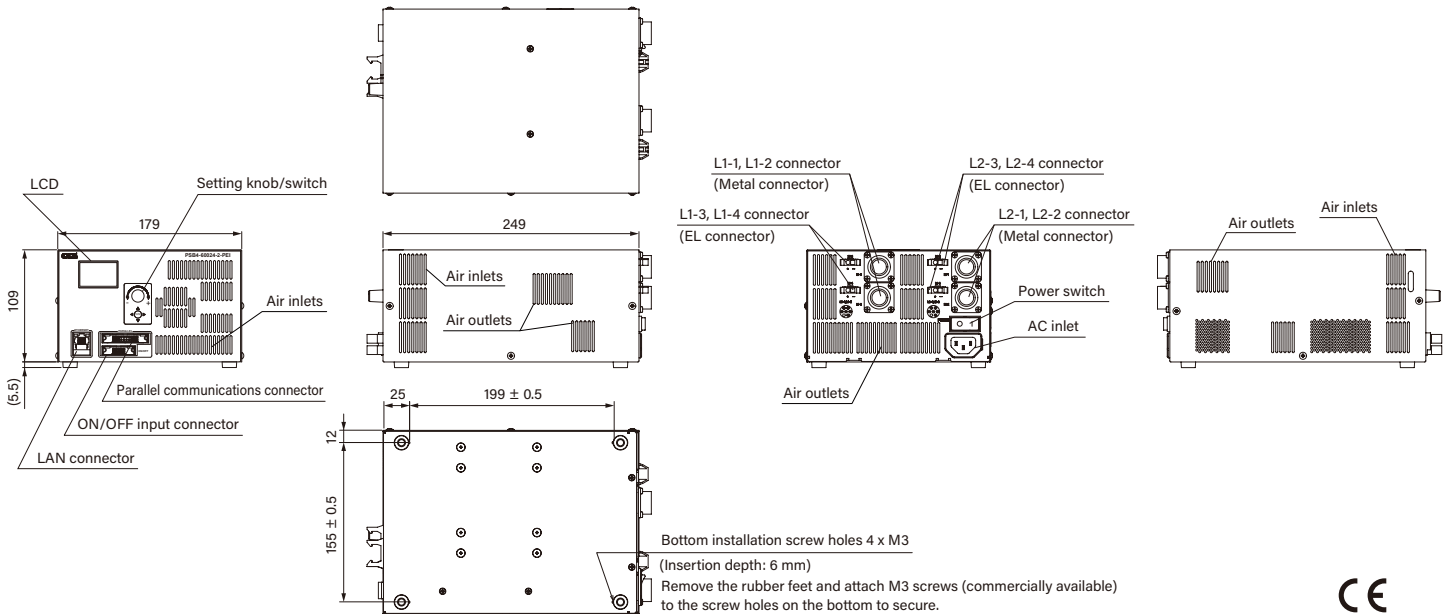
ON/OFF input connector

Specifications

Model name	PSB4-60024-2-PEI	
Lighting method	Continuous lighting	
Drive method	Constant-voltage system	
Intensity control method	Variable-voltage control	
Number of channels	2 channels (L1, L2)	
Applicable Light Units (rating)	Metal connector (L1-1, L1-2/L2-1, L2-2): 24V 300W (1 connector 300W or less) EL connector (L1-3, L1-4/L2-3, L2-4): 24V 300W (1 connector 150W or less) All L1 connectors total: 300W or less (same as L2 connectors)	
Intensity control	Manual	Operation on the front panel, 256 or 1,024 levels
	External	Command input via TCP/IP or UDP/IP communications Signal input through parallel port
ON/OFF control	External	Command input via TCP/IP or UDP/IP communications Signal input through parallel port
	Input power	100 to 240 VAC (+10%, -15%), 50/60 Hz
Output current (rating)	12.5A/channel, 2 channels total: 25A	

Power consumption (typ.)	765 VA
Inrush current (typ.)	55A/95A (primary/secondary value, at 100 VAC), 132A/132A (primary/secondary value, at 240 VAC) during cold start
Frequency	50/60 Hz
Ground leakage current	3.5 mA max. (264 VAC, 60 Hz, with no load)
Insulation withstand voltage (input-output, input-FG)	1500 VAC for one minute, Cutoff current: 20 mA, 500 VDC, 20 MΩ min.
Operating environment	Temperature: 0 to 40°C, Humidity: 20% to 85% (with no condensation)
Storage environment	Temperature: -20 to 60°C, Humidity: 20% to 85% (with no condensation)
Cooling method	Forced air cooling
CE marking	Low voltage directive (LVD) 2014/35/EU, Standard EN61010-1 EMC directive 2014/30/EU, Standard EN61000-6-2, EN61000-6-4 RoHS directive 2011/65/EU, Standard EN50581
Environmental regulations	RoHS compliant
Material, coating, and surface processing	Steel sheet, Cover thickness: 1.0 mm, Chassis thickness: 1.6 mm, N3 (leather tone)
Weight	4,100 g max.
Accessories	Instruction guide, 2-m-long 3-prong AC power cord with ground terminal

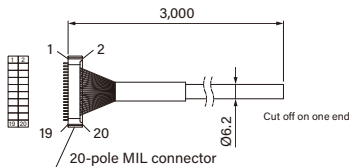
Dimensions (mm)



Optional Accessories (mm) Optional items are the same as for PSB4-30024-PEI.

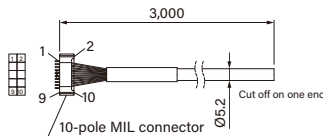
Parallel Communications Cable

Model name: **EXCB2-M20-3**



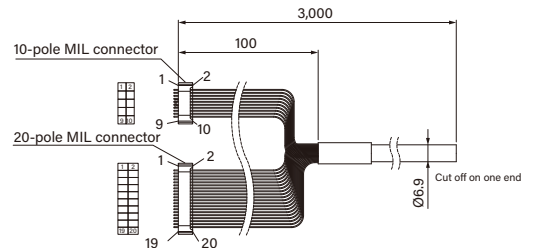
ON/OFF Input Cable

Model name: **EXCB2-M10-3**



Parallel Communications and ON/OFF Input Branch Cable

Model name: **EXCB2-M10M20-3**



● CCS, "LIGHTING SOLUTION", and "PSB" are registered trademarks or trademarks of CCS Inc.

Notes

● To ensure proper and safe use of the product, please read the Instruction Guide completely before using the product. ● The design and specifications of this product are subject to change without notification for product improvement.

CCS Inc.
CREATING CUSTOMER SATISFACTION

Headquarters (Kyoto, Japan)
TEL: +81-75-415-8284, FAX: +81-75-415-8316
E-mail: sales@ccs-inc.co.jp
https://www.ccs-grp.com/

CCS Asia PTE. LTD. (Singapore)
TEL: +65-6363-1180, FAX: +65-6363-1236
Email: sales@ccs-asia.com.sg
https://www.ccs-asia.com.sg/

CCS China Inc. (Shenzhen)
TEL: +86-755-8279-0477, FAX: +86-755-8279-0478
Email: ccschina@ccs-inc.co.jp
https://www.ccs-inc.cn/

CCS America, Inc. (USA)
TEL: +1-781-272-6900, FAX: +1-781-272-6902
Email: info@ccsamerica.com
https://www.ccsamerica.com/

CCS MV (Thailand) Co., Ltd.
TEL: +66-(0)2-779-1051, FAX: +66-(0)2-779-1054
Email: sales@ccs-asia.com.sg
https://www.ccs-asia.com.sg/

Taiwan Office
TEL: +886-2-2581-7676, FAX: +886-2-2581-7662
Email: taiwan-tr@ccs-inc.co.jp

CCS Europe N. V. (Belgium)
TEL: +32-(0)2-333-0080, FAX: +32-(0)2-333-0081
Email: info@ccseu.com

CCS MV (Malaysia) Sdn. Bhd.
TEL: +604-611-6656
Email: sales-msia@ccs-asia.com.sg
https://www.ccs-asia.com.sg/

KOREA Testing Room
Email: ccskorea@ccs-inc.co.jp

For information on your nearest CCS office, refer to our website.
https://www.ccs-grp.com/office/

